



Sublease Available

299 Cherry Hill Road
Parsippany, NJ

Space Profile

Premises	1st Floor
RSF	4,084 RSF
Rental Rate	Negotiable
Availability	Immediate
Term	8.5 years
Building Class	B
Submarket	Parsippany
Built	1977
Parking	3.50/1000

Map



Features

- 24 hour availability with on-site management
- Separate entrance
- One of the most recognized buildings in Parsippany
- Less than 2 miles to Mountain Lakes Commuter Rail

For More Information

Cresa
201 Route 17 North
Suite 305
Rutherford, NJ 07070
cresa.com/newjersey



Jonathan Marks
845.558.4575
jmarks@cresa.com

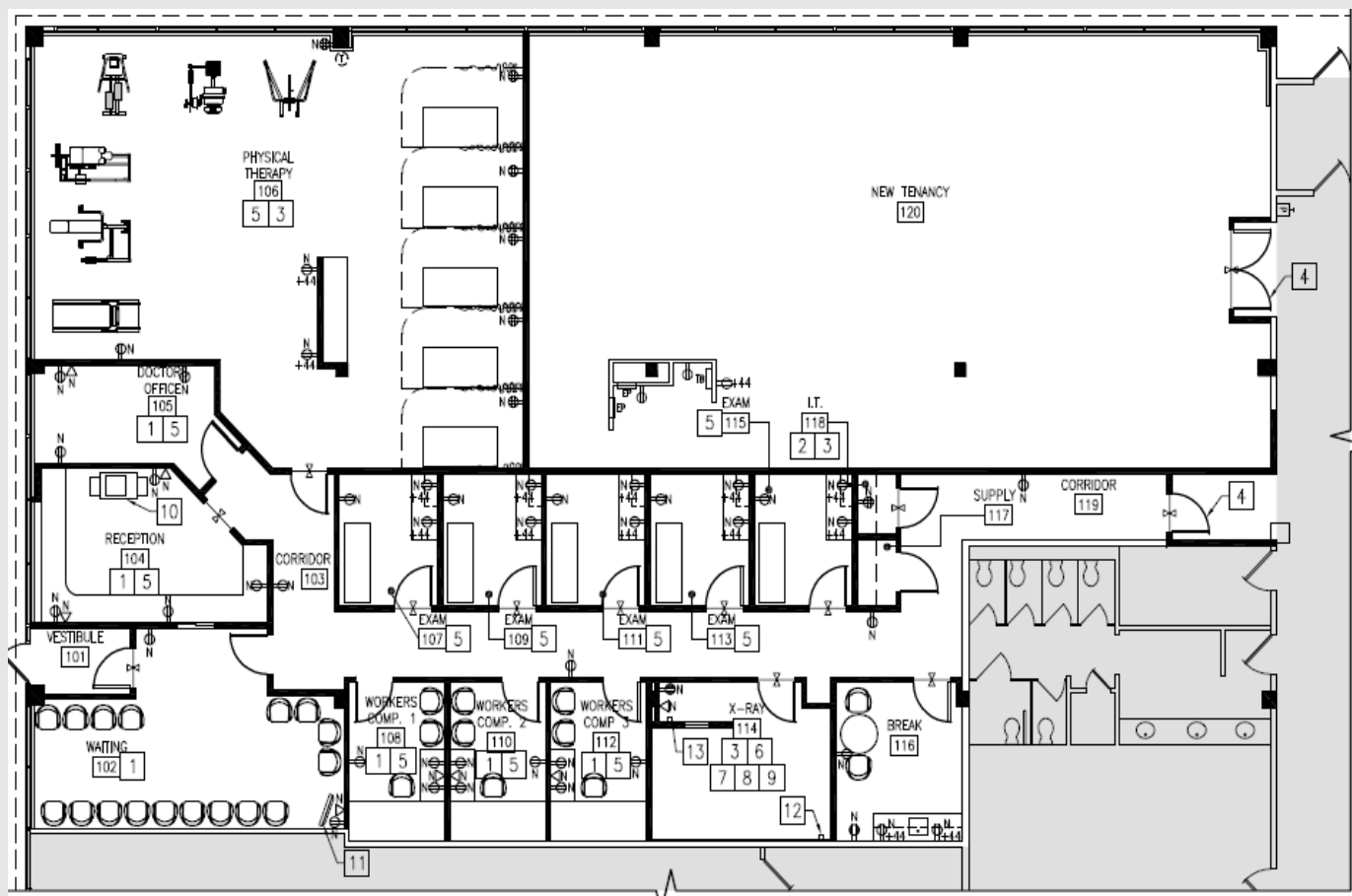


Dennis Gralla
201.960.1164
dgralla@cresa.com



299 Cherry Hill Road
Parsippany, NJ

1st Floor - 4,084 SF



For More Information

Cresa
201 Route 17 North
Suite 305
Rutherford, NJ 07070
cresa.com/newjersey



Jonathan Marks
845.558.4575
jmarks@cresa.com



Dennis Gralla
201.960.1164
dgralla@cresa.com



299 Cherry Hill Road
Parsippany, NJ

Interior Photos

