



Sublease Available

Trellis at Amberglen
Cascade One
1915 NE Stucki Ave
Hillsboro, OR 97006

Space Profile

Premises	Suite 105
RSF	3,759
Rate	\$13.00/SF FSG
Availability	Immediate
Term	April 30, 2021
Furniture	Negotiable
Building Type	Class A Office
Submarket	Sunset Corridor/Hillsboro
Built	2001
Parking	4/1000

Map



Features

- Award-winning landscaping and convenient parking
- High visibility from Cornell Road in the heart of the Sunset Corridor
- Located just 20 minutes from downtown Portland
- High quality improvements and convenient access to services
- Ground floor access and office window line
- Plug and Play short term solution
- Abundant parking available
- New ownership with high-end building renovations underway

For More Information

Cresa Portland
1355 NE Everett St
Suite 100
Portland, OR 97209
www.cresa.com/portland

Mike Whitten
503.886.8683
mwhitten@cresa.com

Kelsey Schneider
503.987.0039
kschneider@cresa.com

Even though obtained from sources deemed reliable, no warranty or representation, express or implied, is made as to the accuracy of the information herein, and it is subject to errors, omissions, change of price, rental or other conditions, withdrawal without notice, and to any special listing conditions imposed by our principals.

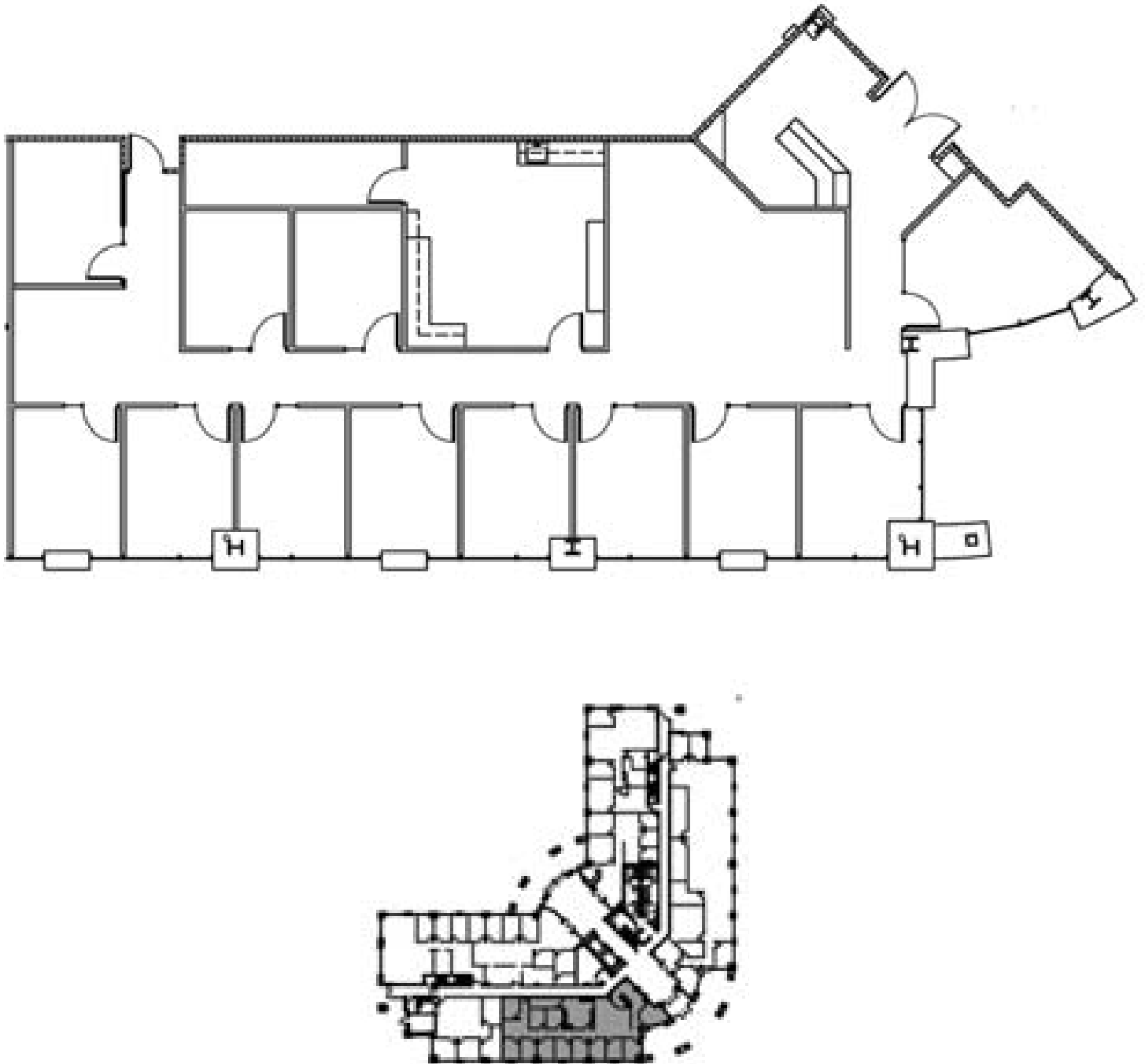
cresa

Sublease Available

Trellis at Amberglen
Cascade One
1915 NE Stucki Ave
Hillsboro, OR 97006

Floor Plan

1st Floor - 3,759 SF



Sublease Available

Trellis at Amberglen
Cascade One
1915 NE Stucki Ave
Hillsboro, OR 97006

1st Floor - 3,759 SF



Interior Photos



Even though obtained from sources deemed reliable, no warranty or representation, express or implied, is made as to the accuracy of the information herein, and it is subject to errors, omissions, change of price, rental or other conditions, withdrawal without notice, and to any special listing conditions imposed by our principals.

cresa

Sublease Available

Trellis at Amberglen
Cascade One
1915 NE Stucki Ave
Hillsboro, OR 97006

1st Floor - 3,759 SF



For More Information



Cresa Portland
1355 NW Everett St
Suite 100
Portland, OR 97209
www.cresa.com/portland

Mike Whitten
503.886.8683
mwhitten@cresa.com

Kelsey Schneider
503.987.0039
kschneider@cresa.com

Even though obtained from sources deemed reliable, no warranty or representation, express or implied, is made as to the accuracy of the information herein, and it is subject to errors, omissions, change of price, rental or other conditions, withdrawal without notice, and to any special listing conditions imposed by our principals.

cresa 