



Lloyd District Sublease Available

1448 NE Weidler St
Portland, OR 97232



For More Information

Cresa
1355 NW Everett St
Suite 100
Portland, OR 97209
cresa.com/portland

Mike Whitten
503.886.8683
mwhitten@cresa.com

Kelsey Schneider
503.987.0039
kschneider@cresa.com

Even though obtained from sources deemed reliable, no warranty or representation, express or implied, is made as to the accuracy of the information herein, and it is subject to errors, omissions, change of price, rental or other conditions, withdrawal without notice, and to any special listing conditions imposed by our principals.

cresa



LLOYD DISTRICT SUBLEASE AVAILABLE

Premises- 3,419 SF

1448 NE Weidler St.
Portland, OR 97232

Space Profile

Ground Floor Retail:	3,419 SF
Asking Rent:	\$30.00/NNN
Possession:	30-60 Days
Term:	Through 6/30/2020
Electric:	Direct Meter

Features

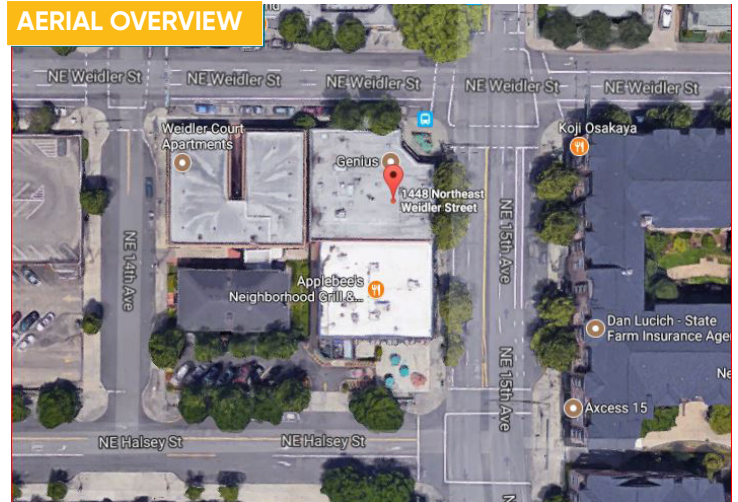
- Extensive frontage on the corner of NE 15th Ave and NE Weidler St
- Building signage
- Well-kept building built in 1996
- Easy access to I-5 & I-84

Location Highlights

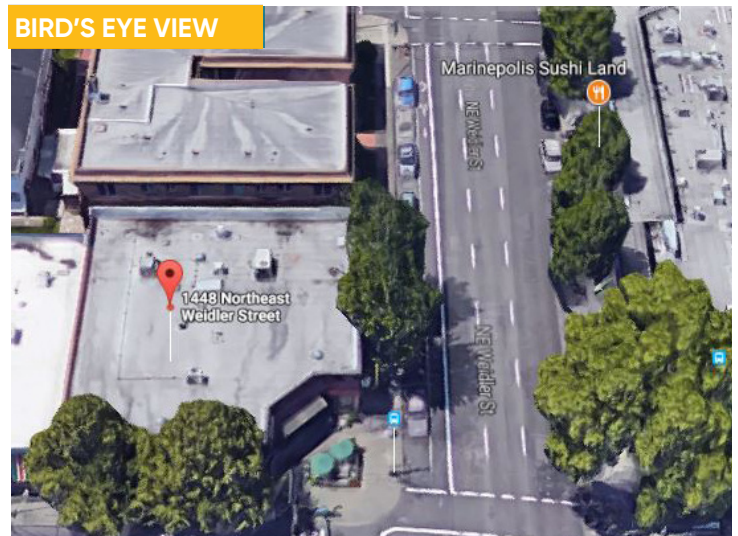
- Prime Lloyd District location
- Walking Score: 94
- Transit Score: 75
- Biking Score: 100 ("Biker's paradise")

Source: <https://www.walkscore.com/score/1448-ne-weidler-st-portland-or-97232>

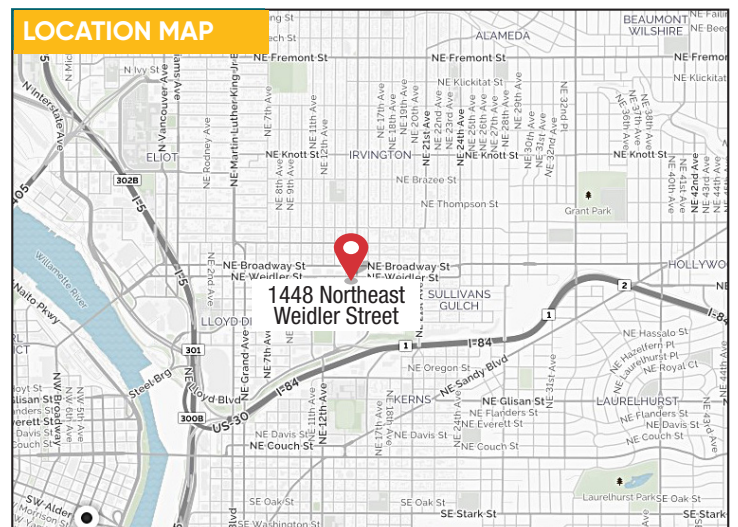
AERIAL OVERVIEW



BIRD'S EYE VIEW



LOCATION MAP





LLOYD DISTRICT SUBLEASE AVAILABLE

Premises- 3,419 SF

WORKROOM



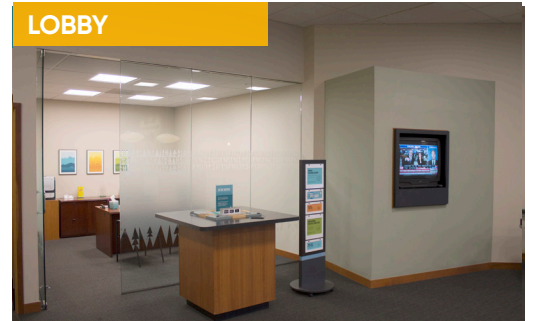
LOBBY



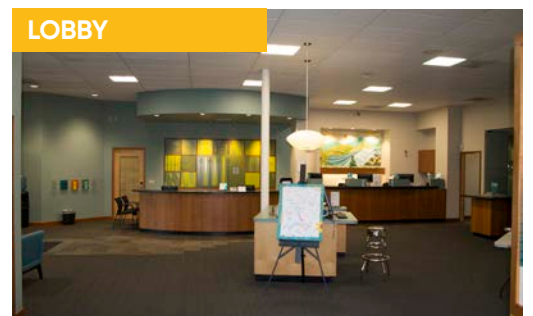
WAITING AREA



LOBBY



LOBBY

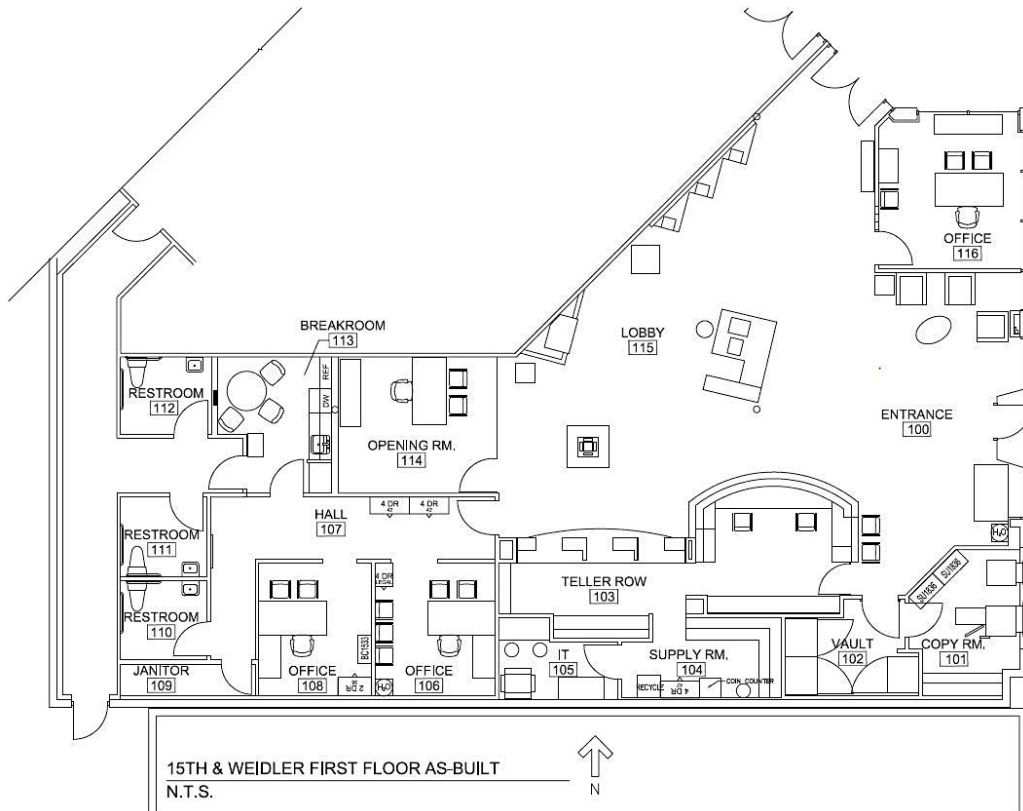




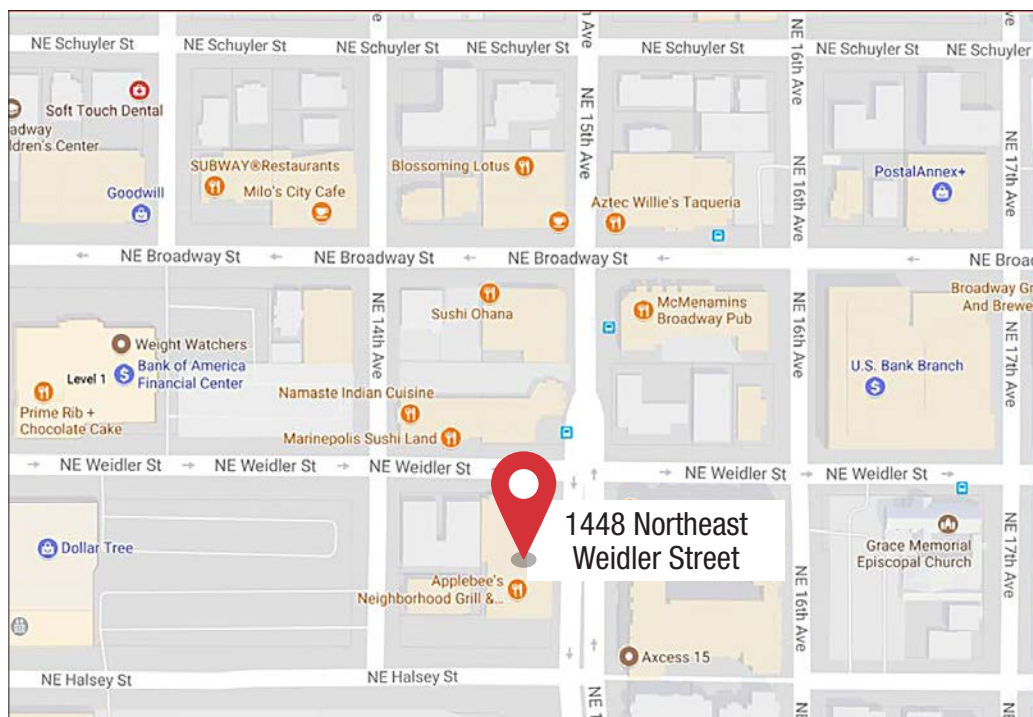
LLOYD DISTRICT SUBLEASE AVAILABLE

FLOOR PLAN

Premises- 3,419 SF



SURROUNDING AMENITIES





LLOYD DISTRICT SUBLEASE AVAILABLE

Premises- 3,419 SF



For More Information

Cresa
1355 NW Everett St
Suite 100
Portland, OR 97209
cresa.com/portland

Mike Whitten
503.886.8683
mwhitten@cresa.com

Kelsey Schneider
503.987.0039
kschneider@cresa.com

Even though obtained from sources deemed reliable, no warranty or representation, express or implied, is made as to the accuracy of the information herein, and it is subject to errors, omissions, change of price, rental or other conditions, withdrawal without notice, and to any special listing conditions imposed by our principals.

