

# Office Sublease Available

Electric Building  
621 SW Alder St.  
Portland, OR 97205

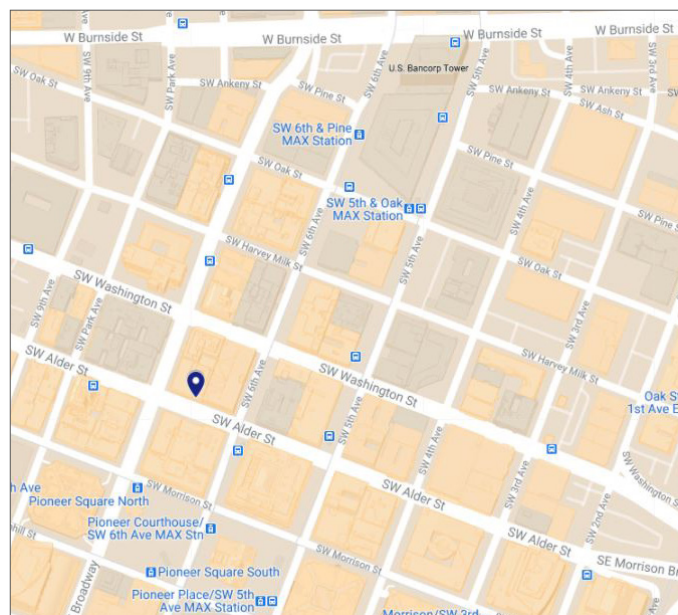
## Space Profile

<b>Premises</b>	Suite 310
<b>RSF</b>	3,007
<b>Rate</b>	\$17.50/ SF Full Service
<b>Availability</b>	Now
<b>Built</b>	1909, Renovated in 1996

## Features

- Plug N' Play sublease
- Built-in OHM A/V conferencing system capabilities (+\$3,500 value)
- Unique artistic office divider
- 4 private offices, open work space, kitchenette, open conference room
- Electric lounge on ground floor (meeting rooms, gym, showers)
- 1 block from Pioneer Square
- On-site property management
- ADA restroom directly across the hall

## Map



## For More Information

**Cresa Portland**  
1355 NE Everett St  
Suite 100  
Portland, OR 97209  
[www.cresa.com/portland](http://www.cresa.com/portland)

**Kelsey Machuca**  
503.679.2419  
[kmachuca@cresa.com](mailto:kmachuca@cresa.com)



**100** Walk Score



**97** Bike Score



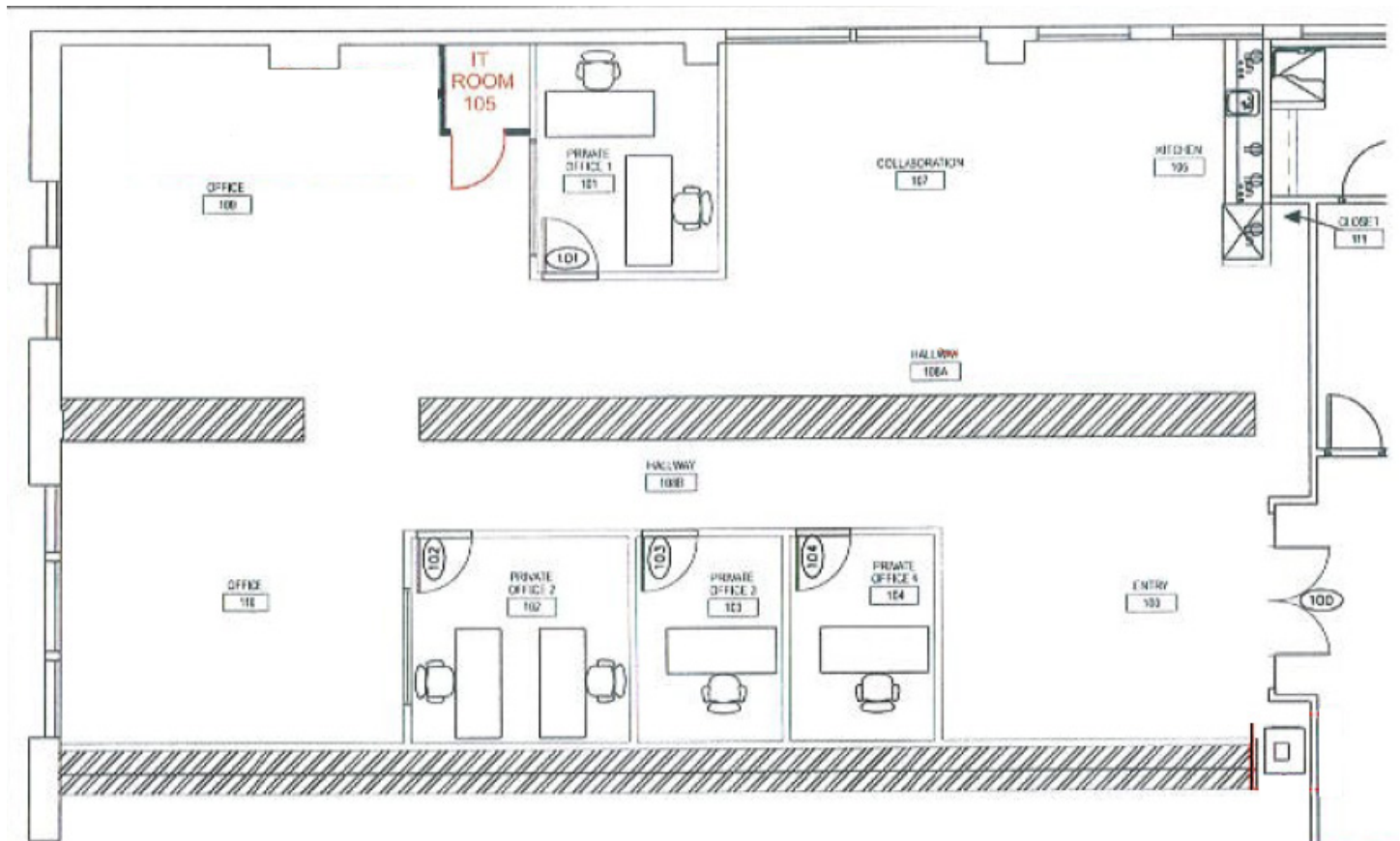
**97** Transit Score

# Office Sublease Available

Electric Building  
621 SW Alder St.  
Portland, OR 97205

Floor Plan

3,007 RSF





# Office Sublease Available

Electric Building  
621 SW Alder St.  
Portland, OR 97205

3,007 RSF

Break room



Private office



Conference room



Even though obtained from sources deemed reliable, no warranty or representation, express or implied, is made as to the accuracy of the information herein, and it is subject to errors, omissions, change of price, rental or other conditions, withdrawal without notice, and to any special listing conditions imposed by our principals.

cresa



# Office Sublease Available

Electric Building  
621 SW Alder St.  
Portland, OR 97205

**3,007 RSF**

**Work space**



**Kitchen /break room**



## For More Information

**Cresa Portland**  
1355 NW Everett St  
Suite 100  
Portland, OR 97209  
[www.cresa.com/portland](http://www.cresa.com/portland)

**Kelsey Machuca**  
503.679.2419  
[kmachuca@cresa.com](mailto:kmachuca@cresa.com)