



Class A Industrial Sublease

Summit Portal Way Building

19018 NE Portal Way

Gresham, OR 97230

Overview

Available Premises	90,894 SF Total (15,233 Office SF)
Rental Rate	\$0.70 per Sq Ft (Approx. \$63,626 Month)
Term	Thru Feb 2028
Clear Height	26' min
Sprinklers	ESPR – High Density
Dock Loading	12 current, ability to expand to 20
Grade Loading	4 grade level doors (12'x14')
Lighting	Motion-sensing T5HO high efficiency fluorescent
Parking	123 parking stalls

Space Specs

- Warehouse is fully climate controlled, two 40 ton HVAC units installed in 2020
 - Warehouse is fully insulated
 - Large open warehouse breakroom and locker room for employees (4,320 SF)
- New LED lighting throughout warehouse, including custom zones and timing controls.
- Racking and air compressor lines available to subtenant
- Dedicated server room with HVAC
- Current build-out completed in 2020



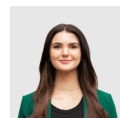
For more information:



Sean Heaton
503.320.1961
sheaton@cresa.com



Sean Connors
503.886.8689
sconnors@cresa.com



Hayley Mueller
503.341.9034
hmueller@cresa.com



Isaiah Johnson
503.347.1526
ijohnson@cresa.com

Cresa

1355 NW Everett St, Suite 100
Portland, OR 97209

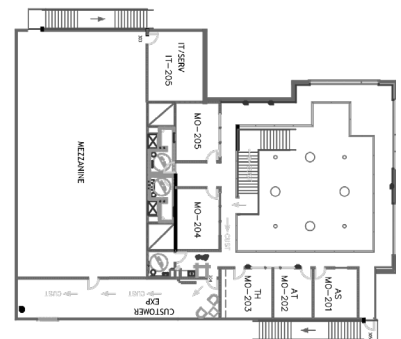
Summit Portal Way Building

19018 NE Portal Way
Gresham, OR 97230

*Entire warehouse is climate controlled



2nd Floor Mezzanine Office & Storage



Class A Industrial Sublease

cresa

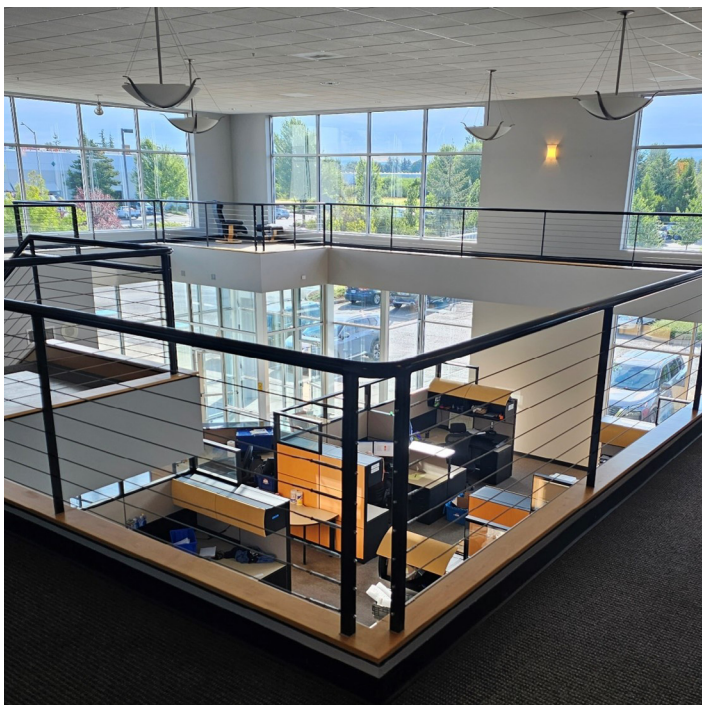
Summit Portal Way Building

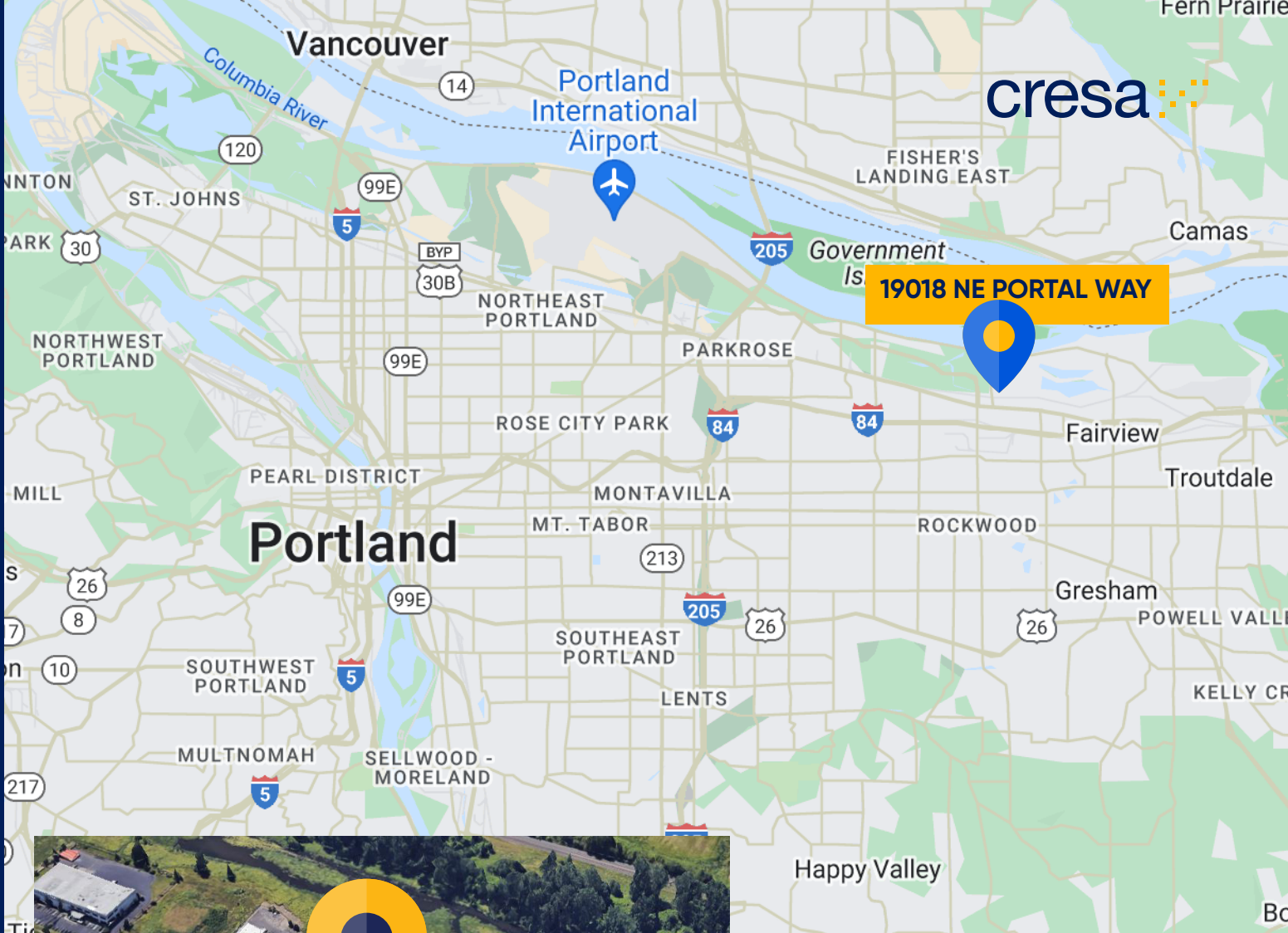
19018 NE Portal Way
Gresham, OR 97230

MORE PHOTOS



Click to view more





Class A Industrial Sublease

Summit Portal Way Building

**19018 NE Portal Way
Gresham, OR 97230**

For more information:



Sean Heaton
503.320.1961
sheaton@cresa.com



Sean Connors
503.886.8689
sconnors@cresa.com



Hayley Mueller
503.341.9034
hmueller@cresa.com



Isaiah Johnson
503.347.1526
ijohnson@cresa.com

Cresa

1355 NW Everett St, Suite 100
Portland, OR 97209