

VIEW THE  
VIRTUAL TOUR **360**



# Warehouse Sublease Available

2336 N Randolph  
Portland, OR 97227

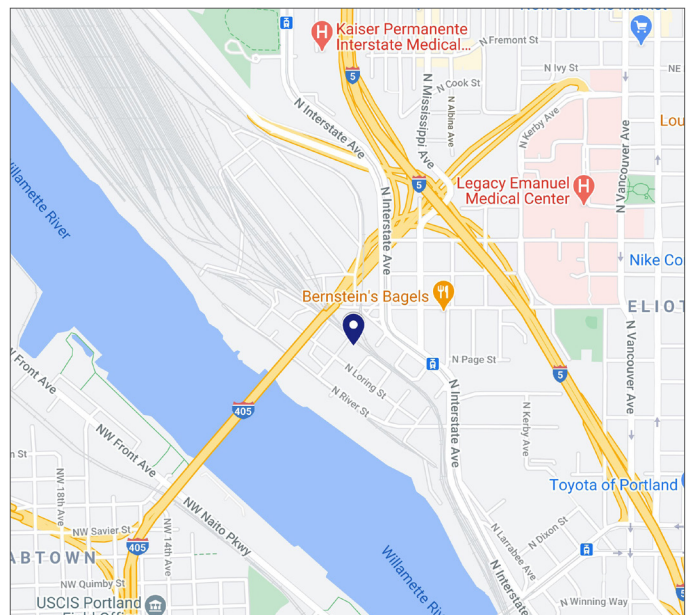
## Space Profile

<b>RSF</b>	+/- 10,000
<b>Rate</b>	Call for details
<b>Availability</b>	Within 30 days
<b>Built</b>	1950
<b>Parking</b>	TBD
<b>Sublease Term</b>	Thru March 31, 2026

## Features

- Fully insulated building
- T-5 lighting
- 1 grade door
- No columns
- Office: +/- 2,600 SF
- Mix of private offices, conference room, break room, restrooms, and a shower
- IG1 zoning
- Clear height: 14'
- Sprinkler: wet system

## Map



## For More Information

**Cresa Portland**  
1355 NE Everett St  
Suite 100  
Portland, OR 97209  
[www.cresa.com/portland](http://www.cresa.com/portland)

**Jack Foy**  
503.713.7740  
[jfoy@cresa.com](mailto:jfoy@cresa.com)

**Blake St. Onge**  
971.258.4631  
[bstonge@cresa.com](mailto:bstonge@cresa.com)



**34 Walk Score**



**91 Bike Score**



**62 Transit Score**

Even though obtained from sources deemed reliable, no warranty or representation, express or implied, is made as to the accuracy of the information herein, and it is subject to errors, omissions, change of price, rental or other conditions, withdrawal without notice, and to any special listing conditions imposed by our principals.

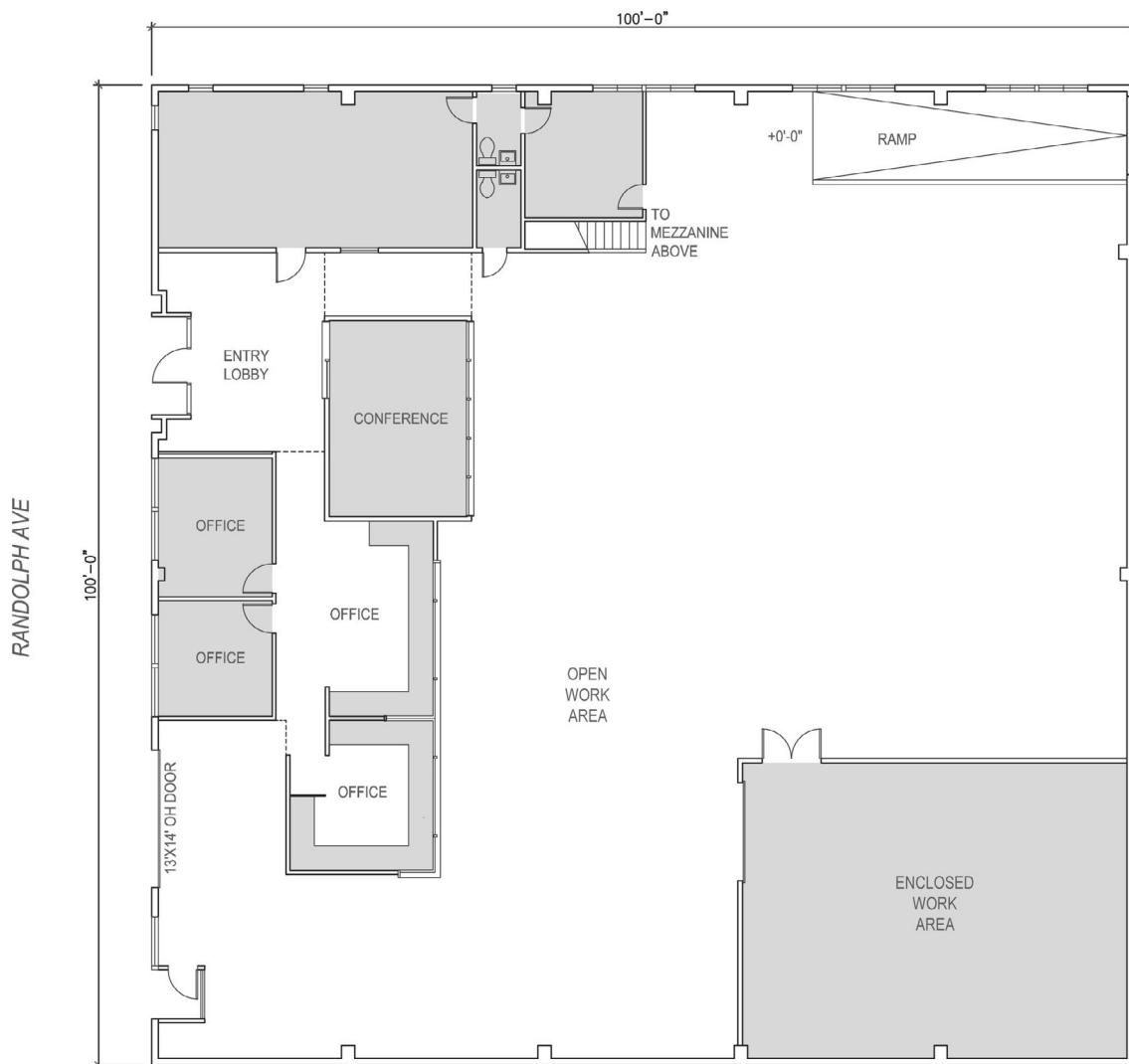
**cresa**

# Warehouse Sublease Available

2336 N Randolph  
Portland, OR 97227

Floor Plan

+/- 10,000 RSF



# Warehouse Sublease Available

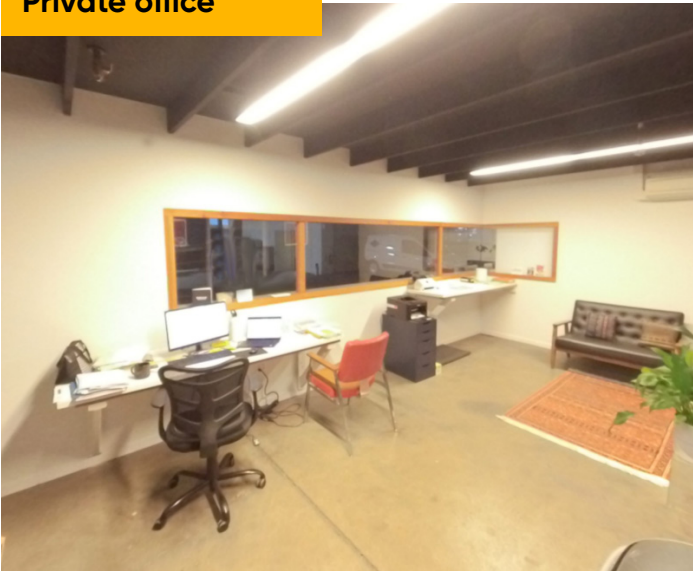
2336 N Randolph  
Portland, OR 97227

**+/- 10,000 RSF**

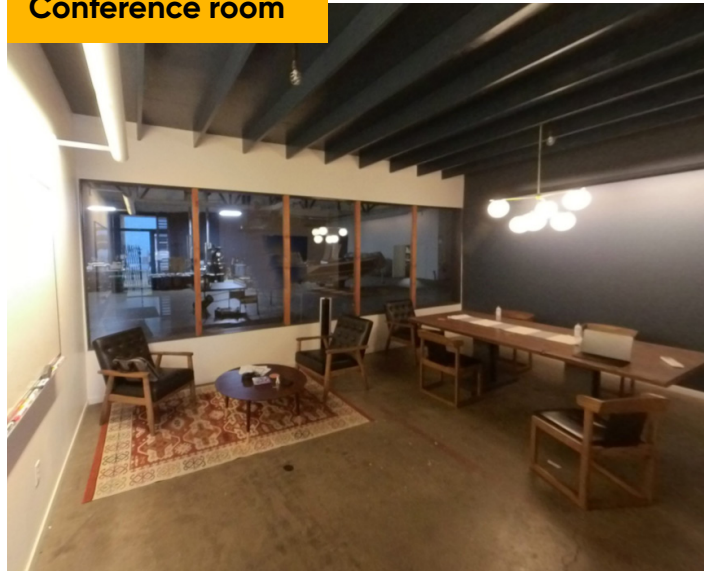
**Warehouse (NE corner)**



**Private office**



**Conference room**



Even though obtained from sources deemed reliable, no warranty or representation, express or implied, is made as to the accuracy of the information herein, and it is subject to errors, omissions, change of price, rental or other conditions, withdrawal without notice, and to any special listing conditions imposed by our principals.

**cresa**



# Warehouse Sublease Available

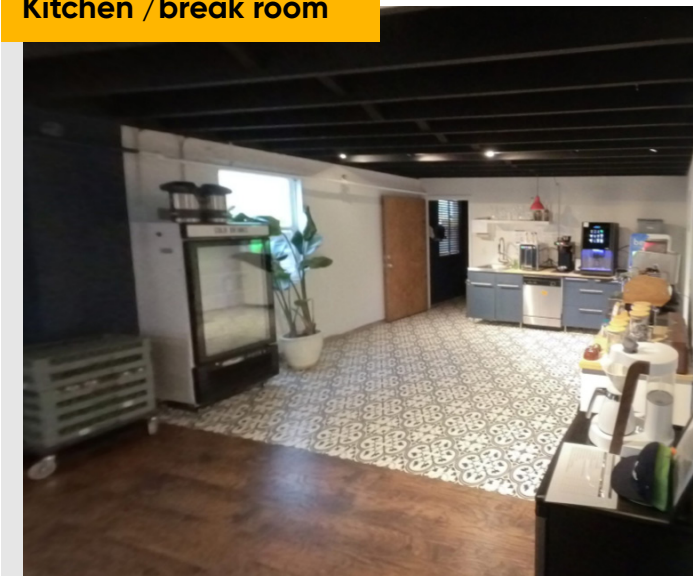
2336 N Randolph  
Portland, OR 97227

**+/- 10,000 RSF**

## Storage



## Kitchen /break room



## For More Information

**Cresa Portland**  
1355 NW Everett St  
Suite 100  
Portland, OR 97209  
[www.cresa.com/portland](http://www.cresa.com/portland)

**Jack Foy**  
503.713.7740  
[jfoy@cresa.com](mailto:jfoy@cresa.com)

**Blake St. Onge**  
971.258.4631  
[bstonge@cresa.com](mailto:bstonge@cresa.com)