



## Full Floor Sublease

Kruse Woods V  
5885 Meadows Rd, Suite 500  
Lake Oswego, OR 97035

### Features:

- Existing furniture negotiable
- Flying Elephants Delicatessen with inside and outside seating
- Complimentary conference facility
- Parking includes surface and covered parking

### Space Profile:

<b>Premises</b>	Suite 500	<b>Building Class</b>	Class A
<b>RSF</b>	24,390 (divisible)	<b>Submarket</b>	Kruse Way
<b>Rental Rate</b>	Withheld	<b>Built</b>	2003
<b>Availability</b>	30 Days	<b>Parking</b>	3.50 / 1,000 SF
<b>Term</b>	Thru March 2025		

### Contact:



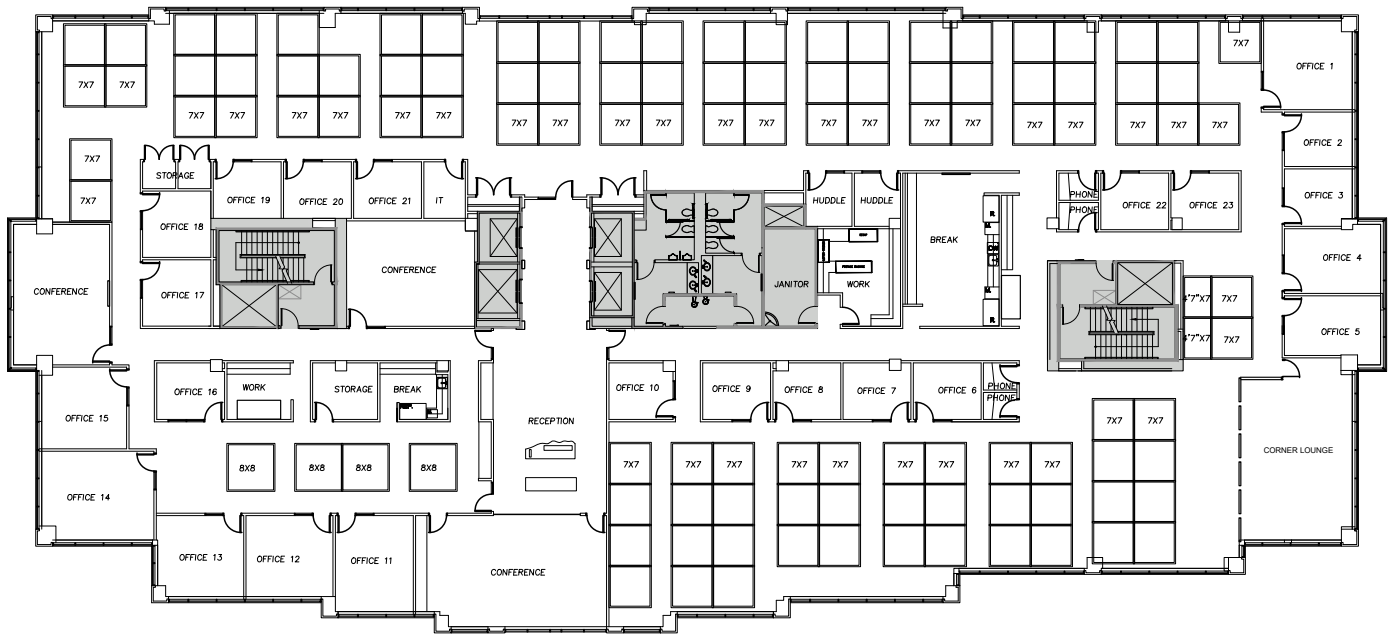
**Blake St. Onge**  
971.258.4631  
bstonge@cresa.com



**Sean Connors**  
503.455.8655  
sconnors@cresa.com

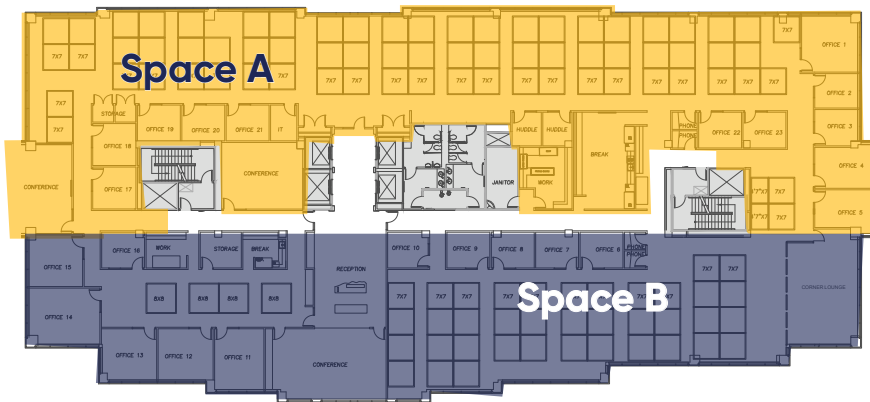


## Existing Floorplan



## Conceptual Multi-Tenant Floorplan

### Option 1



### Option 2



## Space Profile

Workstations	113
Private Offices	23
Conference Rooms	3
Break Rooms	3
Phone Room	4
Huddle Room	2
Work Room	2
Storage	3
Reception	1
IT Closet	1

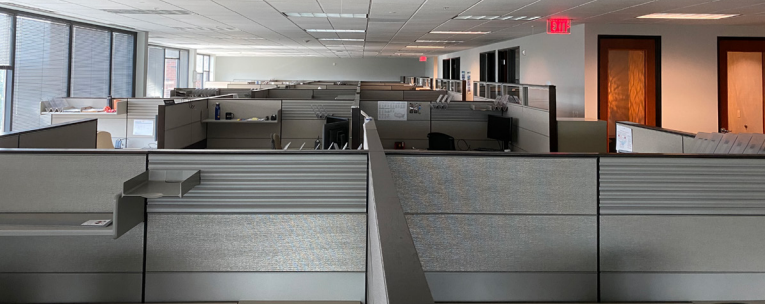
## Conceptual Floorplans

	Space A	Space B
Option 1	13,219 RSF	11,171 RSF
Option 2	10,341 RSF	14,049 RSF

These are approximate calculations and are subject to further review by master tenant and master landlord



Workstations



Conference Room



## Kruse Woods V

5885 Meadows Rd, Suite 500  
Lake Oswego, OR 97035

Break Room



Corner Lounge



Private Office



cresa

1355 NW Everett St | Portland, OR 97209

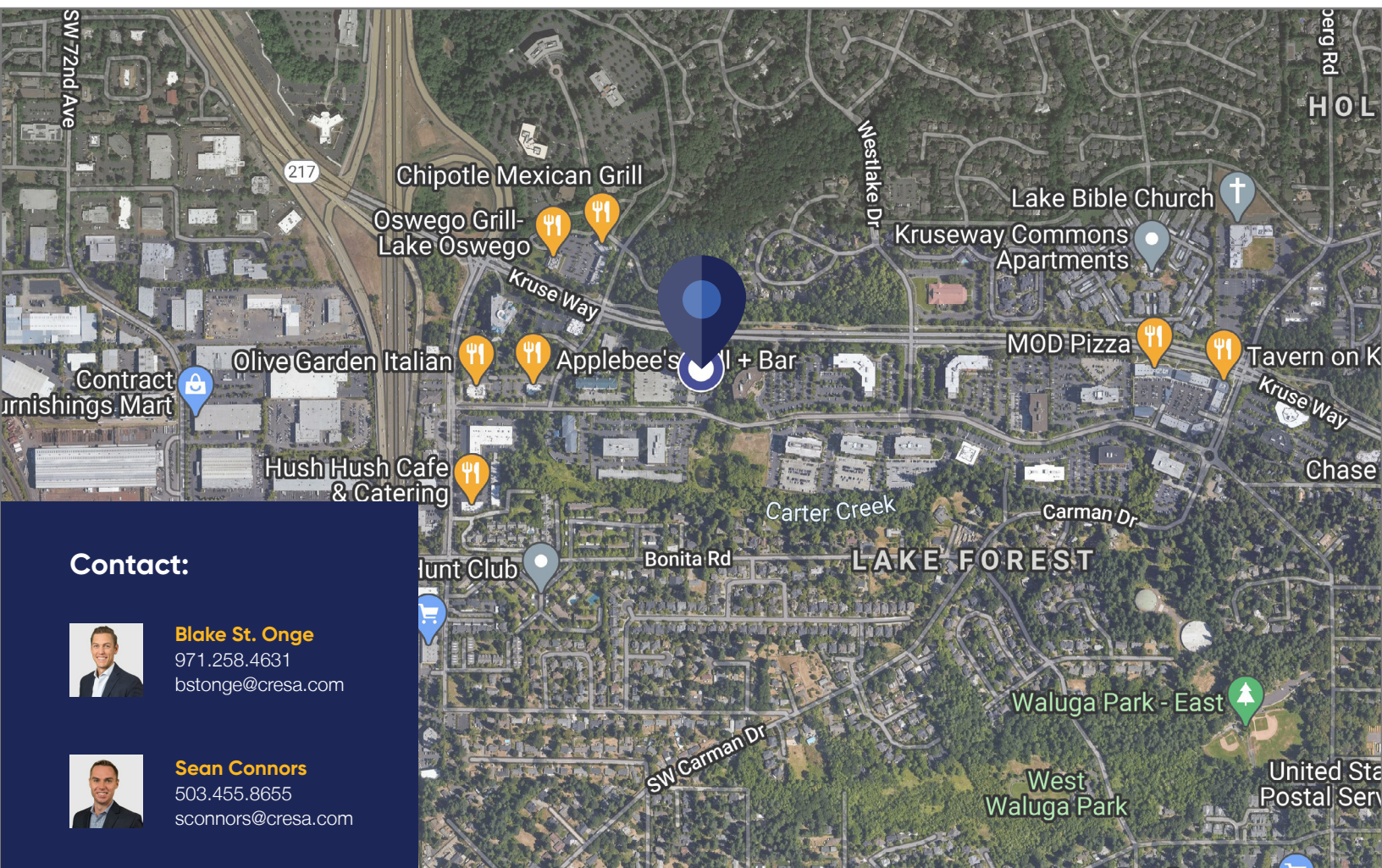
[cresa.com/Portland](http://cresa.com/Portland)





## Kruse Woods V

5885 Meadows Rd, Suite 500  
Lake Oswego, OR 97035



### Contact:



**Blake St. Onge**  
971.258.4631  
bstonge@cresa.com



**Sean Connors**  
503.455.8655  
sconnors@cresa.com

cresa

Cresa © 2021. All rights reserved. The information contained in this document has been obtained from sources believed reliable. While Cresa does not doubt its accuracy, Cresa has not verified it and makes no guarantee, warranty, or representation about it. It is your responsibility to independently confirm its accuracy and completeness. Any projections, opinions, assumptions or estimates used are for example only and do not represent the current or future performance of the property. The value of this transaction to you depends on tax and other factors which should be evaluated by your tax, financial and legal advisors. You and your advisors should conduct a careful, independent investigation of the property to determine to your satisfaction the suitability of the property for your needs.