



# Medical Office Building For Sale

6445 N Greeley Ave  
Portland, OR 97217

## Virtual tour:

<https://tours.cresa.com/6445NGreeleyAve>

## Space Profile

<b>Occupancy</b>	100% leased to Pacific Medical Group
<b>Building Size</b>	+/- 7,000 SF
<b>Lease Term</b>	Thru Oct 2023
<b>Sale Price</b>	Call for details
<b>Lot Size</b>	0.48 AC
<b>Submarket</b>	Hayden Island/Swan Island
<b>Built</b>	1995
<b>Parking</b>	+/- 20 Parking Stalls

## Features

- Includes 2nd story level with open storage, private offices, and roof access
- Well maintained property that is prominently positioned on N Rosa Parks with excellent visibility
- Property is zoned as Commercial Mixed Use, to include commercial and residential uses in the area
- 1.7 miles from University of Portland
- 0.7 miles from Adidas America HQ
- 1.6 miles from Daimler America HQ

## Map



## For More Information

**Cresa Portland**  
1355 NE Everett St  
Suite 100  
Portland, OR 97209  
[www.cresa.com/portland](http://www.cresa.com/portland)

**Mike Whitten**  
541.840.7990  
[mwhitten@cresa.com](mailto:mwhitten@cresa.com)

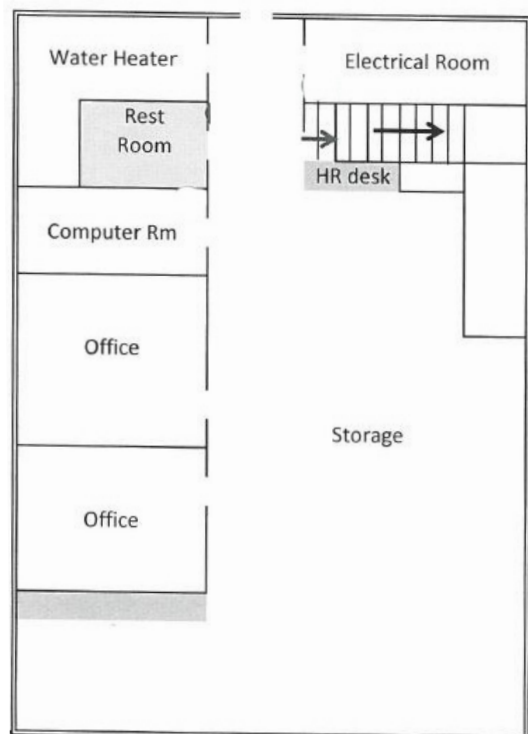
**Blake St. Onge**  
971.258.4631  
[bstonge@cresa.com](mailto:bstonge@cresa.com)

# Medical Office Building For Sale

6445 N Greeley Ave  
Portland, OR 97217

## Floor Plan

+/- 7,000 SF





# Medical Office Building For Sale

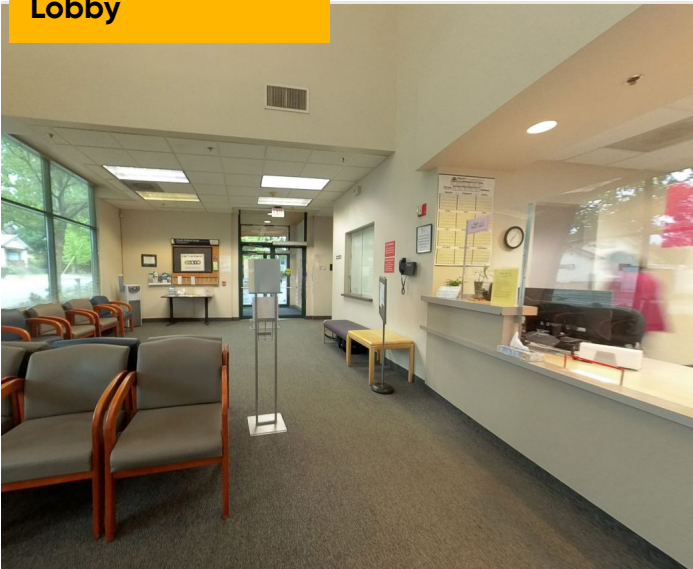
6445 N Greeley Ave  
Portland, OR 97217

**+/- 7,000 SF**

**Patient Services**



**Lobby**



**Nurse's station**



Even though obtained from sources deemed reliable, no warranty or representation, express or implied, is made as to the accuracy of the information herein, and it is subject to errors, omissions, change of price, rental or other conditions, withdrawal without notice, and to any special listing conditions imposed by our principals.

# Medical Office Building For Sale

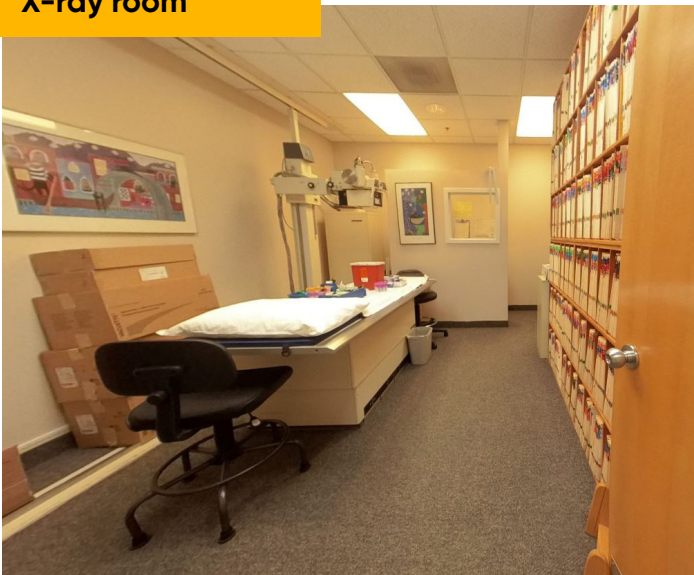
6445 N Greeley Ave  
Portland, OR 97217

**+/- 7,000 SF**

**Copy/supply room**



**X-ray room**



## For More Information

**Cresa Portland**  
1355 NW Everett St  
Suite 100  
Portland, OR 97209  
[www.cresa.com/portland](http://www.cresa.com/portland)

**Mike Whitten**  
541.840.7990  
[mwhitten@cresa.com](mailto:mwhitten@cresa.com)

**Blake St. Onge**  
971.258.4631  
[bstonge@cresa.com](mailto:bstonge@cresa.com)

Even though obtained from sources deemed reliable, no warranty or representation, express or implied, is made as to the accuracy of the information herein, and it is subject to errors, omissions, change of price, rental or other conditions, withdrawal without notice, and to any special listing conditions imposed by our principals.

**cresa**