

## Industrial Land Site For Sale

Site

cresa

# Land for Sale

31047 NW Highland Ct  
North Plains, OR 97133

### Property Profile:

Site Area	1.67 Acres
Proposed Building Area	15,615 GSF
Zoning	C-2 zoned covering general commercial, office, and retail usage
Land Price	\$1,150,000

15,000 SF industrial mixed use building preliminary design package available

### Features:

- Vacant, development ready lot
- Excellent signage opportunity located close-in North Plains along Highway 26
- Interchange supports Hillsboro, Cornelius, and Forest Grove
- Build-to-Suit Opportunity

### Contact:



**Sean Heaton**  
503.320.1961  
sheaton@cresa.com

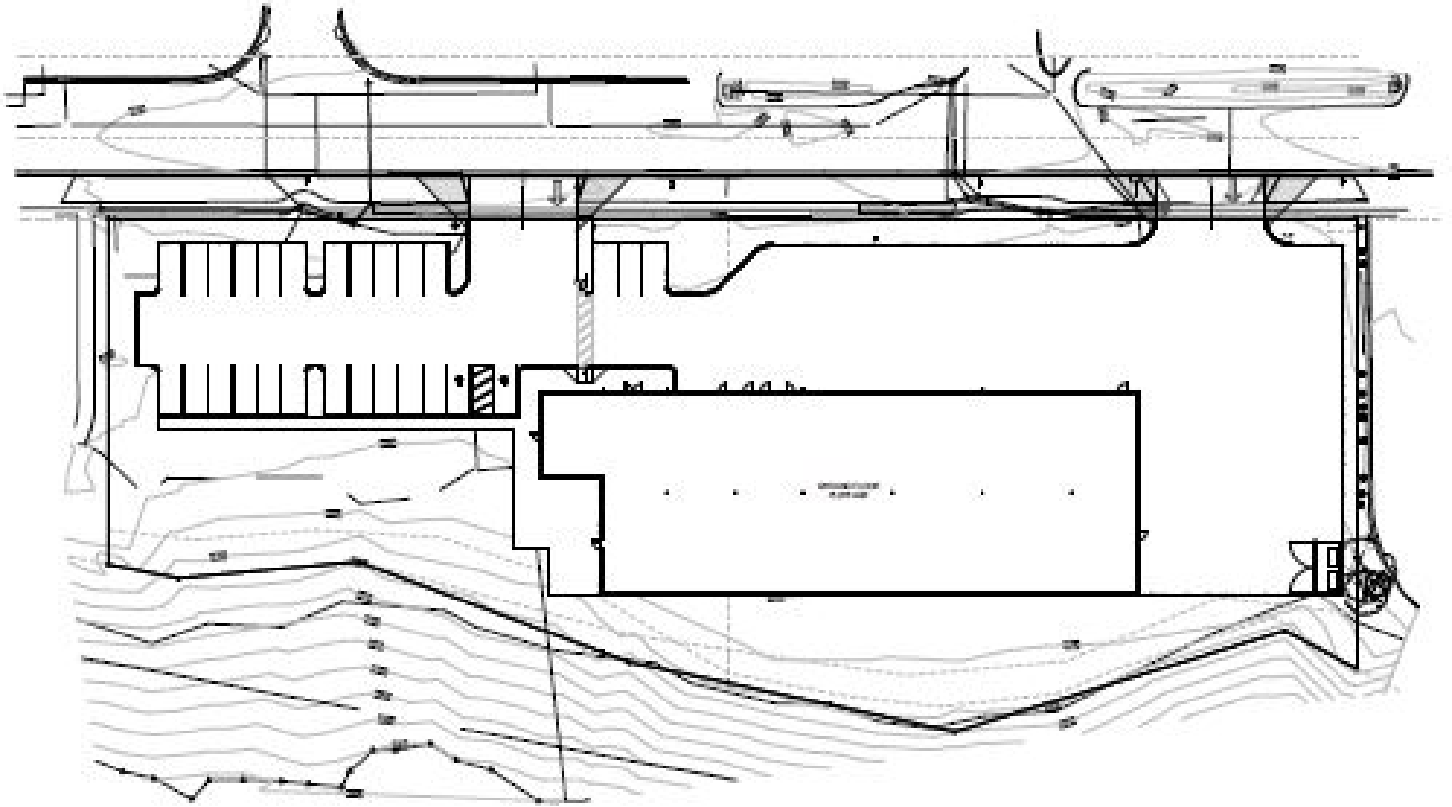


**Josh Haynes**  
503.784.8187  
jhaynes@cresa.com



**Hayley Mueller**  
503.341.9034  
hmueller@cresa.com

## Site Plan



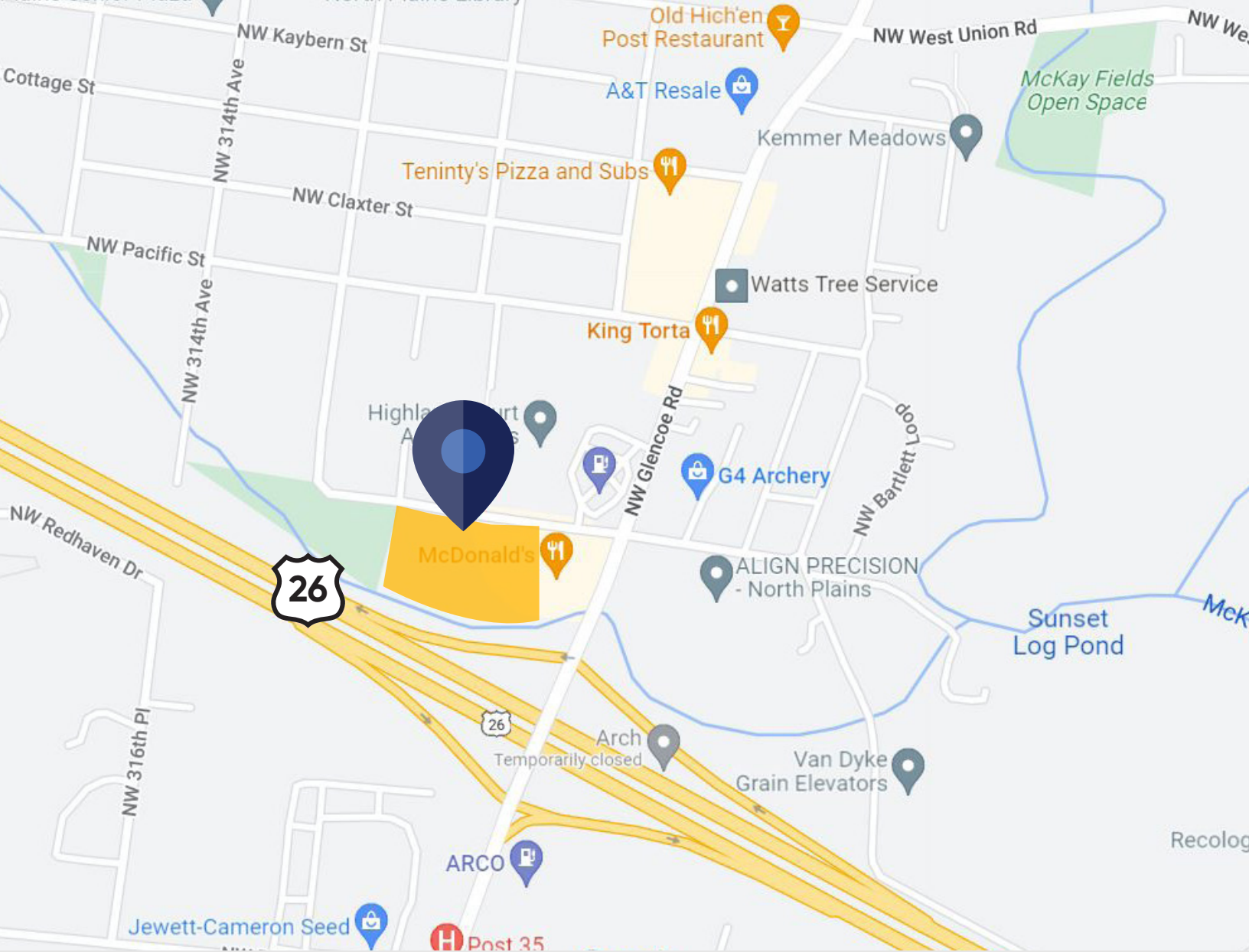
Current Land Photo



Building Rendering







# Land for Sale

31047 NW Highland Ct  
North Plains, OR 97133

## Contact:



**Sean Heaton**  
503.320.1961  
sheaton@cresa.com



**Josh Haynes**  
503.784.8187  
jhaynes@cresa.com



**Hayley Mueller**  
503.341.9034  
hmueller@cresa.com

**cresa** ::

1355 NW Everett St, Suite 100 | Portland, OR 97209

[cresa.com/Portland](https://cresa.com/Portland)