

FOR SALE Former Bank Building on Prime 1.49 Ac Commercial Corner in Grants Pass

PULVER & LEEVER
REAL ESTATE COMPANY
COMMERCIAL

cresa



Property Summary

PRICE	\$2,000,000
BUILDING SIZE	8,780 SF
SITE SIZE	1.49 Acre
YEAR BUILT	1979
ZONING	General Commercial
PARKING	48 spaces
PARKING RATIO	1:162
COUNTY	Josephine
DRIVE-THRU LANES	3
PARCEL NUMBER	307753
OCCUPANCY	Vacant Nov. 1, 2021

**100 NE Midland Ave
Grants Pass, OR 97530**

Exclusively Marketed By:

William 'Jeremy' Leever
Principal Broker
Pulver & Leever Real Estate Company
541.554.7828
jeremyleever@pulverandleever.com

Blake St. Onge
Principal
Cresa Portland
971.258.4631
bstonge@cresa.com

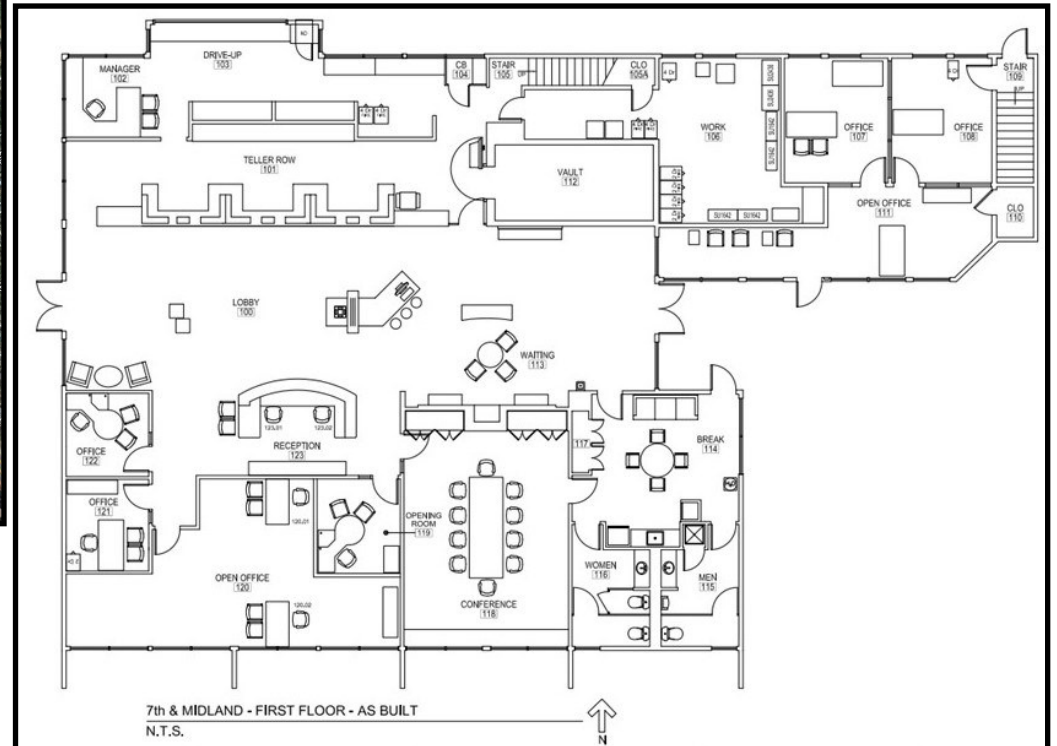
Michael Whitten
Vice President
Cresa Portland
541.840.7990
mwhitten@cresa.com

No Warranty or representation, express or implied, is made as to the accuracy of the information contained herein, and the same is submitted subject to errors, omissions, prior sale, lease, change of price, rental or other conditions, withdrawal without notice, and to any special listing conditions imposed by our principles. Owner reserves the right to approve tenant/purchaser and proposed use.

FOR SALE Former Bank Building on Prime 1.49 Ac Commercial Corner in Grants Pass



Approximately 8,780 SF / 1.49 AC



100 NE Midland Ave, Grants Pass, OR

**Exclusively
Marketed By:**

William 'Jeremy' Leever
Principal Broker
Pulver & Leever Real Estate Company
541.554.7828
jeremyleever@pulverandleever.com

Blake St. Onge
Principal
Cresa Portland
971.258.4631
bstonge@cresa.com

Michael Whitten
Vice President
Cresa Portland
541.840.7990
mwhitten@cresa.com

No Warranty or representation, express or implied, is made as to the accuracy of the information contained herein, and the same is submitted subject to errors, omissions, prior sale, lease, change of price, rental or other conditions, withdrawal without notice, and to any special listing conditions imposed by our principles. Owner reserves the right to approve tenant/purchaser and proposed use.

FOR SALE Former Bank Building on Prime 1.49 Ac Commercial Corner in Grants Pass



[Click Here](#)
[For](#)
[More](#)
[Pictures](#)



**Exclusively
Marketed By:**

William 'Jeremy' Leever
Principal Broker
Pulver & Leever Real Estate Company
541.554.7828
jeremyleever@pulverandleever.com

Blake St. Onge
Principal
Cresa Portland
971.258.4631
bstonge@cresa.com

Michael Whitten
Vice President
Cresa Portland
541.840.7990
mwhitten@cresa.com

No Warranty or representation, express or implied, is made as to the accuracy of the information contained herein, and the same is submitted subject to errors, omissions, prior sale, lease, change of price, rental or other conditions, withdrawal without notice, and to any special listing conditions imposed by our principles. Owner reserves the right to approve tenant/purchaser and proposed use.

FOR SALE Former Bank Building on Prime 1.49 Ac Commercial Corner in Grants Pass



Additional Information

[Grants Pass Chamber of Commerce](#)

[Travel Grants Pass](#)

[Demographics](#)

100 NE Midland Ave, Grants Pass, OR

**Exclusively
Marketed By:**

William 'Jeremy' Leever
Principal Broker
Pulver & Leever Real Estate Company
541.554.7828
jeremyleever@pulverandleever.com

Blake St. Onge
Principal
Cresa Portland
971.258.4631
bstonge@cresa.com

Michael Whitten
Vice President
Cresa Portland
541.840.7990
mwhitten@cresa.com

No Warranty or representation, express or implied, is made as to the accuracy of the information contained herein, and the same is submitted subject to errors, omissions, prior sale, lease, change of price, rental or other conditions, withdrawal without notice, and to any special listing conditions imposed by our principles. Owner reserves the right to approve tenant/purchaser and proposed use.