

# Sublease



## Cofco Center Court

**690 N Cofco Center Ct**

**Suite 230 – 14,830 RSF | Suite 270 – 3,940 RSF**

### Building Profile:

Year Built	2002
Year Renov	2018
Stories	2
RBA	76,731 SF
Rental Rate	\$22.00/SF/YR, FSG
Availability	Immediate
Term	Thru Feb. 2025
Submarket	44th St Corridor
Parking	5.00/1000

## Suites can be Subleased Separately

### Contact:



**Brandon Clarke**  
602-770-3464  
bclarke@cresa.com

**cresa** :: ::

Cresa © 2019. All rights reserved. The information contained in this document has been obtained from sources believed reliable. While Cresa does not doubt its accuracy, Cresa has not verified it and makes no guarantee, warranty, or representation about it. It is your responsibility to independently confirm its accuracy and completeness. Any projections, opinions, assumptions or estimates used are for example only and do not represent the current or future performance of the property. The value of this transaction to you depends on tax and other factors which should be evaluated by your tax, financial and legal advisors. You and your advisors should conduct a careful, independent investigation of the property to determine to your satisfaction the suitability of the property for your needs.



# Sublease

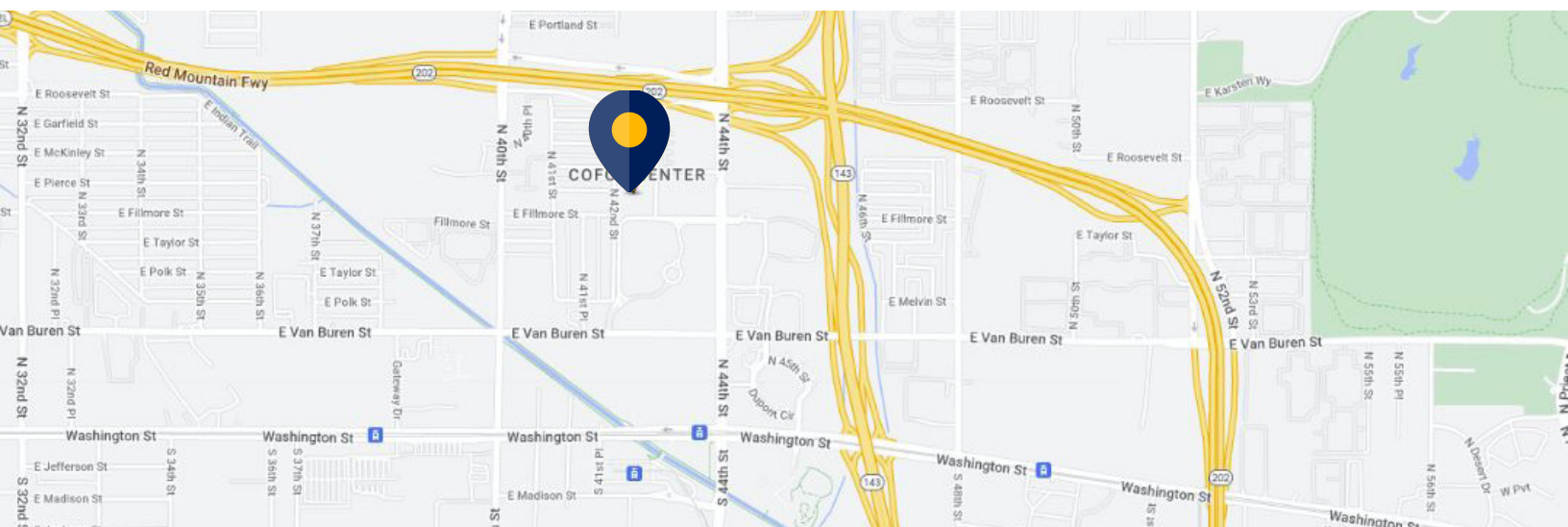


## Building Highlights:

- One block South of Loop 202 Freeway
- Within 2 miles from Sky Harbor International Airport
- Walking distance to Phoenix Light Rail, providing direct access to retail, dining & hotels



## Recently Renovated Lobby & Restrooms



cresa

Cresa © 2019. All rights reserved. The information contained in this document has been obtained from sources believed reliable. While Cresa does not doubt its accuracy, Cresa has not verified it and makes no guarantee, warranty, or representation about it. It is your responsibility to independently confirm its accuracy and completeness. Any projections, opinions, assumptions or estimates used are for example only and do not represent the current or future performance of the property. The value of this transaction to you depends on tax and other factors which should be evaluated by your tax, financial and legal advisors. You and your advisors should conduct a careful, independent investigation of the property to determine to your satisfaction the suitability of the property for your needs.





## 690 N Cofco Center Ct Suite 230 – 14,830 RSF

### Space Features:

- 19 Offices
- 5 Conference Rooms
- 1 IT Room | 1 Printing Room
- 1 Kitchen/Break Room Area with Retractable Door Expands Classroom Footprint.
- Open Space Floor Plan
- All or Portion of FF&E can be Available



cresa

Cresa © 2019. All rights reserved. The information contained in this document has been obtained from sources believed reliable. While Cresa does not doubt its accuracy, Cresa has not verified it and makes no guarantee, warranty, or representation about it. It is your responsibility to independently confirm its accuracy and completeness. Any projections, opinions, assumptions or estimates used are for example only and do not represent the current or future performance of the property. The value of this transaction to you depends on tax and other factors which should be evaluated by your tax, financial and legal advisors. You and your advisors should conduct a careful, independent investigation of the property to determine to your satisfaction the suitability of the property for your needs.





## Space Features:

- 3 Offices
- 1 Break Room
- 1 Storage/IT Room
- 1 Large Flex/Conference Room
- Open Space Floor Plan
- Midtown Views

**690 N Cofco Center Ct**  
**Suite 270 – 3,940 RSF**



## Contact:



**Brandon Clarke**  
 602-770-3464  
[bclarke@cresa.com](mailto:bclarke@cresa.com)



Cresa © 2019. All rights reserved. The information contained in this document has been obtained from sources believed reliable. While Cresa does not doubt its accuracy, Cresa has not verified it and makes no guarantee, warranty, or representation about it. It is your responsibility to independently confirm its accuracy and completeness. Any projections, opinions, assumptions or estimates used are for example only and do not represent the current or future performance of the property. The value of this transaction to you depends on tax and other factors which should be evaluated by your tax, financial and legal advisors. You and your advisors should conduct a careful, independent investigation of the property to determine to your satisfaction the suitability of the property for your needs.

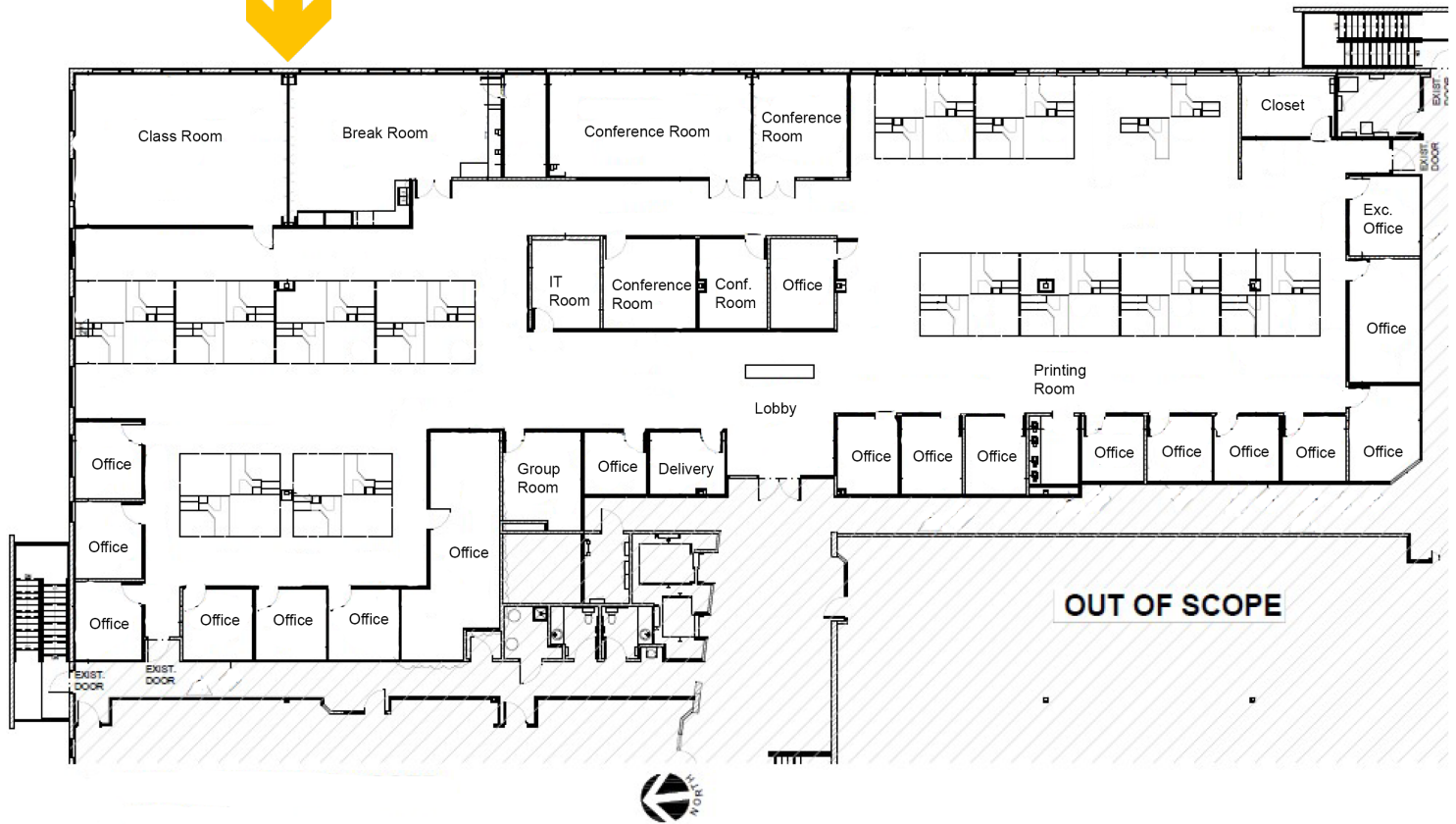


# Suite 230 - 14,830 RSF

VIEW THE  
VIRTUAL TOUR **360°**

- 19 Offices
- 5 Conference/Colab Rooms
- 1 IT Room
- 1 Printing Room
- 1 Delivery Room
- 1 Break Room
- 1 Classroom with a Retractable Door

**Retractable Door**



**cresa** ::

Cresa © 2019. All rights reserved. The information contained in this document has been obtained from sources believed reliable. While Cresa does not doubt its accuracy, Cresa has not verified it and makes no guarantee, warranty, or representation about it. It is your responsibility to independently confirm its accuracy and completeness. Any projections, opinions, assumptions or estimates used are for example only and do not represent the current or future performance of the property. The value of this transaction to you depends on tax and other factors which should be evaluated by your tax, financial and legal advisors. You and your advisors should conduct a careful, independent investigation of the property to determine to your satisfaction the suitability of the property for your needs.



# Suite 270 – 3,940 RSF

VIEW THE  
VIRTUAL TOUR **360°**

- 3 Offices
- 1 Break Room
- 1 Storage/IT Room
- 1 Large Flex/Conference Room



**cresa** ::::

Cresa © 2019. All rights reserved. The information contained in this document has been obtained from sources believed reliable. While Cresa does not doubt its accuracy, Cresa has not verified it and makes no guarantee, warranty, or representation about it. It is your responsibility to independently confirm its accuracy and completeness. Any projections, opinions, assumptions or estimates used are for example only and do not represent the current or future performance of the property. The value of this transaction to you depends on tax and other factors which should be evaluated by your tax, financial and legal advisors. You and your advisors should conduct a careful, independent investigation of the property to determine to your satisfaction the suitability of the property for your needs.