

Asking Rate Reduction

cresa

For Sublease

333 North Wilmot Road

Suite 237

Tucson, AZ 85711

Space Profile:

Premises:	Suite 237
RSF:	2,348 RSF
Rental Rate:	\$18.00/RSF/YR, Full-Service Gross \$17.00/RSF/YR, Full-Service Gross
Availability:	30 Days
Sublease Term:	Through 4/30/2025
Building Class:	Class B Office
Submarket:	Central Tucson

**For more
information
contact:**



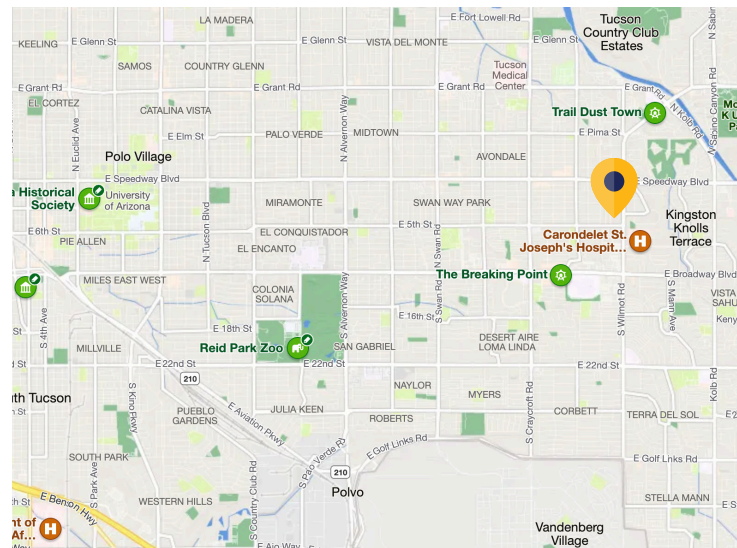
Brandon Clarke
Principal
602.648.4965
bclarke@cresa.com



Kyle Stickles
Vice President
480.432.4109
kstickles@cresa.com

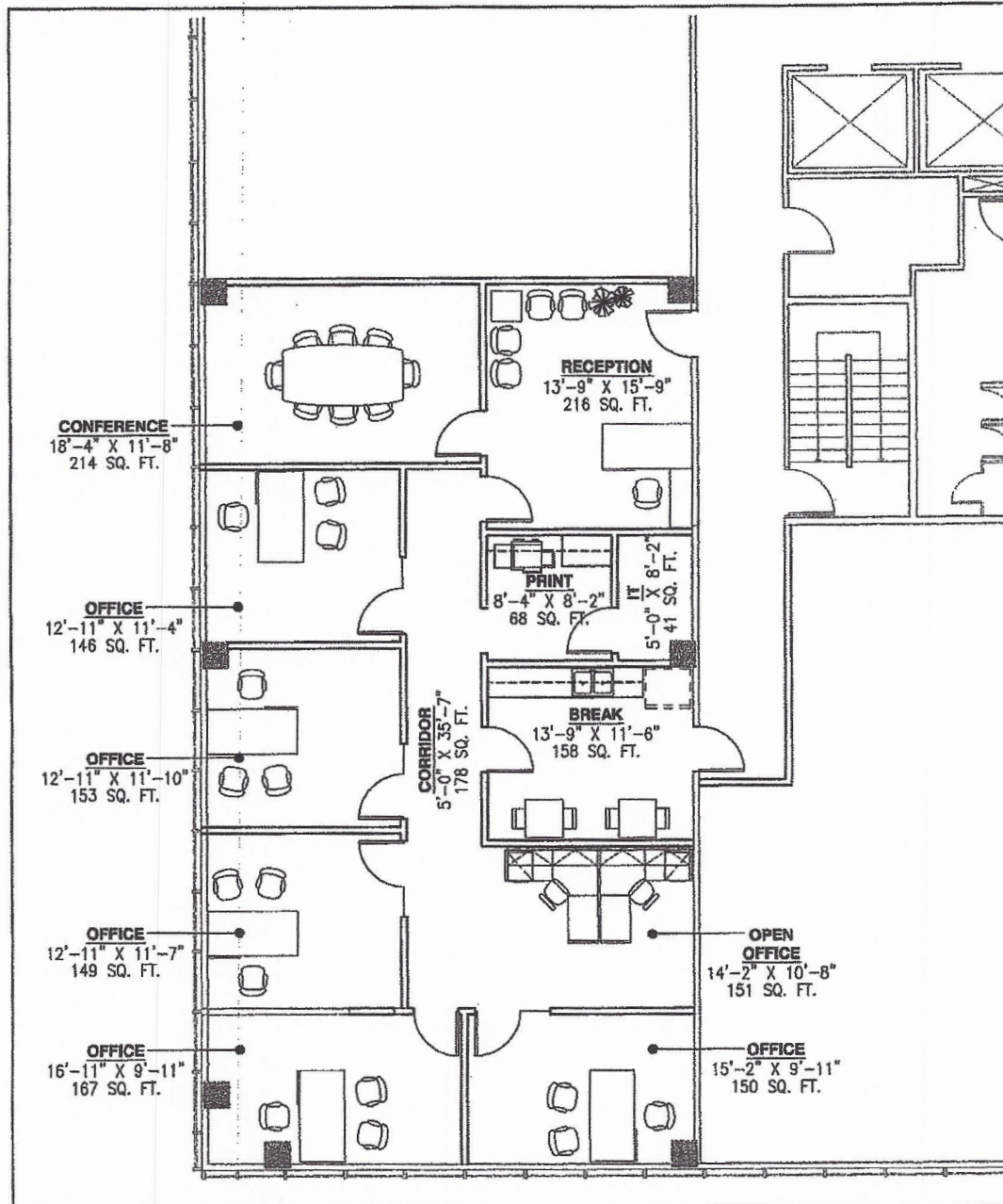
Features:

- Availability of Existing Furniture is Negotiable
- Current Law Firm Use
- Great Window Line with 2 Sides of Glass
- Sidelights on All Private Offices
- New Indirect/Direct LED Lights



333 N. Wilmon Road

Suite 237 - 2,348 RSF



cresa

Cresa © 2019. All rights reserved. The information contained in this document has been obtained from sources believed reliable. While Cresa does not doubt its accuracy, Cresa has not verified it and makes no guarantee, warranty, or representation about it. It is your responsibility to independently confirm its accuracy and completeness. Any projections, opinions, assumptions or estimates used are for example only and do not represent the current or future performance of the property. The value of this transaction to you depends on tax and other factors which should be evaluated by your tax, financial and legal advisors. You and your advisors should conduct a careful, independent investigation of the property to determine to your satisfaction the suitability of the property for your needs.



333 N. Wilmot Road

Tucson, AZ 85711



cresa . . .

Cresa © 2021. All rights reserved. The information contained in this document has been obtained from sources believed reliable. While Cresa does not doubt its accuracy, Cresa has not verified it and makes no guarantee, warranty, or representation about it. It is your responsibility to independently confirm its accuracy and completeness. Any projections, opinions, assumptions or estimates used are for example only and do not represent the current or future performance of the property. The value of this transaction to you depends on tax and other factors which should be evaluated by your tax, financial and legal advisors. You and your advisors should conduct a careful, independent investigation of the property to determine to your satisfaction the suitability of the property for your needs.