



For Sale

**350 Wall Street
Danville, PA**

Property Summary

Main Building

Price	\$1,600,000
Building	118,000 SF
Ceiling Height	45' sloping to 35'
Loading Docks	10 loading docks with manual levelers
Column Spacing	20' 7' x 20'
Office Space	Mezzanine office
Five Cranes	50-ton, 40-ton, 30-ton, 20-ton, 15-ton
Includes	Shop, 2 offices, breakroom, restrooms
Power	440 volt power

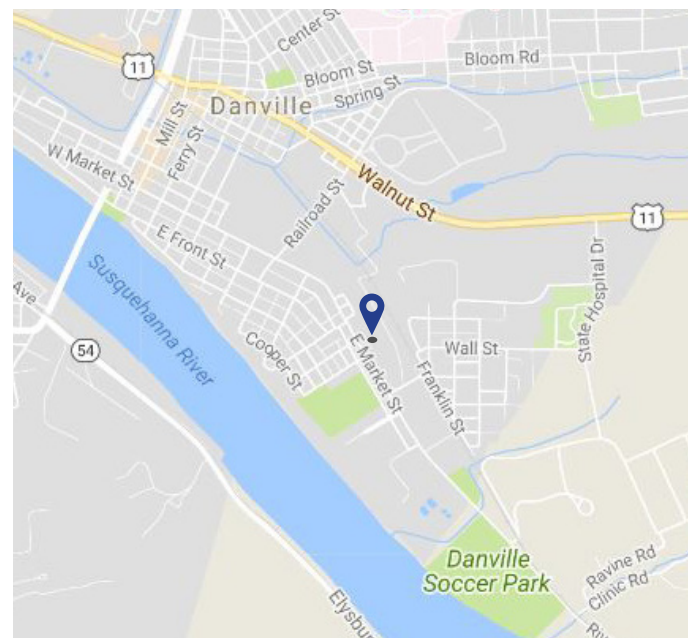
Annex

Building	15,000 SF
Ceiling Height	40'
Loading Docks	2 loading docks
Column Spacing	Column free

Features

- Tax benefits of Local Economic Revitalization Tax Assistance (LERTA)
- Located four miles from Exit 224 of I-80
- 9 acre site
- Fully fenced with yard
- Ample parking
- Rail service available

Map



For More Information

Cresa

One West First Avenue
Suite 201
Philadelphia, PA 19428
cresa.com/philadelphia



Margo Mocarski

610.684.1994
mmocarski@cresa.com



Steve Stefanski

610.825.2766
sstefanski@cresa.com

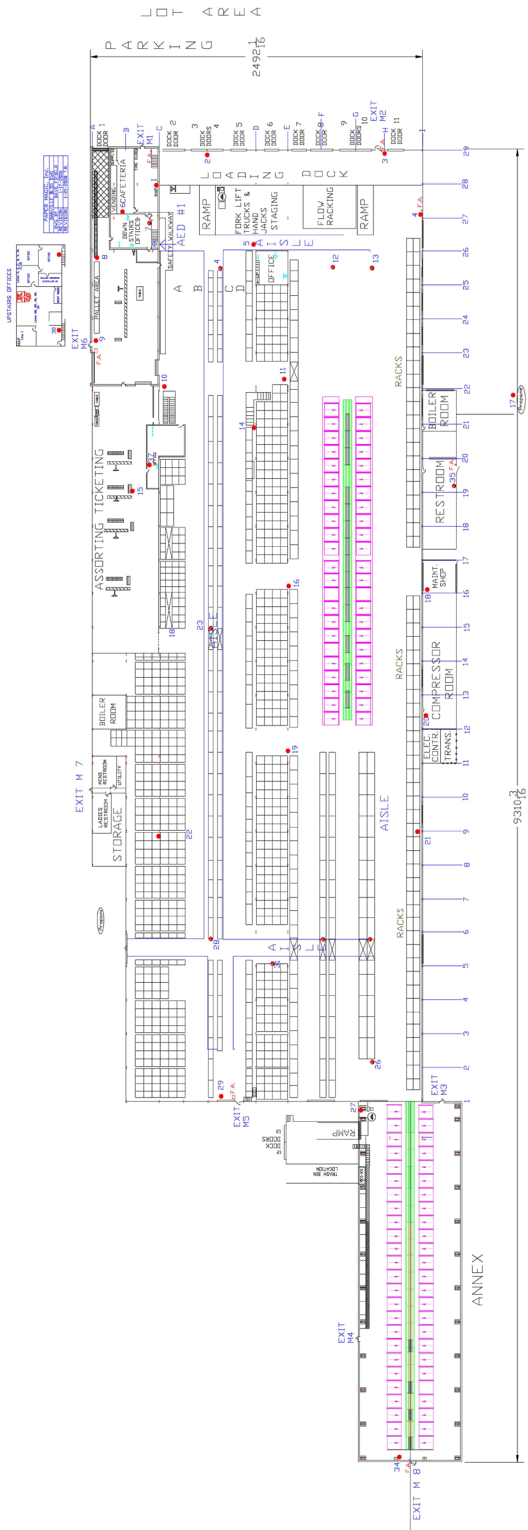
Even though obtained from sources deemed reliable, no warranty or representation, express or implied, is made as to the accuracy of the information herein, and it is subject to errors, omissions, change of price, rental or other conditions, withdrawal without notice, and to any special listing conditions imposed by our principals.

cresa



350 Wall Street
Danville, PA

Floor Plan



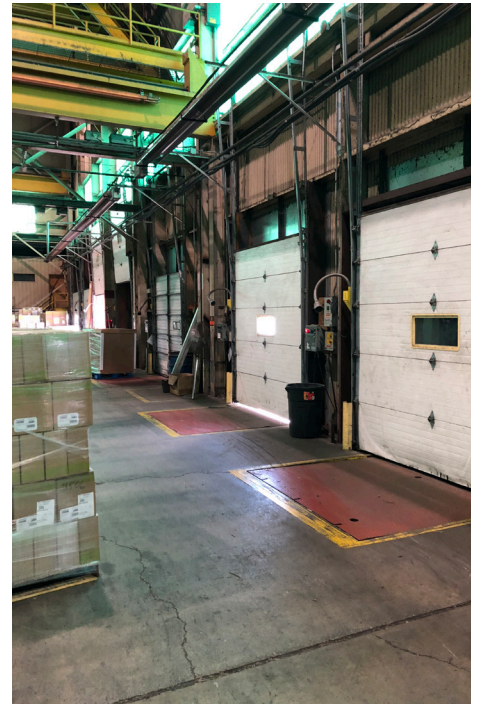
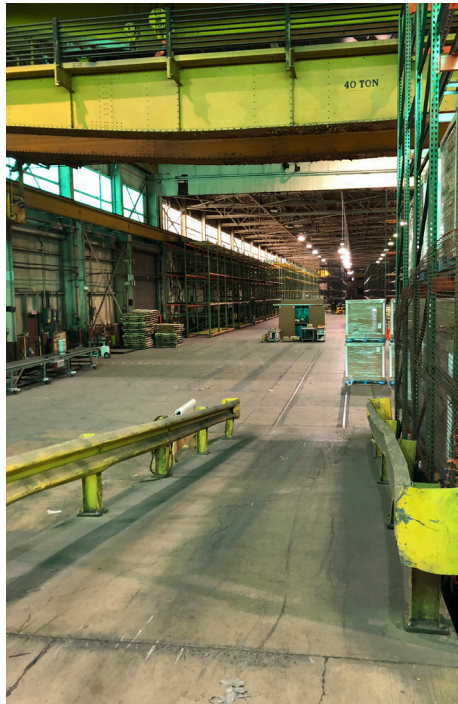
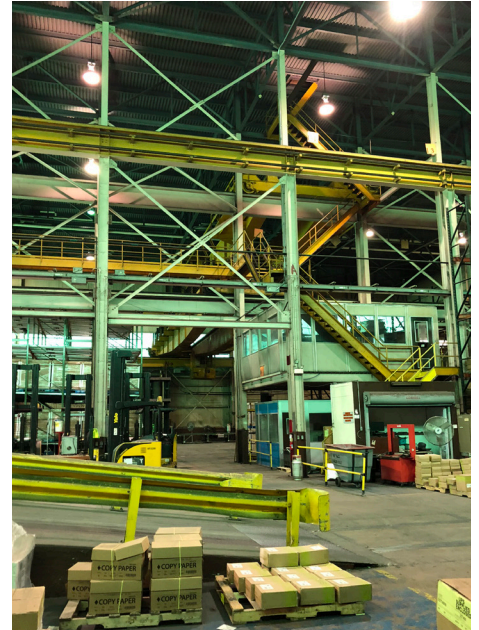
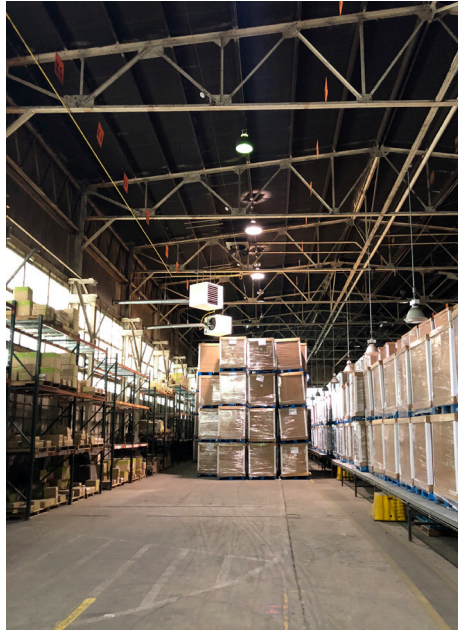
Exterior





350 Wall Street
Danville, PA

Interior



For More Information

Margo Mocarski
610.684.1994
mmocarski@cresa.com

Steve Stefanski
610.825.2766
sstefanski@cresa.com