

# Sublease Available

**Centre Square  
1500 Market Street  
Philadelphia, PA**

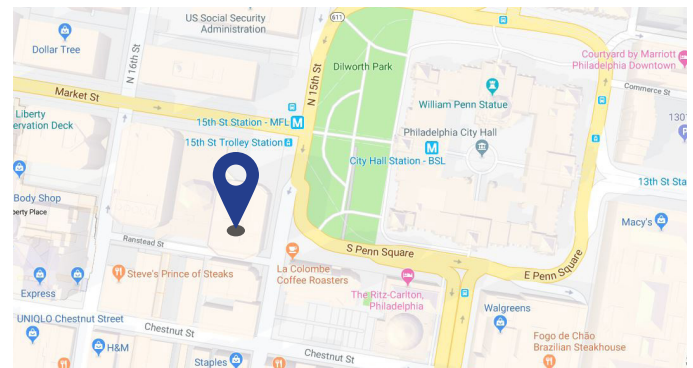
## Space Profile

<b>Floor</b>	27th Floor - West Tower
<b>Square Feet</b>	9,617 RSF
<b>Rental Rate/SF</b>	\$27.50 + Electric
<b>Availability</b>	Immediate
<b>Term</b>	Thru March 2025
<b>Building Class</b>	A

## Features

- Plug and Play Corporate Headquarters
- Excellent natural light
- Unobstructed views of City Hall, Dilworth Park and the Delaware River
- 69 workstations (5x5)
- 21 seat training / conference room with retractable wall
- 4 Internal wired sidelights offices / focus rooms
- Kitchenette
- Direct concourse access to SEPTA & Regional Rail

## Map



## For More Information



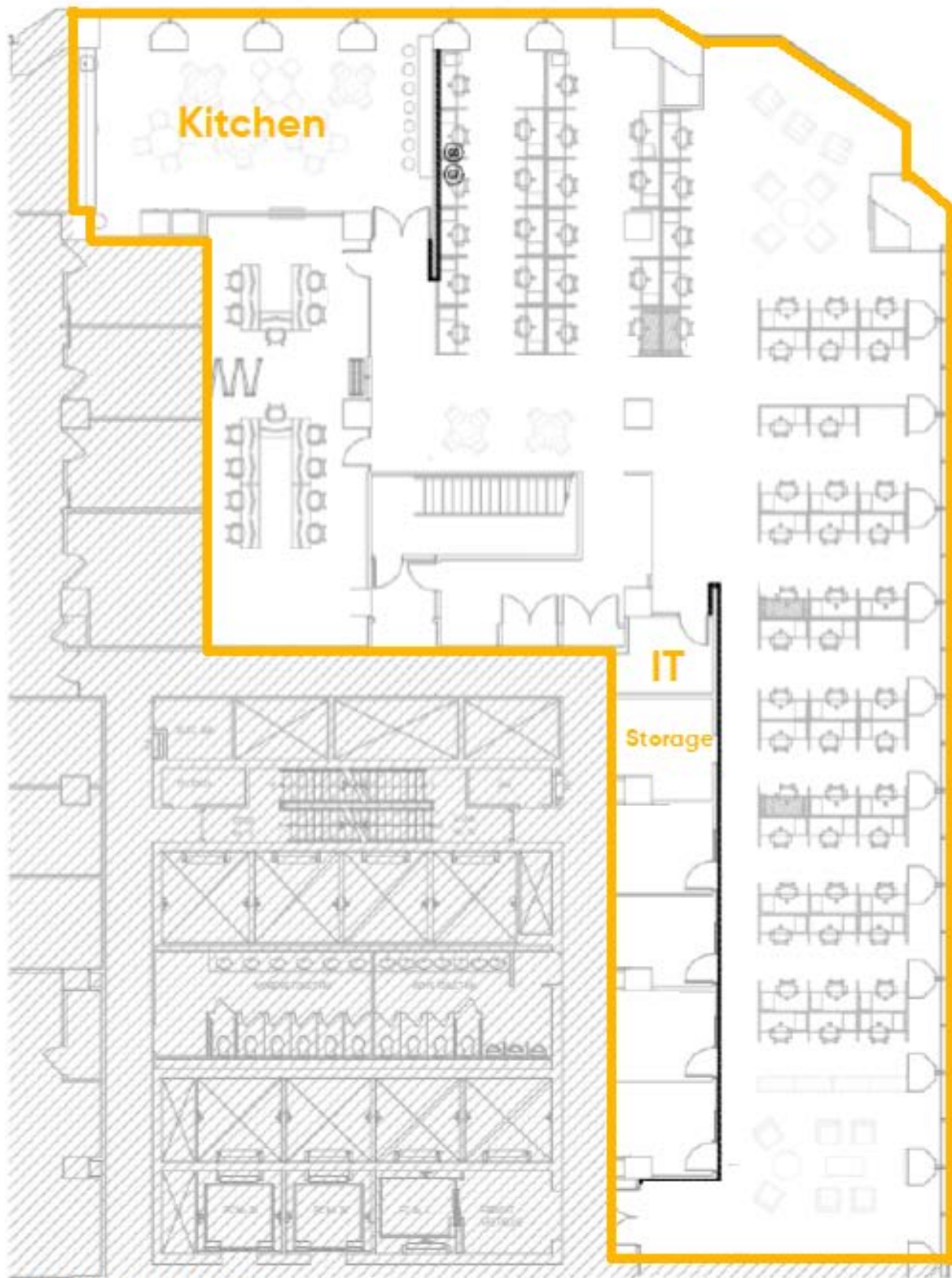
**Eric Pinchak**  
610.684.1993  
epinchak@cresa.com



**Jeff Baker**  
610.825.2292  
jbaker@cresa.com

Even though obtained from sources deemed reliable, no warranty or representation, express or implied, is made as to the accuracy of the information herein, and it is subject to errors, omissions, change of price, rental or other conditions, withdrawal without notice, and to any special listing conditions imposed by our principals.







**Centre Square  
1500 Market Street  
Philadelphia, PA**

**27th Floor - 9,617 RSF**



## **For More Information**

**Eric Pinchak**  
610.684.1993  
[epinchak@cresa.com](mailto:epinchak@cresa.com)

**Jeff Baker**  
610.825.2292  
[jbaker@cresa.com](mailto:jbaker@cresa.com)