

Sublease Available

**Centre Square
1500 Market Street
Philadelphia, PA**



**Click here to view
our video tour!**

Space Profile

Floor	27th & 28th Floor - West Tower
Square Feet	9,617 RSF & 29,583 SF
Rental Rate	\$27.50 + Electric
Availability	Immediate
Term	Thru September 2028 (or less)
Building Class	A

Features

- Plug and Play Corporate Headquarters
- Excellent natural light
- Unobstructed views of City Hall, Dilworth Park and the Delaware River
- Direct concourse access to SEPTA & Regional Rail

Map



For More Information



Eric Pinchak
610.684.1993
epinchak@cresa.com



Jeff Baker
610.825.2292
jbaker@cresa.com

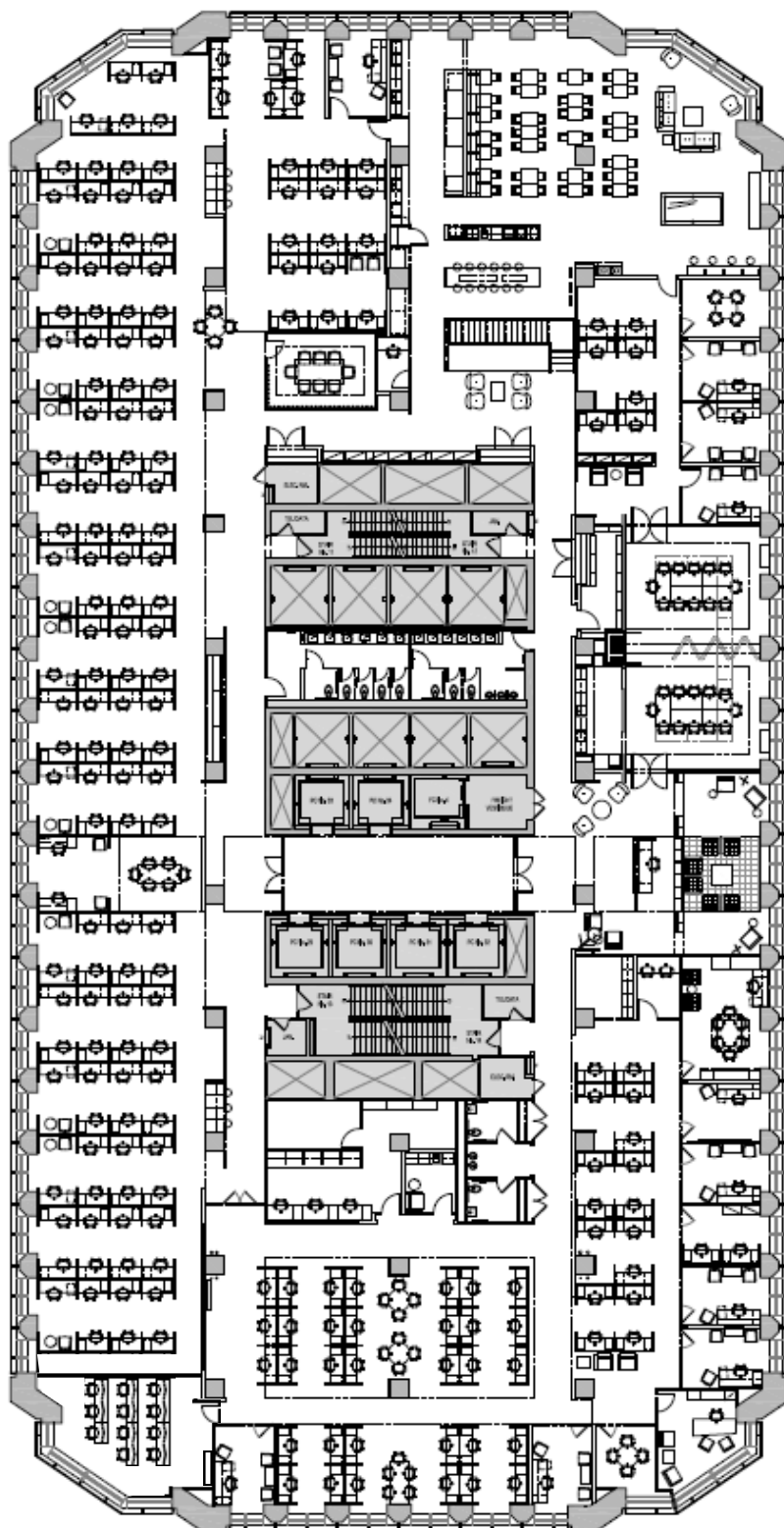
Even though obtained from sources deemed reliable, no warranty or representation, express or implied, is made as to the accuracy of the information herein, and it is subject to errors, omissions, change of price, rental or other conditions, withdrawal without notice, and to any special listing conditions imposed by our principals.



Three Logan Square, 1717 Arch Street, Suite 1305
Philadelphia, PA 19103

28th Floor Plan - 29,583 RSF

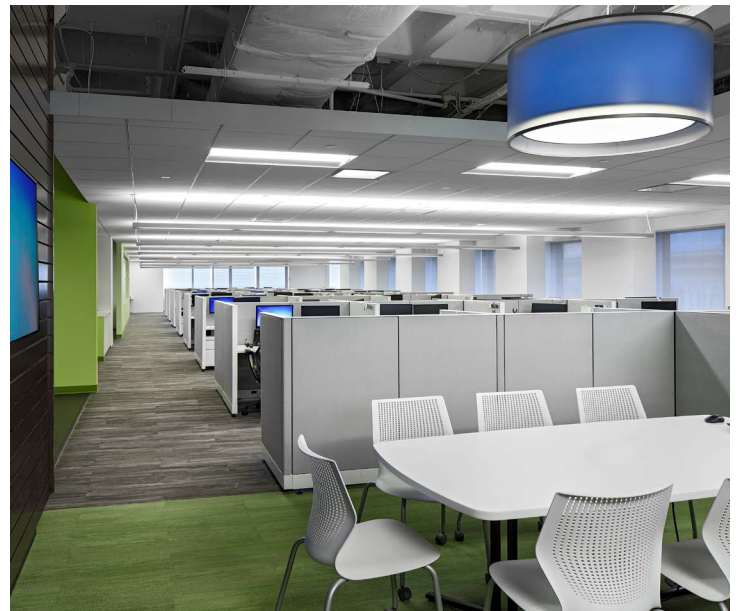
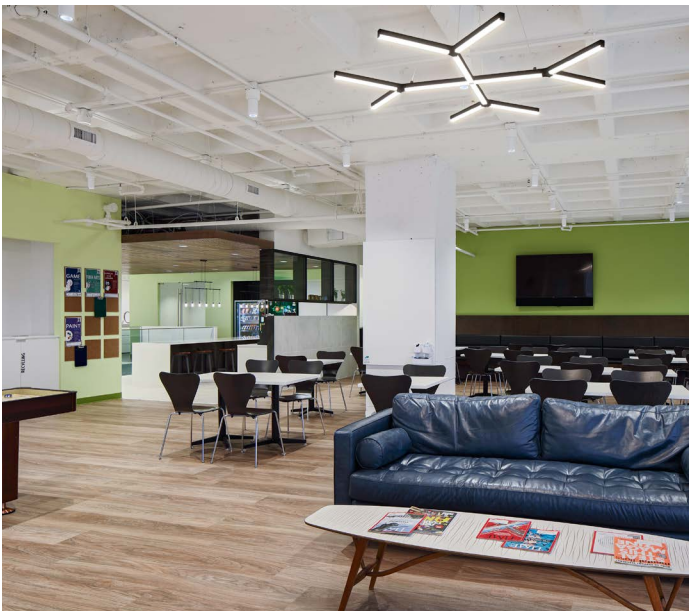
- 174 workstations
- 4 training / conference rooms
- 11 offices / focus rooms





**Centre Square
1500 Market Street
Philadelphia, PA**

28th Floor Plan - 29,583 RSF



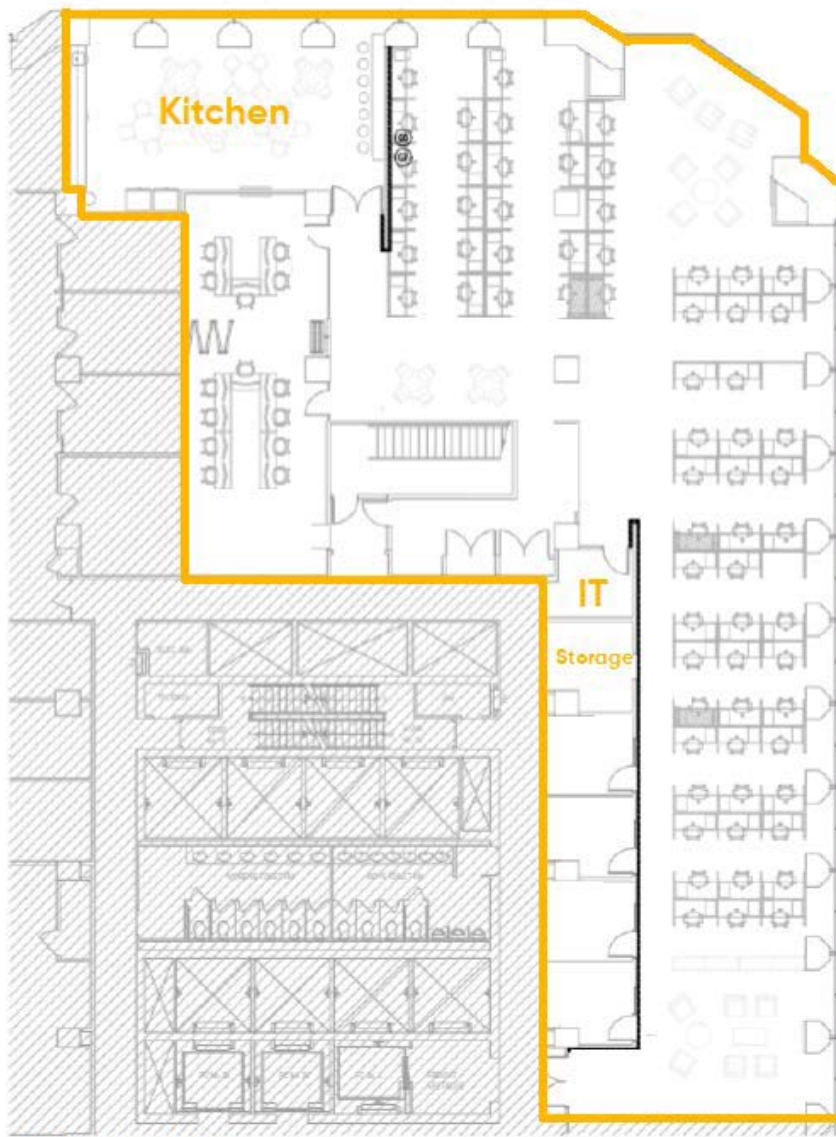
For More Information

Eric Pinchak
610.684.1993
epinchak@cresa.com

Jeff Baker
610.825.2292
jbaker@cresa.com

Three Logan Square, 1717 Arch Street, Suite 1305
Philadelphia, PA 19103

27th Floor Plan - 9,617 RSF

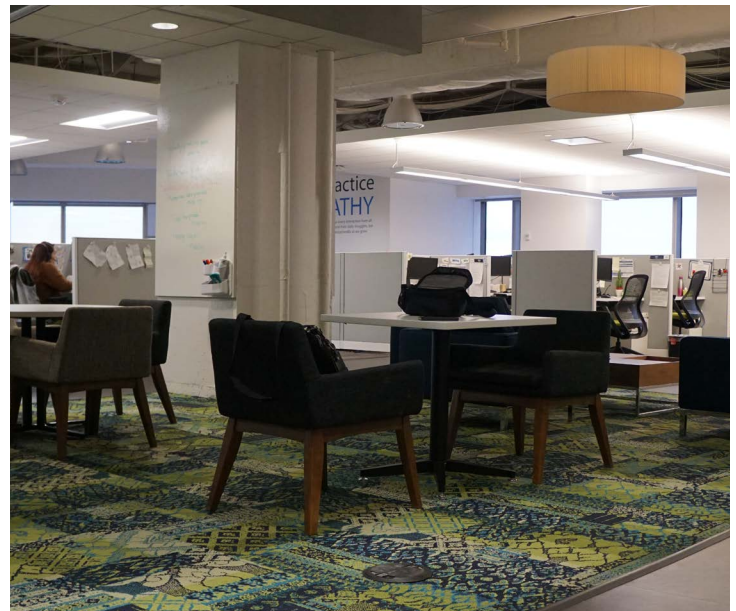


- 69 workstations (5x5)
- 21 seat training / conference room with retractable wall
- 4 Internal wired sidelights offices / focus rooms
- Kitchenette



**Centre Square
1500 Market Street
Philadelphia, PA**

27th Floor - 9,617 RSF



For More Information

Eric Pinchak
610.684.1993
epinchak@cresa.com

Jeff Baker
610.825.2292
jbaker@cresa.com

Three Logan Square, 1717 Arch Street, Suite 1305
Philadelphia, PA 19103