

World Exchange Plaza - Tower I

45 O'Connor St, Suite 1240
Ottawa, ON

Sublease Available

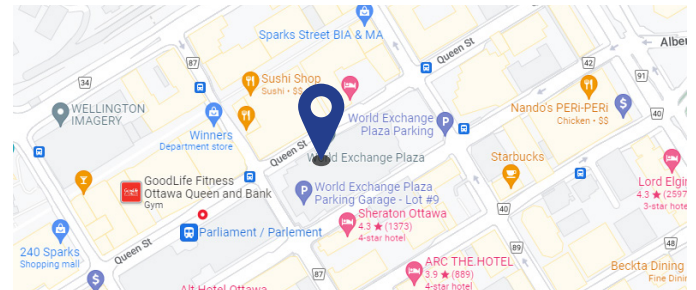
Space Profile

Premises	Suite 1240
RSF	5,190 RSF
Rental Rate	Contact Listing Broker
Availability	Immediate
Term	Until 07/31/2031
Building Class	A
Submarket	CBD
Parking	1.00/1,500 SF \$248.00/mo

Features

- Renowned office building just steps from Parliament Hill and Parliament LRT station
- Multi-level retail concourse and home to multitude of on-site amenities
- Suite features mix of open workspaces & enclosed offices, waiting area, large boardroom, kitchen and eating area/lounge
- Excellent views of Parliament Hill and Ottawa River

Map



For More Information

Zach Coakeley, Principal
Sales Representative
613.797.9224
zcoakeley@cresa.com

Even though obtained from sources deemed reliable, no warranty or representation, express or implied, is made as to the accuracy of the information herein, and it is subject to errors, omissions, change of price, rental or other conditions, withdrawal without notice, and to any special listing conditions imposed by our principals.



1750 Courtwood Cres, Suite 204, Ottawa, ON

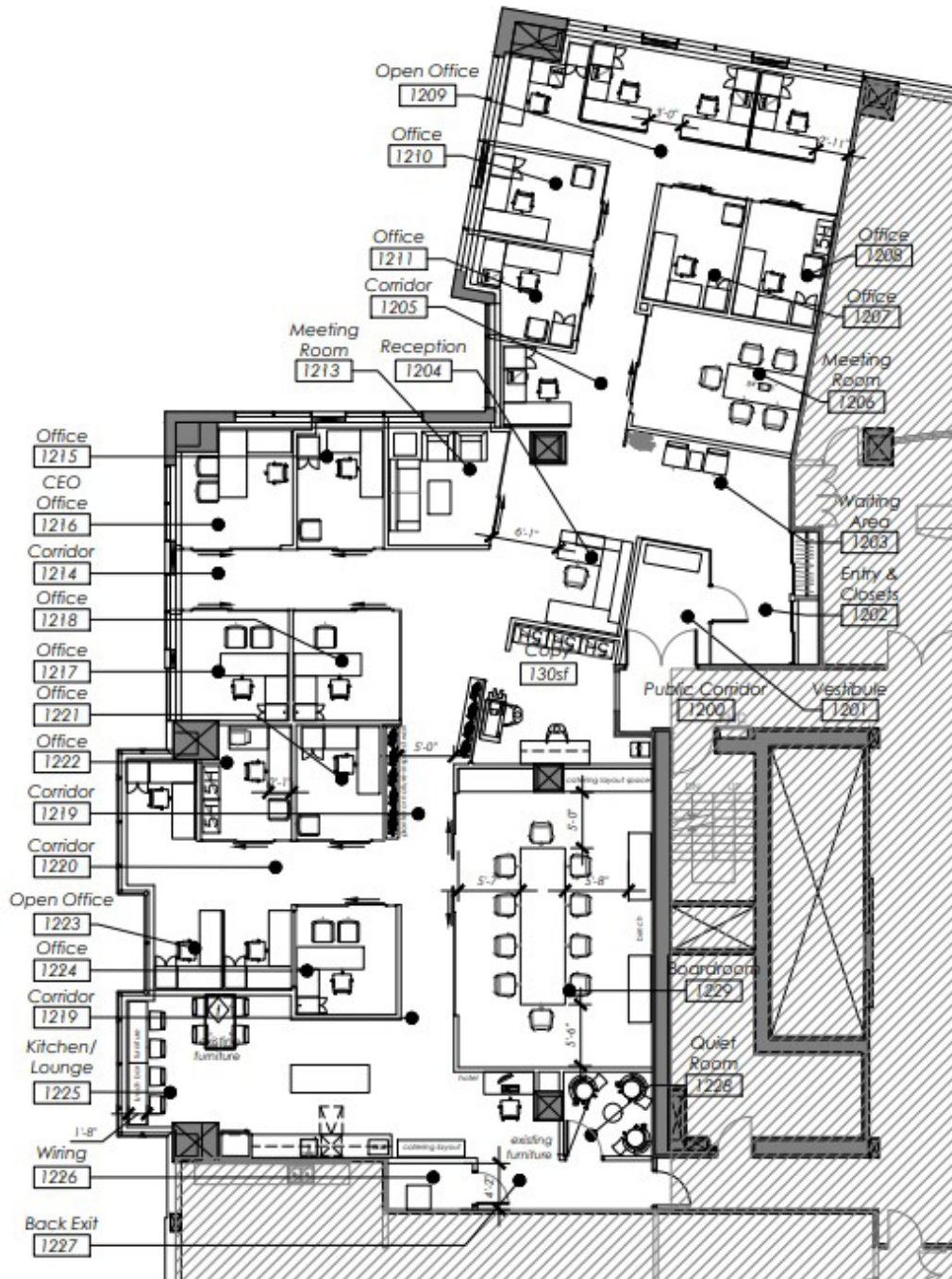
Virtually Tour this Listing
HERE



- Secure underground parking
- Bike storage
- Shoppers Drugmart, TD Bank in retail concourse
- Food court
- Public sitting area



Floor Plan - Approximate





World Exchange Plaza
45 O'Connor St
Suite 1240

12th Floor - 5,190 SF



For More Information

Zach Coakeley, Principal
Sales Representative
613.797.9224
zcoakeley@cresa.com