



**99 Metcalfe St, Suite 1203
Ottawa, ON
K1P 6L7**

**Sublease
Available**

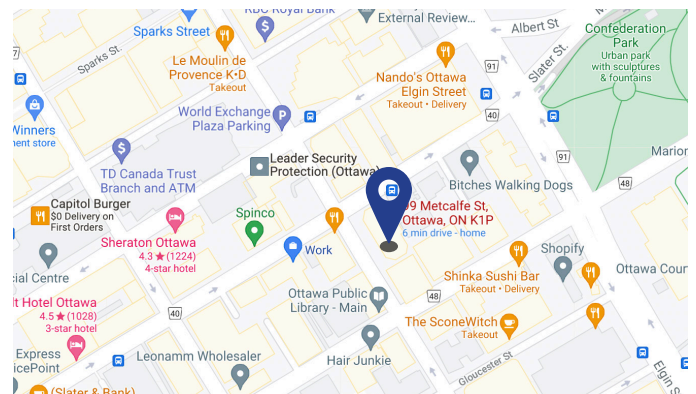
Space Profile

Premises	12th Floor
RSF	3,163 RSF
Rental Rate	Contact Listing Broker
Availability	Immediate
Term	October 31, 2024
Submarket	Central
Building Class	A
Additional Rent	\$21.27
Parking	3 indoor parking stalls

Features

- Located at the heart of downtown Ottawa, near Parliament Hill, and the Rideau Centre.
- Convenient access to public transit, just a 5 minute walk to Parliament LRT Station.
- Surrounded by great amenities, dining, and entertainment.
- In-suite kitchen and eating area
- A large spacious boardroom
- Excellent natural light
- Well-appointed professional office ideal for professional service firms (accountants, lawyers)
- Exclusive access to outdoor patio area

Map



For More Information

Cresa Ottawa
1750 Courtwood Cres.
Suite 204
Ottawa, ON K2C 2B5
cresa.com/ottawa



Justin Levine
613.862.4792
Broker, Senior Advisor
jlevine@cresa.com



Morgan Smith
613.240.9091
Sales Representative
msmith@cresa.com

Interested in getting a feel for the space?
[Click Here To Take A Virtual Tour](#)



99 Metcalfe St, Suite 1203
Ottawa, ON
K1P 6L7

Interior Photos



For More Information

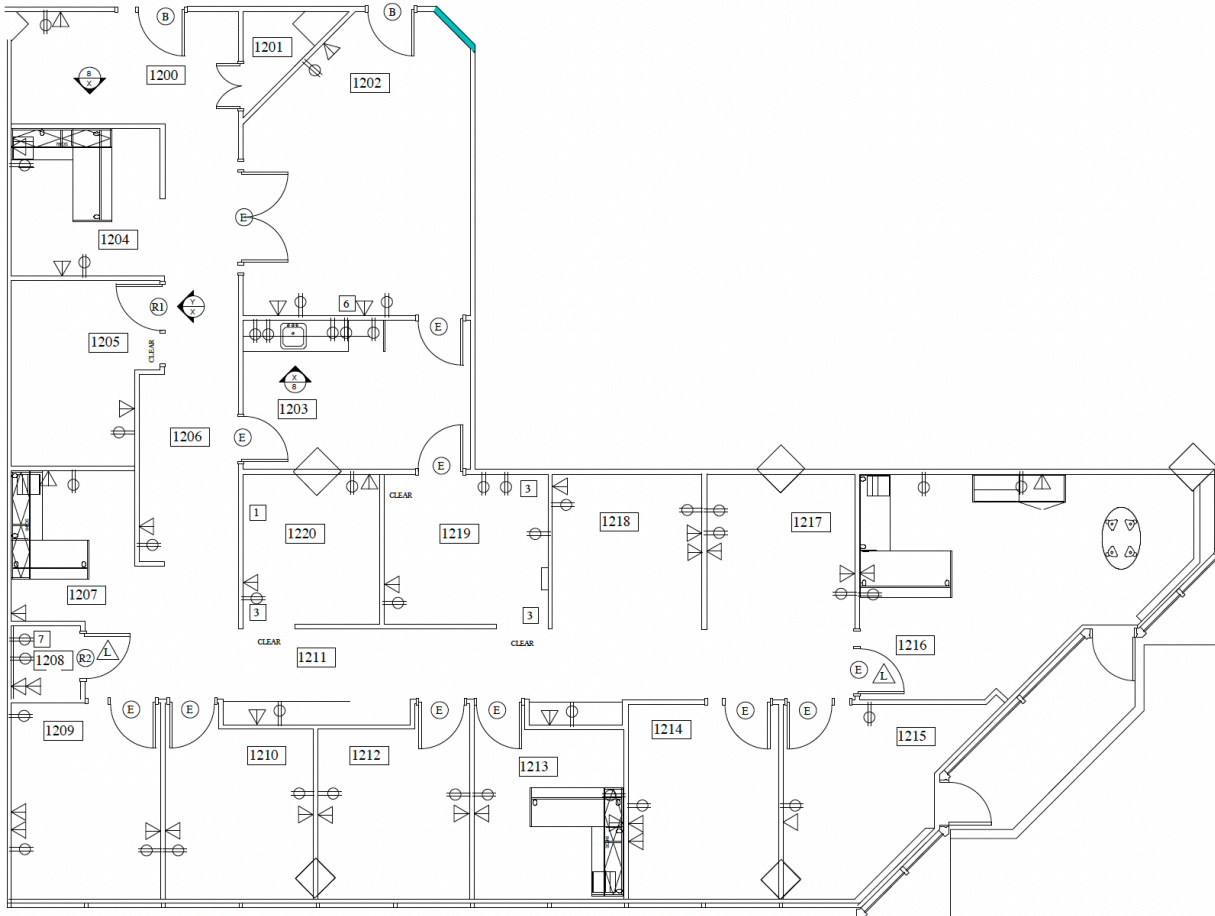
Justin Levine
613.862.4792
Broker, Senior Advisor
jlevine@cresa.com

Morgan Smith
613.240.9091
Sales Representative
msmith@cresa.com



99 Metcalfe St, Suite 1203
Ottawa, ON
K1P 6L7

Floor Plan - Approx. 3,000 RSF



For More Information

Cresa Ottawa
1750 Courtwood Cres.
Suite 204
Ottawa, ON K2C 2B5
cresa.com/ottawa



Justin Levine
613.862.4792
Broker, Senior Advisor
jlevine@cresa.com



Morgan Smith
613.240.9091
Sales Representative
msmith@cresa.com