



**1101 Baxter Road
Ottawa ON
K2C 3Z3**

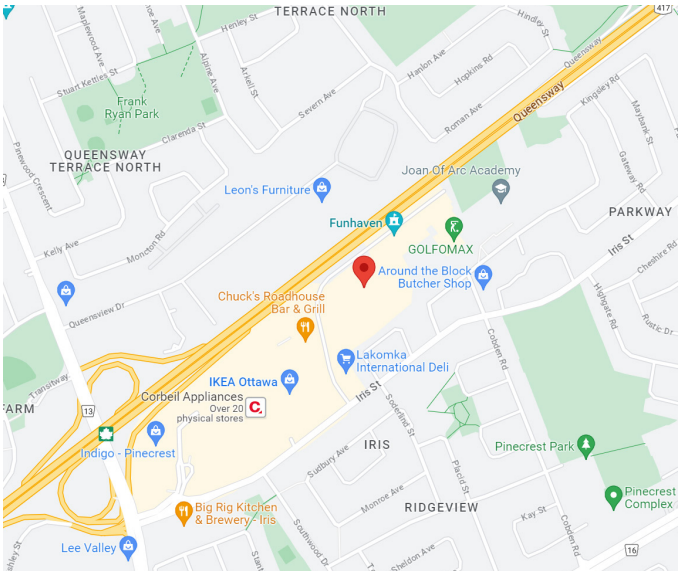
**Sublease
Available**

Space Profile

Premises	Ground Floor
RSF	22,310 RSF
Rental Rate	Contact Listing Broker
OpEx	\$ 15.76 PSF*
Availability	Immediate
Term	Until 12/31/2029
Submarket	West Central

*OpEx estimated for 2023.

Map



For More Information

Cresa
1750 Courtwood Cres
Suite 204
Ottawa, ON K2C 2B5
cresa.com/ottawa

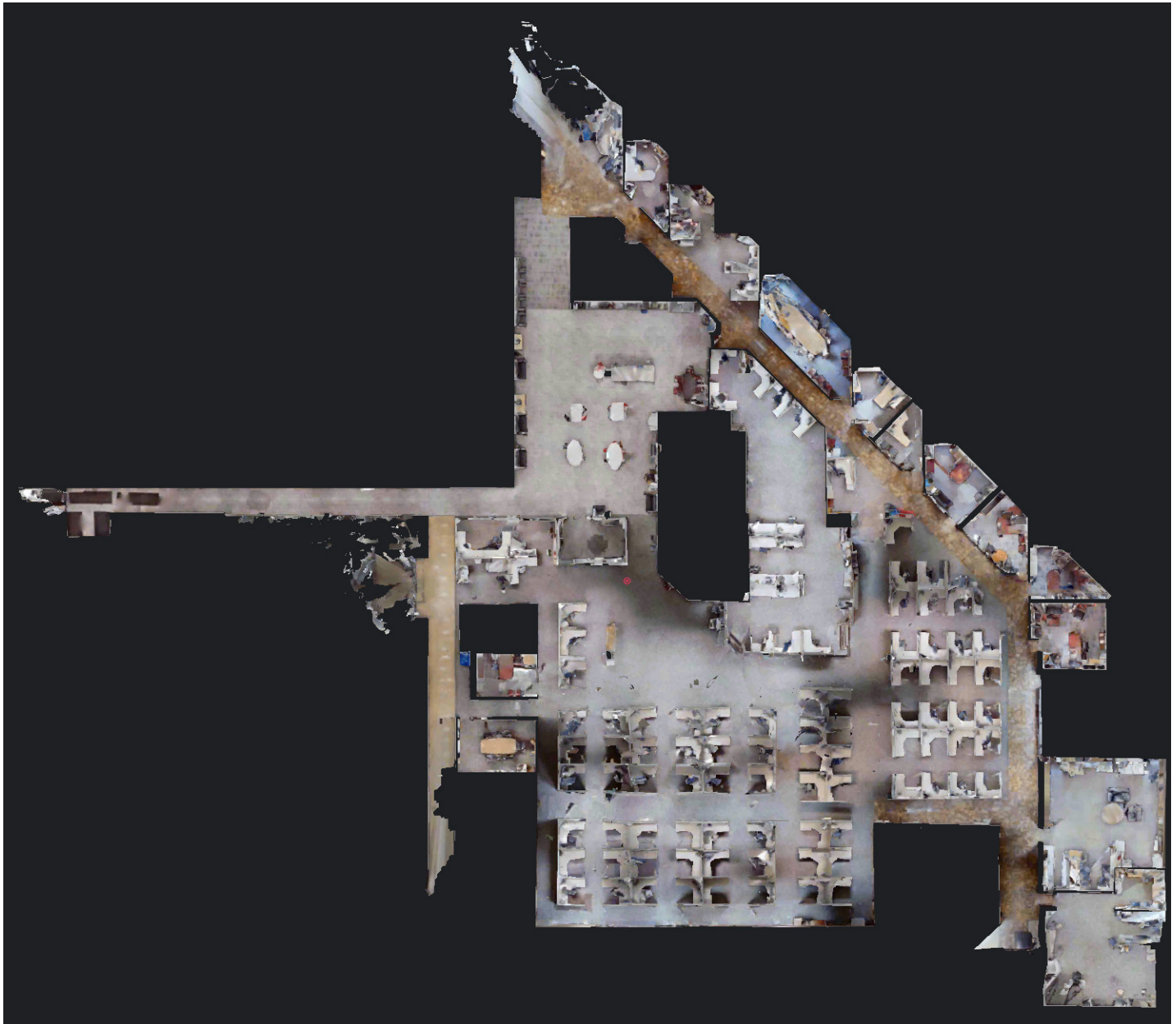
Jasmine Begin
Advisor
613.818.3555
jbegin@cresa.com

Virtual Tour: Office

Even though obtained from sources deemed reliable, no warranty or representation, express or implied, is made as to the accuracy of the information herein, and it is subject to errors, omissions, change of price, rental or other conditions, withdrawal without notice, and to any special listing conditions imposed by our principals.



Floor Plan

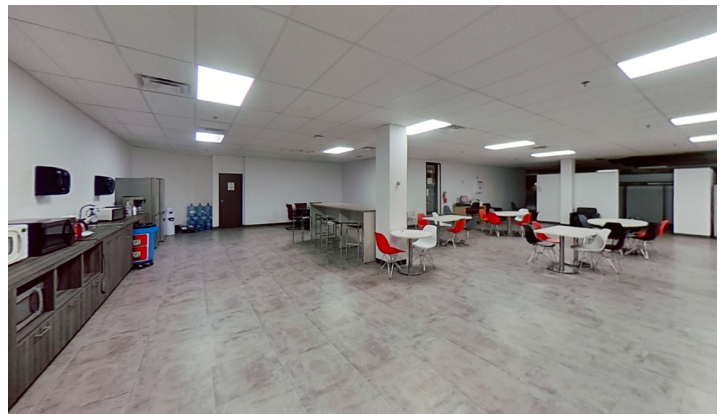


For More Information

Cresa
1750 Courtwood Cres
Suite 204
Ottawa, ON K2C 2B5
cresa.com/ottawa

Jasmine Begin
Advisor
613.818.3555
jbegin@cresa.com

Photos



For More Information

Jasmine Begin
Advisor
613.818.3555
jbegin@cresa.com