



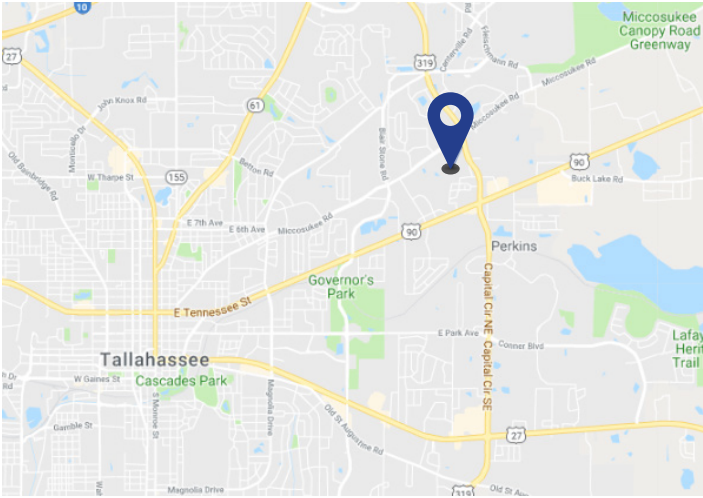
**1801 Miccosukee Commons Drive
Tallahassee, FL 32308**

For Lease

Space Profile

Premises	Entire 2nd Floor
RSF	18,475 RSF
Rental Rate	\$18.00 Modified Gross (net of electric & janitorial)
Availability	September 5th, 2019
Building Class	Class B Masonry Office Building
Submarket	NE Tallahassee
Built	2002
Parking	3.38/1,000 RSF

Map



Features

- Two story building totaling 36,951 RSF with atrium entrance and elevator
- Entire second floor available - 18,475 RSF
- First floor lobby/reception area available to second floor tenant
- Multiple private offices, two kitchens, reception and large conference room
- 3.38/1,000 RSF on-site parking ratio - reserved parking available
- Not separately metered - sublessor pays the prorated share of electric

For More Information

Craig Castor
 407.409.8690 Direct
 407.493.6366 Cell
 ccastor@cresa.com

Cresa
 221 NE Ivanhoe Blvd., Suite 330
 Orlando, FL 32804
 cresa.com/orlando

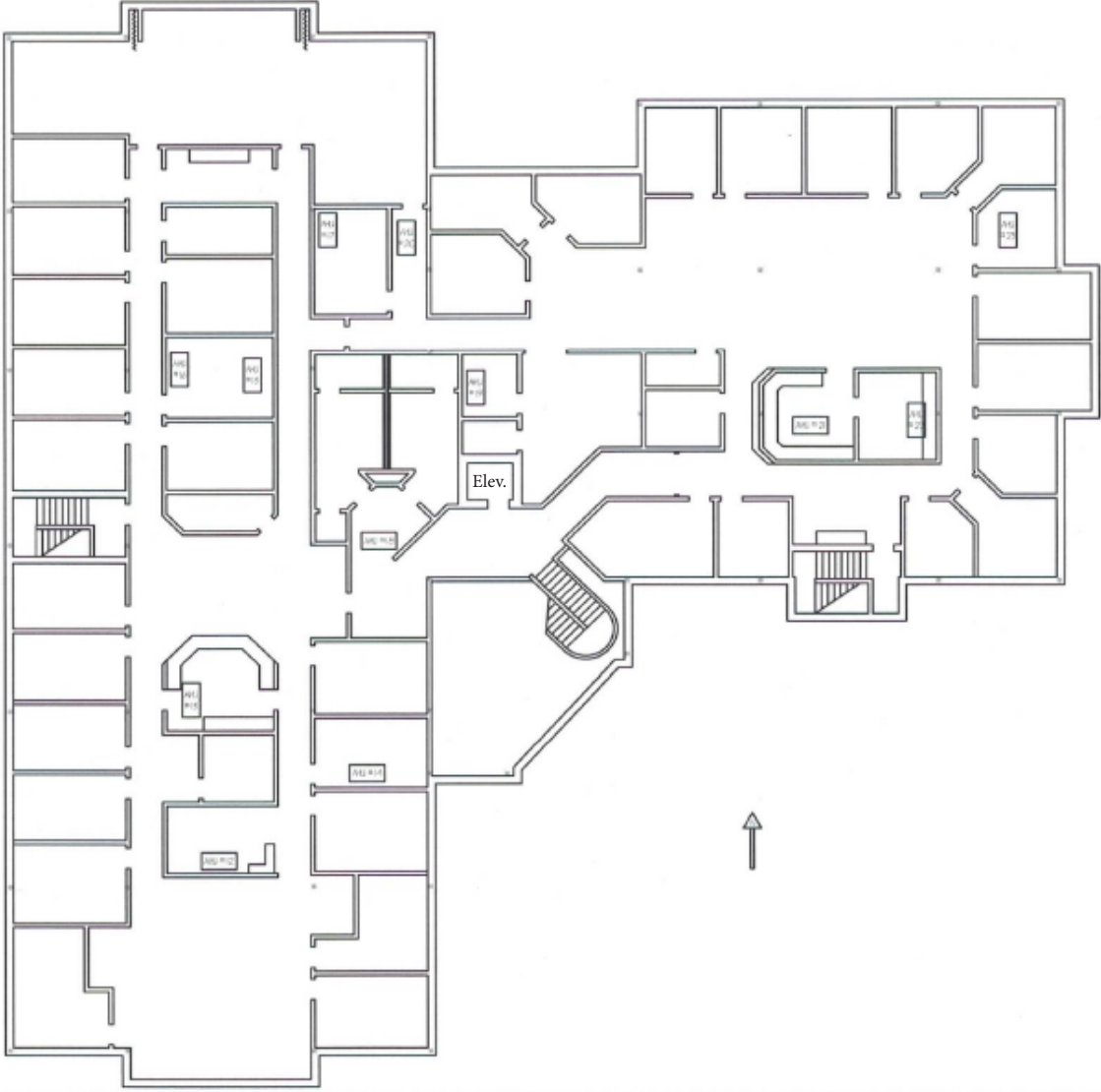
Even though obtained from sources deemed reliable, no warranty or representation, express or implied, is made as to the accuracy of the information herein, and it is subject to errors, omissions, change of price, rental or other conditions, withdrawal without notice, and to any special listing conditions imposed by our principals.





1801 Miccosukee Commons Drive
Tallahassee, FL 32308

Entire 2nd Floor - 18,475 RSF



Aerial View



For More Information

Craig Castor
407.409.8690 Direct
407.493.6366 Cell
ccastor@cresa.com

Cresa
221 NE Ivanhoe Blvd., Suite 330
Orlando, FL 32804
cresa.com/orlando