

Lease

NEW CONSTRUCTION! READY NOW! Prime Industrial Park

3603 N 222nd Street
Omaha, Nebraska 68222

Space Profile:

Premises	1 Floor Flex
RSF	5,070 - 25,351 SF
Rental Rate	\$9.50 NNN
Availability	Immediate
Term	Negotiable
Ceiling Height	19 Feet
Zoning	CC-FF-MCC
Lot Size	5.73 Acres
Overhead Doors	7 (12'x12')

Ready for your business. Ready to meet your business needs. Brand new construction on West Maple Road. Located in one of Omaha's fastest growing sub-markets. Commercial heavy rated concrete parking lots, 12x12 doors and 5+ acres of available outdoor storage are just some of the features that will help your business run efficiently and grow. Contact Eric for a tour.

Contact:



Eric Rose

402.764.9453

erose@cresa.com

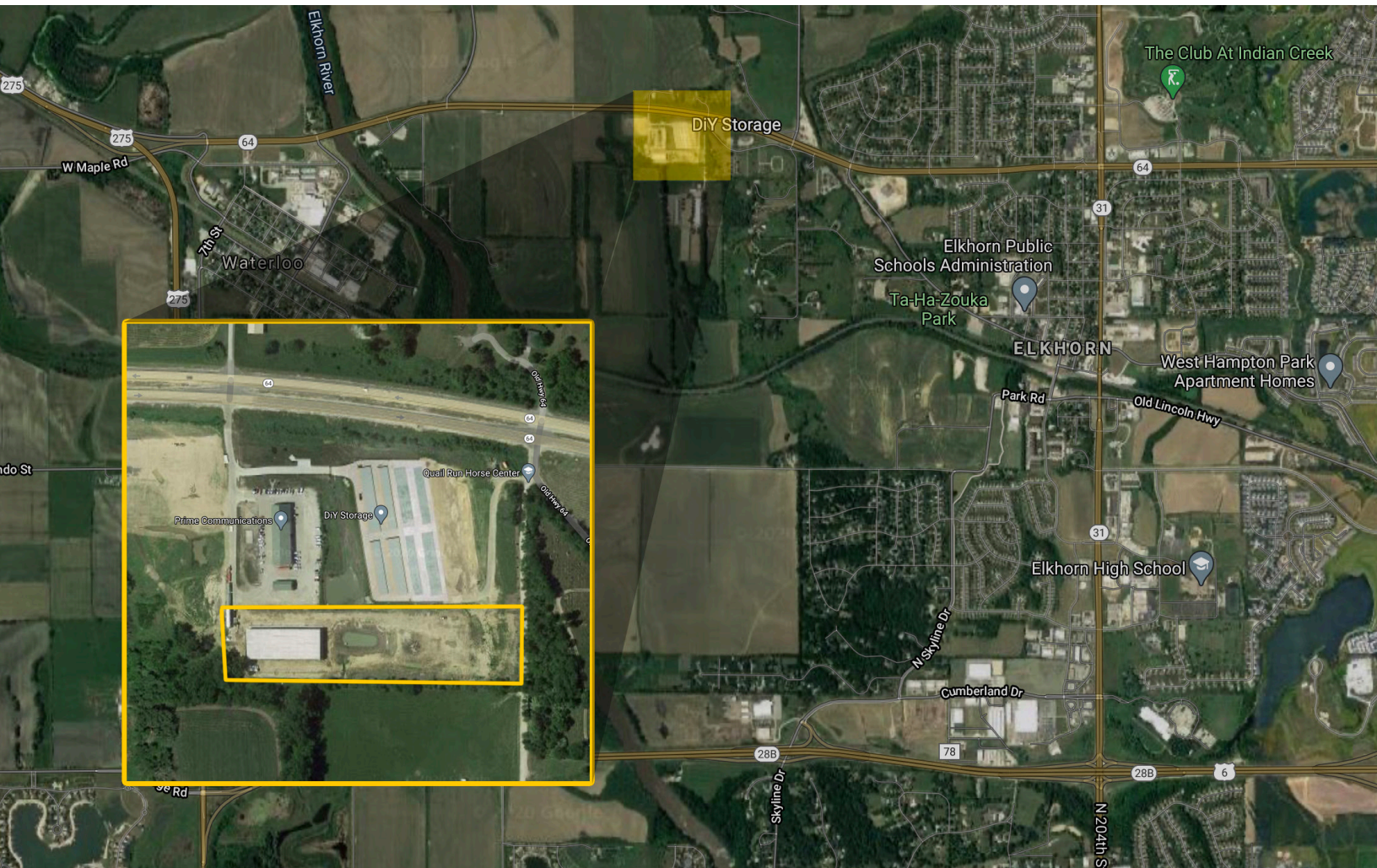
cresa



Prime Industrial Park

3603 N 222nd Street

Omaha, Nebraska 68222



cresa

Cresa © 2019. All rights reserved. The information contained in this document has been obtained from sources believed reliable. While Cresa does not doubt its accuracy, Cresa has not verified it and makes no guarantee, warranty, or representation about it. It is your responsibility to independently confirm its accuracy and completeness. Any projections, opinions, assumptions or estimates used are for example only and do not represent the current or future performance of the property. The value of this transaction to you depends on tax and other factors which should be evaluated by your tax, financial and legal advisors. You and your advisors should conduct a careful, independent investigation of the property to determine to your satisfaction the suitability of the property for your needs.



Prime Industrial Park

3603 N 222nd Street
Omaha, Nebraska 68222

Contact:



Eric Rose
402.764.9453
erose@cresa.com



cresa ::::

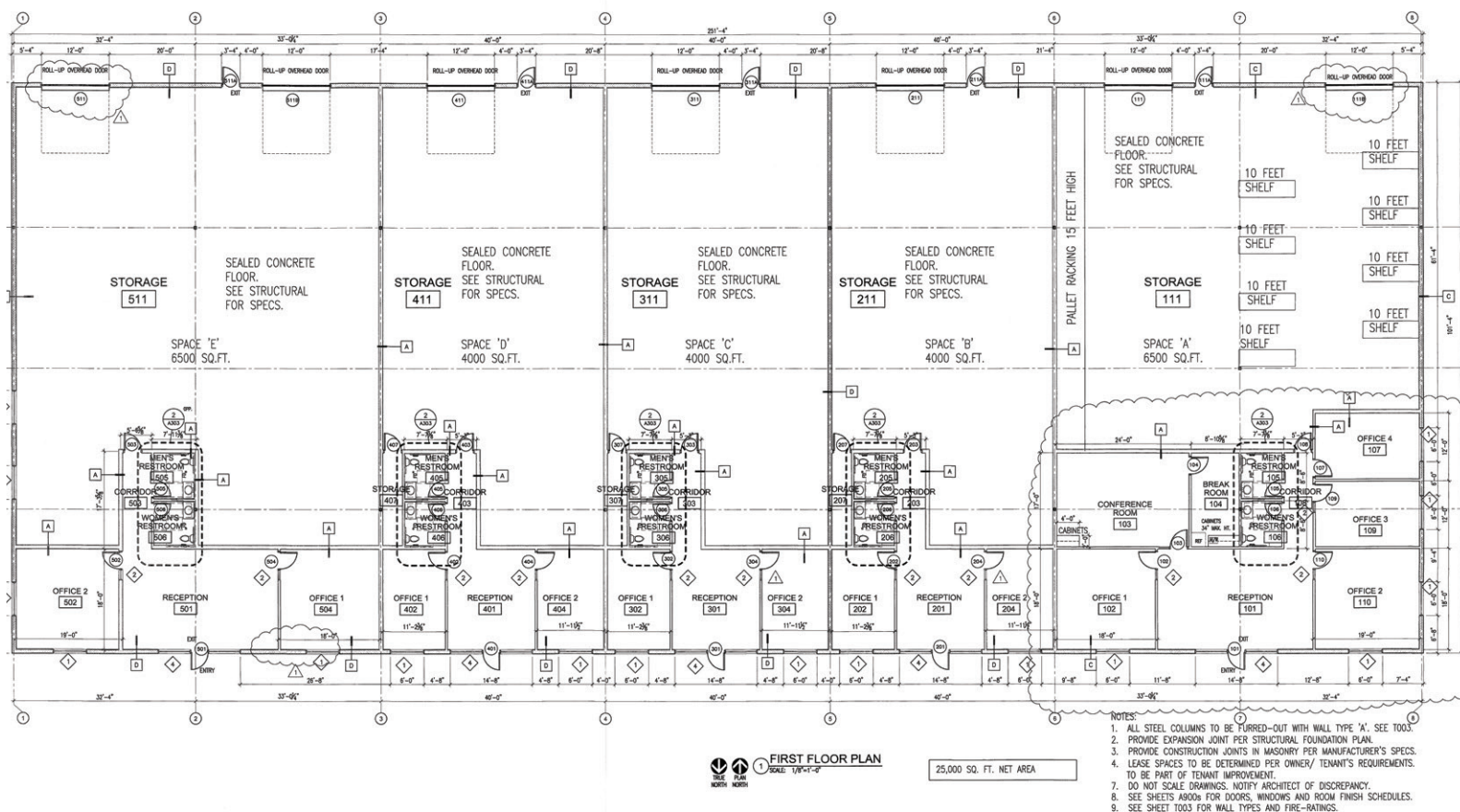
Cresa © 2019. All rights reserved. The information contained in this document has been obtained from sources believed reliable. While Cresa does not doubt its accuracy, Cresa has not verified it and makes no guarantee, warranty, or representation about it. It is your responsibility to independently confirm its accuracy and completeness. Any projections, opinions, assumptions or estimates used are for example only and do not represent the current or future performance of the property. The value of this transaction to you depends on tax and other factors which should be evaluated by your tax, financial and legal advisors. You and your advisors should conduct a careful, independent investigation of the property to determine to your satisfaction the suitability of the property for your needs.



Prime Industrial Park

3603 N 222nd Street
Omaha, Nebraska 68222

Conceptual Floor Plan



cresa

Cresa © 2019. All rights reserved. The information contained in this document has been obtained from sources believed reliable. While Cresa does not doubt its accuracy, Cresa has not verified it and makes no guarantee, warranty, or representation about it. It is your responsibility to independently confirm its accuracy and completeness. Any projections, opinions, assumptions or estimates used are for example only and do not represent the current or future performance of the property. The value of this transaction to you depends on tax and other factors which should be evaluated by your tax, financial and legal advisors. You and your advisors should conduct a careful, independent investigation of the property to determine to your satisfaction the suitability of the property for your needs.