

# Land for Sale, Industrial Park Land

Industrial Park Land | W. David Drive & Broadwell Avenue | York, NE 68467



### Site Overview

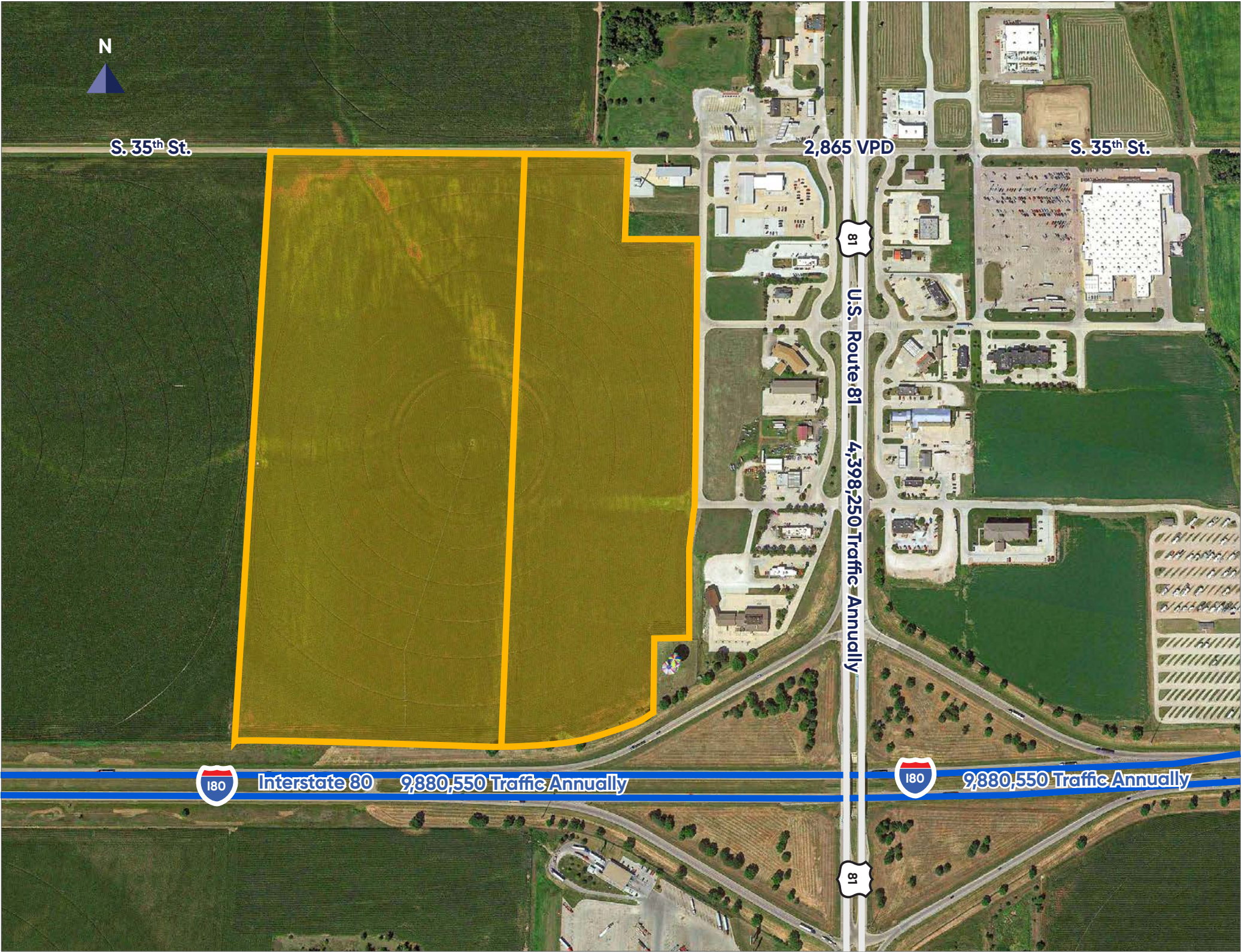
Listing Price	\$2,727,750
Premises	109.11 Acres
Zoning	Industrial
Daily Traffic Flow	39,120
County	York County
Build to Suit	Yes
Utilities	To site

### Industrial Overview

Ideally located, this site is excellent for a distribution, LTL, or manufacturing company needing one-day-drive access to many of the country’s major metropolitan areas including Kansas City, Denver, Chicago, Minneapolis, and Milwaukee among others. Site is available for development including build-to-suit possibilities.

### Highlights

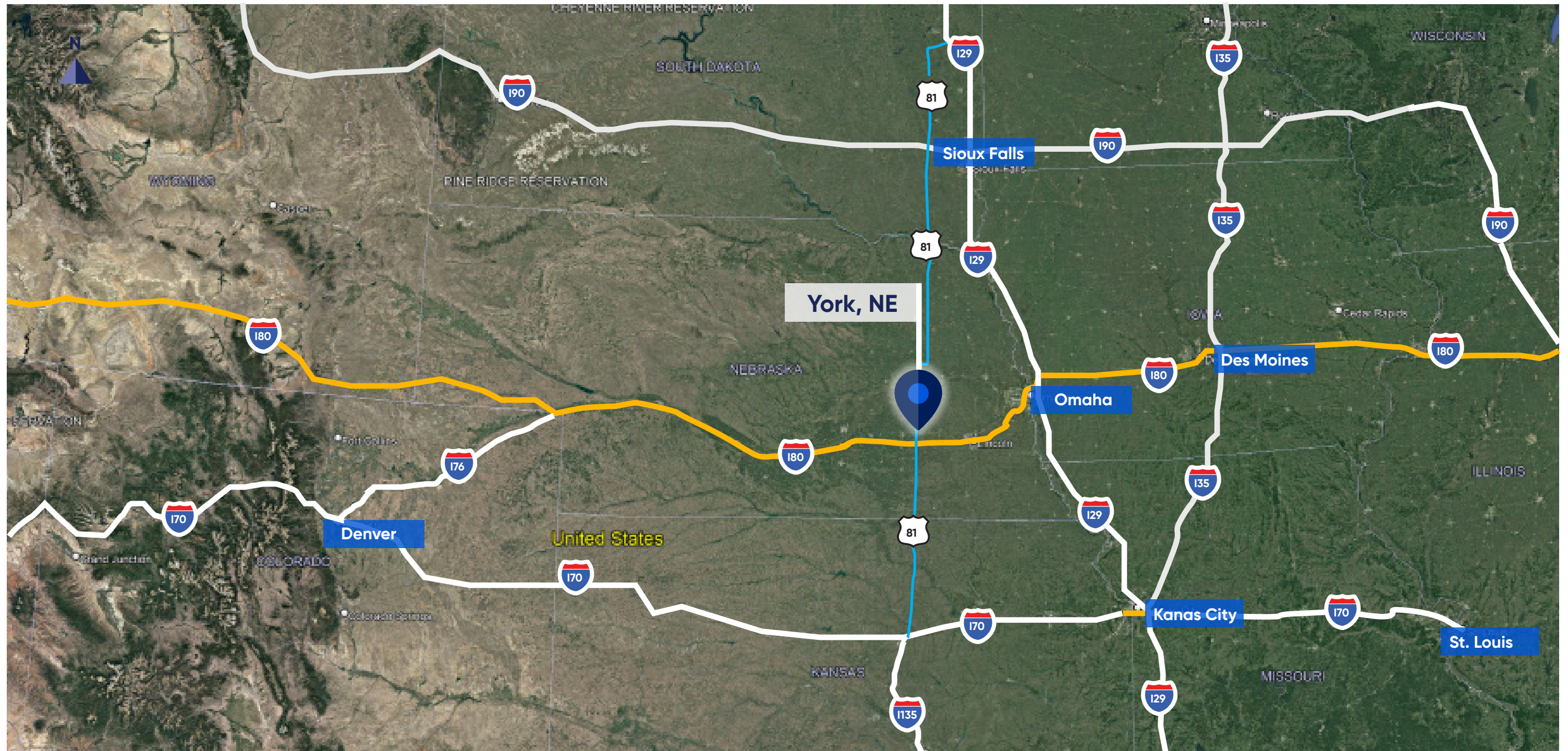
- Located right off Interstate 80 exit
- Great visibility from Interstate 80 Hwy. 81 (55 miles per hour)
- Majority of the nation is within a two-day drive
- Site has immediate access to Hwy. 81 (55 miles per hour)





**Industrial Park Land** | W. David Drive & Broadwell Avenue | York, NE 68467

# York, Nebraska





# Land for Sale, Industrial Park Land

Industrial Park Land | W. David Drive & Broadwell Avenue | York, NE 68467



## York, Nebraska

York, NE - Area Retailer Map





# Land for Sale, Industrial Park Land

Industrial Park Land | W. David Drive & Broadwell Avenue | York, NE 68467



## York, Nebraska

### York, NE, US-81 Traffic Counts

AADT Year	2018
Total AADT	12,050
Truck AADT	1,455

### York, NE, I-80 Traffic Counts

AADT Year	2018
Total AADT	27,070
Truck AADT	8,365

### Contact



**Erick Tjarks**  
312.221.6374  
etjarks@cresa.com



**Kirk Thompson**  
712.870.4915  
kithompson@cresa.com



**Johnny Dorn**  
402.764.9455  
jdorn@cresa.com

### York 10-Hour Drive Radius - US Map

