

# 80 BROAD STREET

## Sublease Available



### Space Profile

<b>Premises</b>	Partial 12th Floor, Suite 1200
<b>Size</b>	3,640 RSF
<b>Rental Rate</b>	Negotiable
<b>Term</b>	Thru April 29th, 2024

### Features

- Reception Area
- 6 Private Offices (5 Windowed)
- 1 Large Windowed Conference Area
- Wet Pantry



VIEW THE  
VIRTUAL TOUR



### For More Information, please contact

**Thomas P. Sullivan**  
212.687.4314 - direct  
914.374.6098 - Cell  
TSullivan@cresa.com

**Brian McAvey**  
212.687.0534 - direct  
203.767.6831 - Cell  
BMcAvey@cresa.com

Even though obtained from sources deemed reliable, no warranty or representation, express or implied, is made as to the accuracy of the information herein, and it is subject to errors, omissions, change of price, rental or other conditions, withdrawal without notice, and to any special listing conditions imposed by our principals.



1633 Broadway, 22nd Floor, New York, NY 10019





# 80 BROAD STREET

Partial 12th Floor | 3,640 RSF



**For More Information, please contact**

**Thomas P. Sullivan**  
212.687.4314 - direct  
914.374.6098 - Cell  
TSullivan@cresa.com

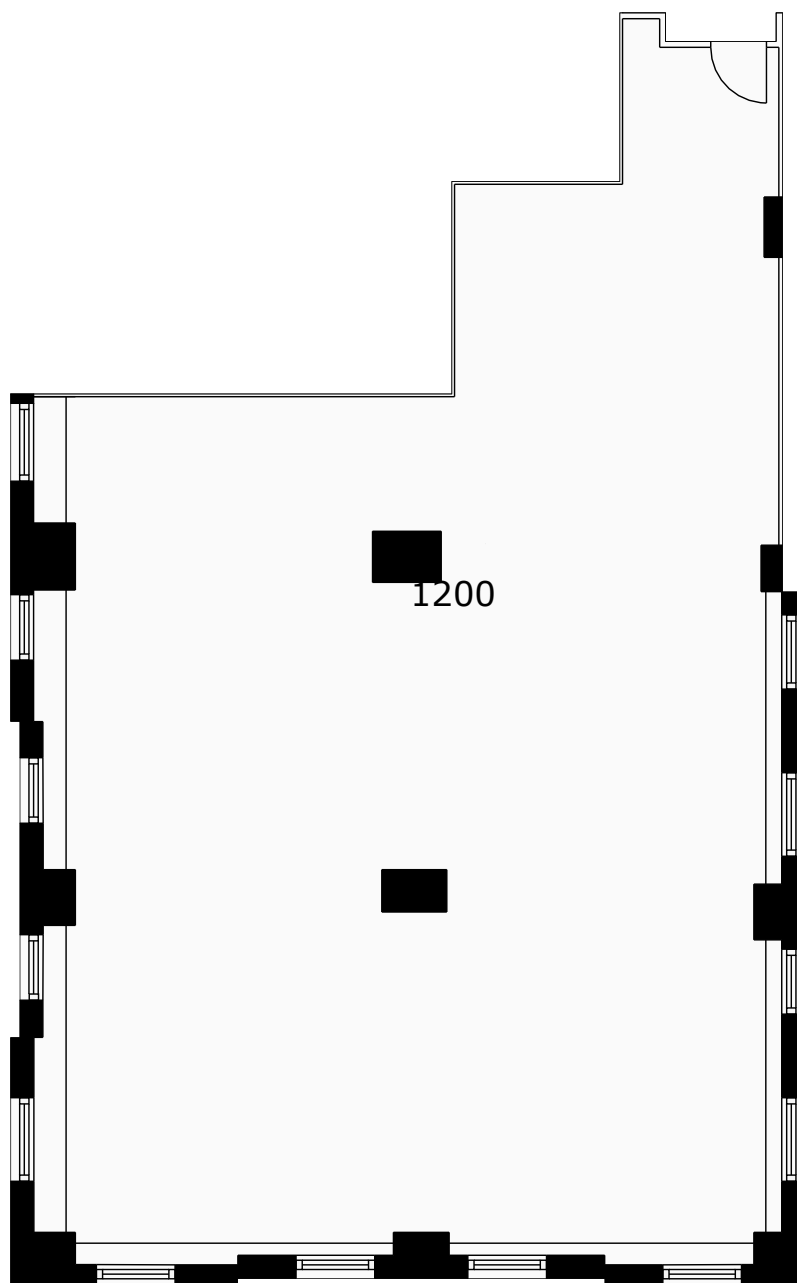
**Brian McAvey**  
212.687.0534 - direct  
203.767.6831 - Cell  
BMcAvey@cresa.com

**Cresa**  
1633 Broadway  
22nd Floor  
New York, NY 10019



# 80 BROAD STREET

Partial 12th Floor | 3,640 RSF



**For More Information, please contact**

**Thomas P. Sullivan**  
212.687.4314 - direct  
914.374.6098 - Cell  
TSullivan@cresa.com

**Brian McAvey**  
212.687.0534 - direct  
203.767.6831 - Cell  
BMcAvey@cresa.com

**Cresa**  
1633 Broadway  
22nd Floor  
New York, NY 10019