

50 WEST 23RD STREET

Sublease Available

Space Profile

Partial 5th Unit A: **21,741 RSF**
Partial 5th Unit B: **9,789 RSF**
Entire 6th: **31,210 RSF**

Premises

Possession

P5 Unit A: December 1, 2022
P5 Unit B: September 1, 2020
E6: November 1, 2020

Rental Rate

Upon Request

Term

Through December 30th, 2026

Features

- High-End Creative Installation with Exposed Ceiling, Glass Fronts
- Seating for Over 200 Persons Per Floor
- Floors can be Leased Separately
- Private Gym on the 6th Floor



For More Information, Please Contact

Richard I. Selig
Managing Principal
212.687.4159
RSelig@cresa.com

Michael Okun
Principal
212.687.1958
MOkun@cresa.com

Even though obtained from sources deemed reliable, no warranty or representation, express or implied, is made as to the accuracy of the information herein, and it is subject to errors, omissions, change of price, rental or other conditions, withdrawal without notice, and to any special listing conditions imposed by our principals.

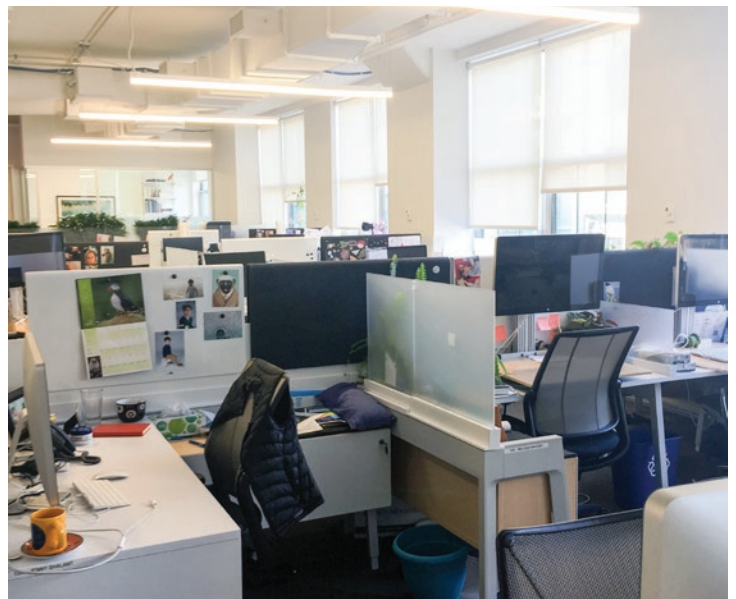
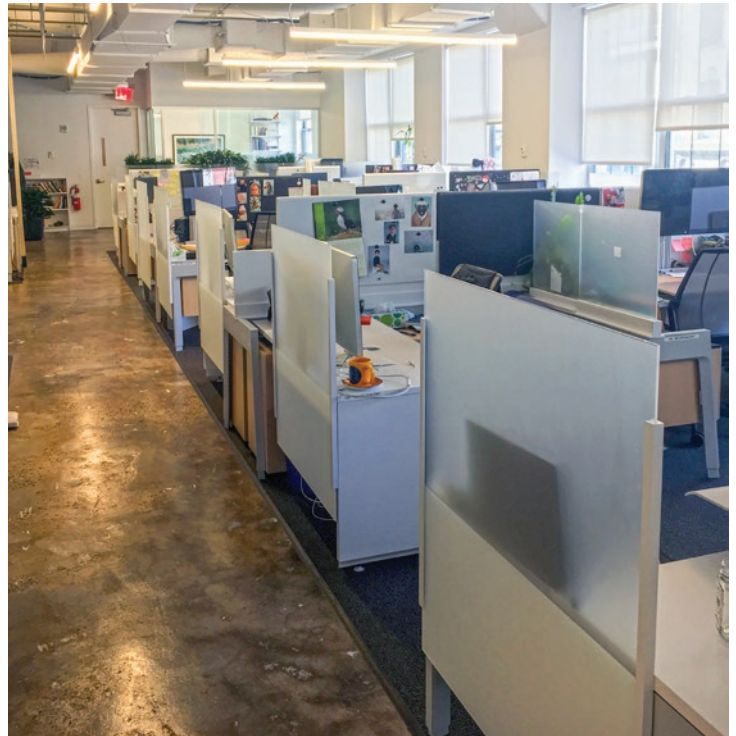


1633 Broadway, 22nd Floor, New York, NY 10019



50 WEST 23RD STREET

Partial 5th Floor



For More Information, Please Contact

Richard I. Selig
Managing Principal
212.687.4159
RSelig@cresa.com

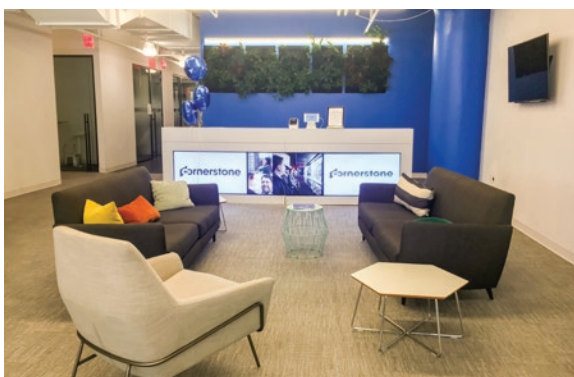
Michael Okun
Principal
212.687.1958
MOkun@cresa.com

Cresa
1633 Broadway
22nd Floor
New York, NY 10019



50 WEST 23RD STREET

Entire 6th Floor



For More Information, Please Contact

Richard I. Selig
Managing Principal
212.687.4159
RSelig@cresa.com

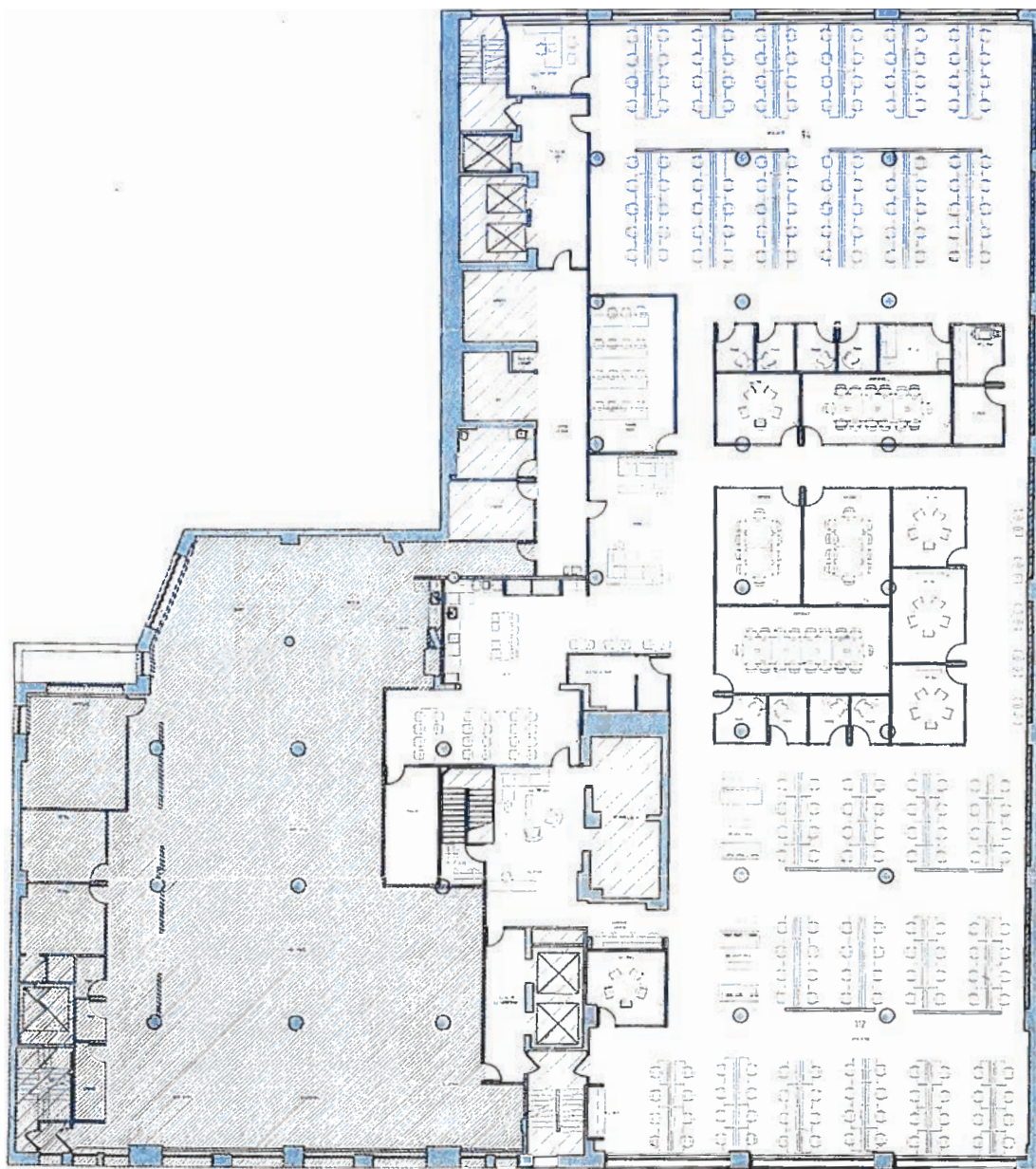
Michael Okun
Principal
212.687.1958
MOkun@cresa.com

Cresa
1633 Broadway
22nd Floor
New York, NY 10019



50 WEST 23RD STREET

Partial 5th Floor: Unit A



For More Information, Please Contact

Richard I. Selig
Managing Principal
212.687.4159
RSelig@cresa.com

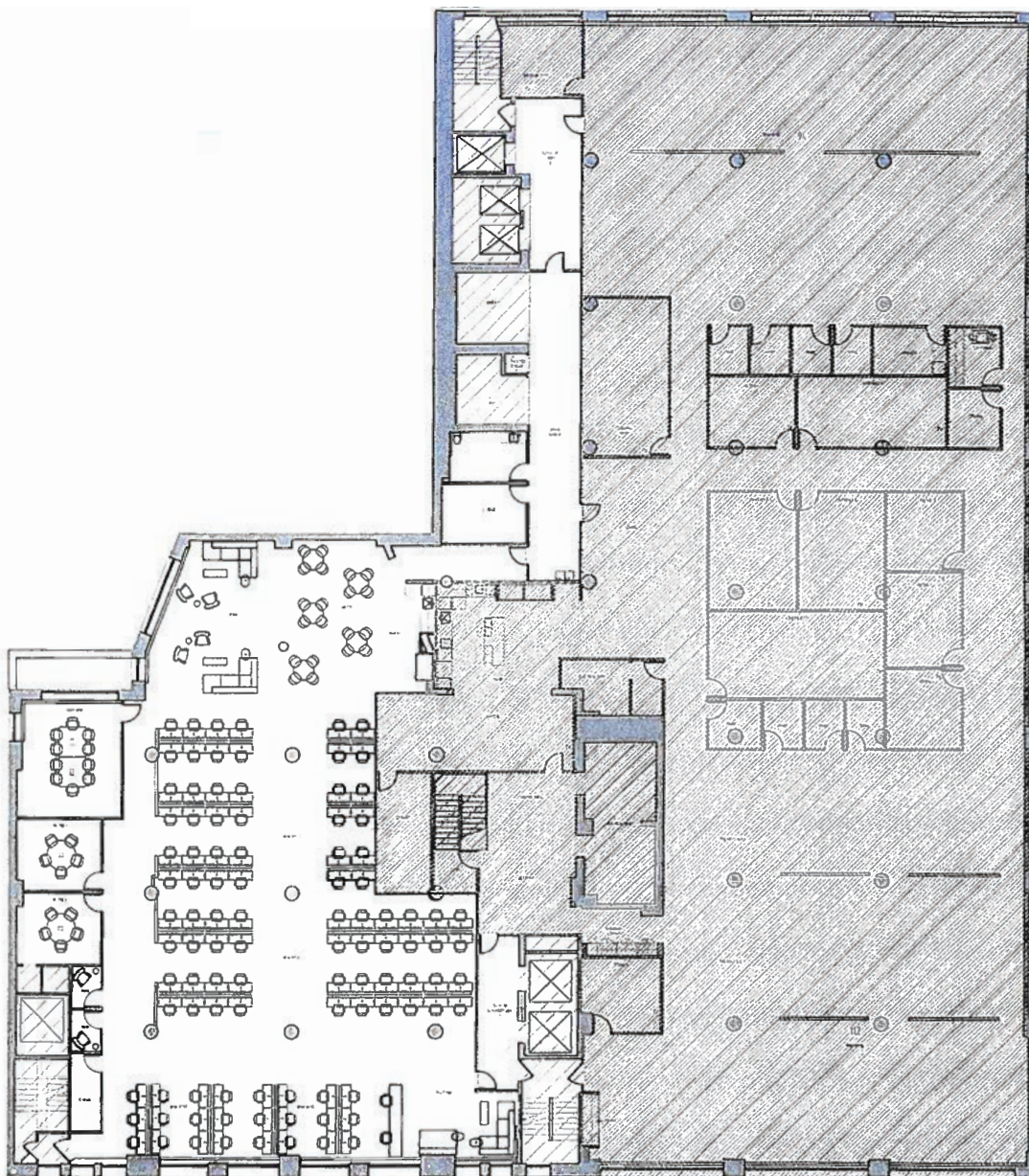
Michael Okun
Principal
212.687.1958
MOkun@cresa.com

Cresa
1633 Broadway
22nd Floor
New York, NY 10019



50 WEST 23RD STREET

Partial 5th Floor: Unit B



For More Information, Please Contact

Richard I. Selig
Managing Principal
212.687.4159
RSelig@cresa.com

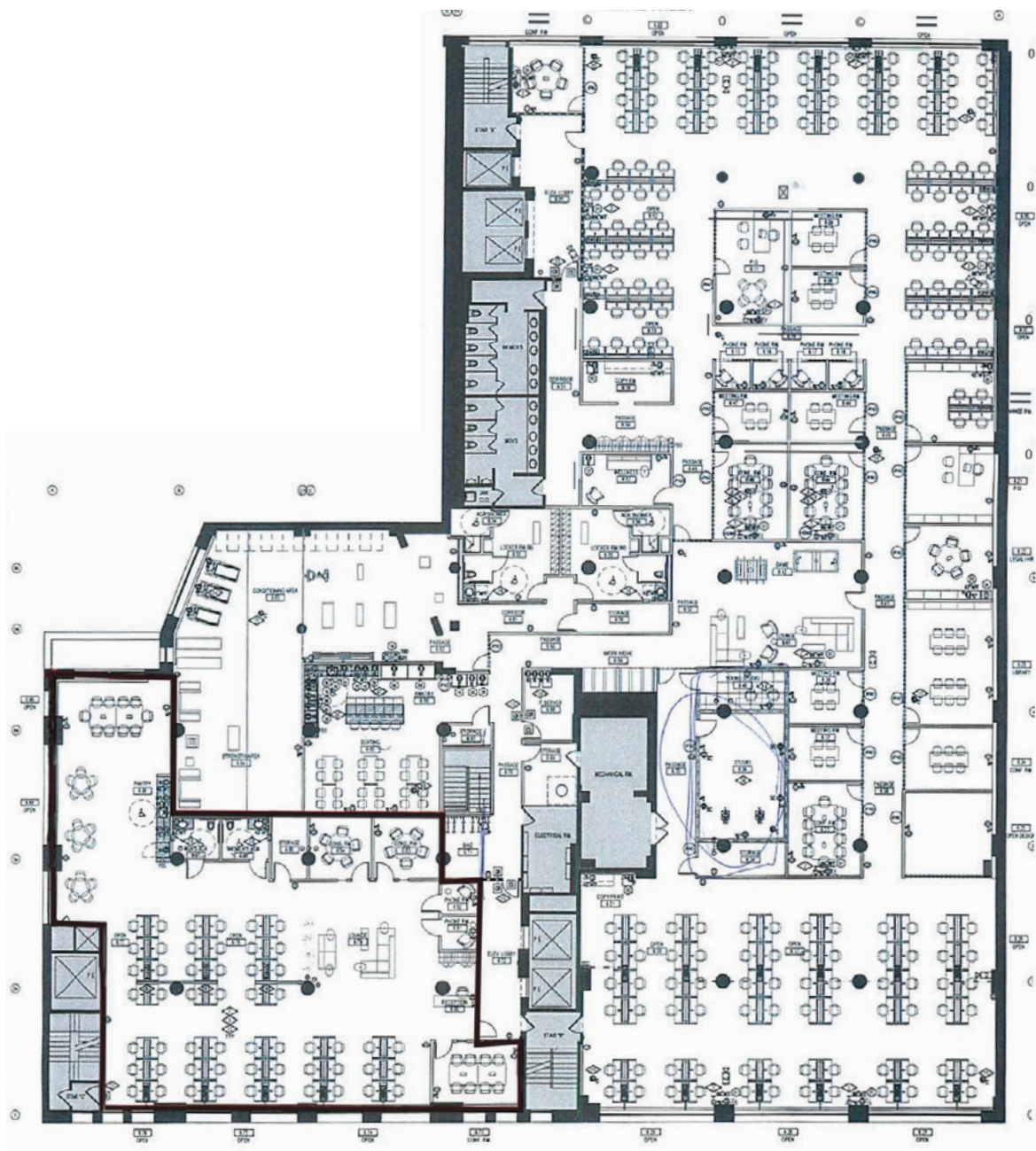
Michael Okun
Principal
212.687.1958
MOkun@cresa.com

Cresa
1633 Broadway
22nd Floor
New York, NY 10019



50 WEST 23RD STREET

Entire 6th Floor



For More Information, Please Contact

Richard I. Selig
Managing Principal
212.687.4159
RSelig@cresa.com

Michael Okun
Principal
212.687.1958
MOkun@cresa.com

Cresa
1633 Broadway
22nd Floor
New York, NY 10019