

# 2 PARK AVENUE

BETWEEN 32ND & 33RD STREETS

## Sublease Available



### Space Profile

<b>Premises</b>	Partial 3rd Floor
<b>Size</b>	8,376 RSF
<b>Rental Rate</b>	Upon Request
<b>Availability</b>	Immediate
<b>Term</b>	9/15/2026

### Features

- Financially Stable Sublessor
- Furniture & Phones Available
- 4 Windowed Offices
- Conference Room
- Pantry
- Eat-In Kitchen
- Large Open Area

### Building Features

- Close Proximity to Penn Station and Grand Central Station
- On-Site Parking
- Cleaning Included



### For More Information, Please Contact

**Thomas P. Sullivan**  
212.687.4314 - Direct  
914.374.6098 - Mobile  
TSullivan@cresa.com

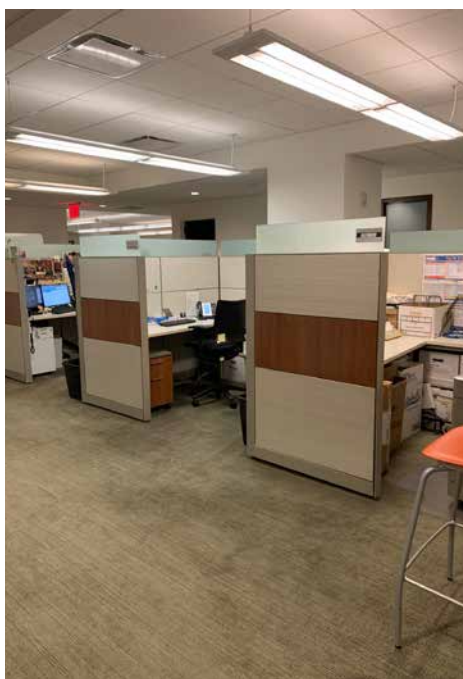
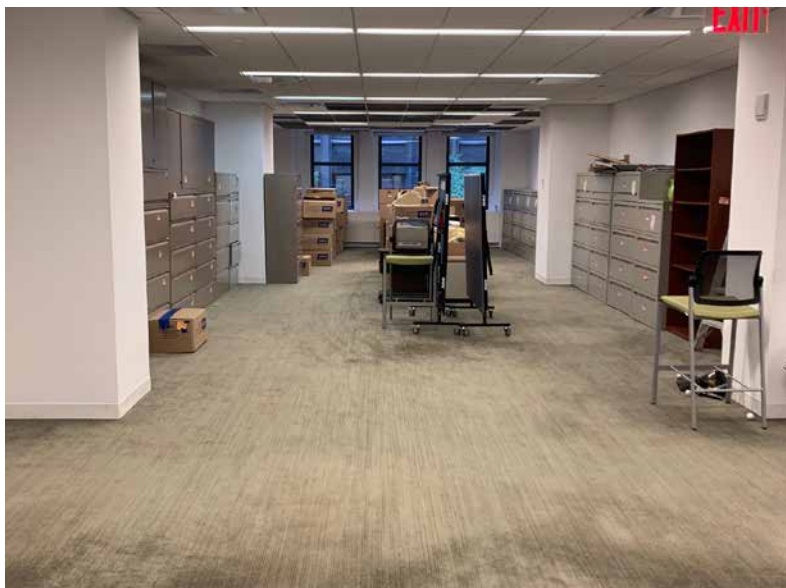
Even though obtained from sources deemed reliable, no warranty or representation, express or implied, is made as to the accuracy of the information herein, and it is subject to errors, omissions, change of price, rental or other conditions, withdrawal without notice, and to any special listing conditions imposed by our principals.



1633 Broadway, 22nd Floor, New York, NY 10019



# 2 PARK AVENUE



## For More Information, Please Contact

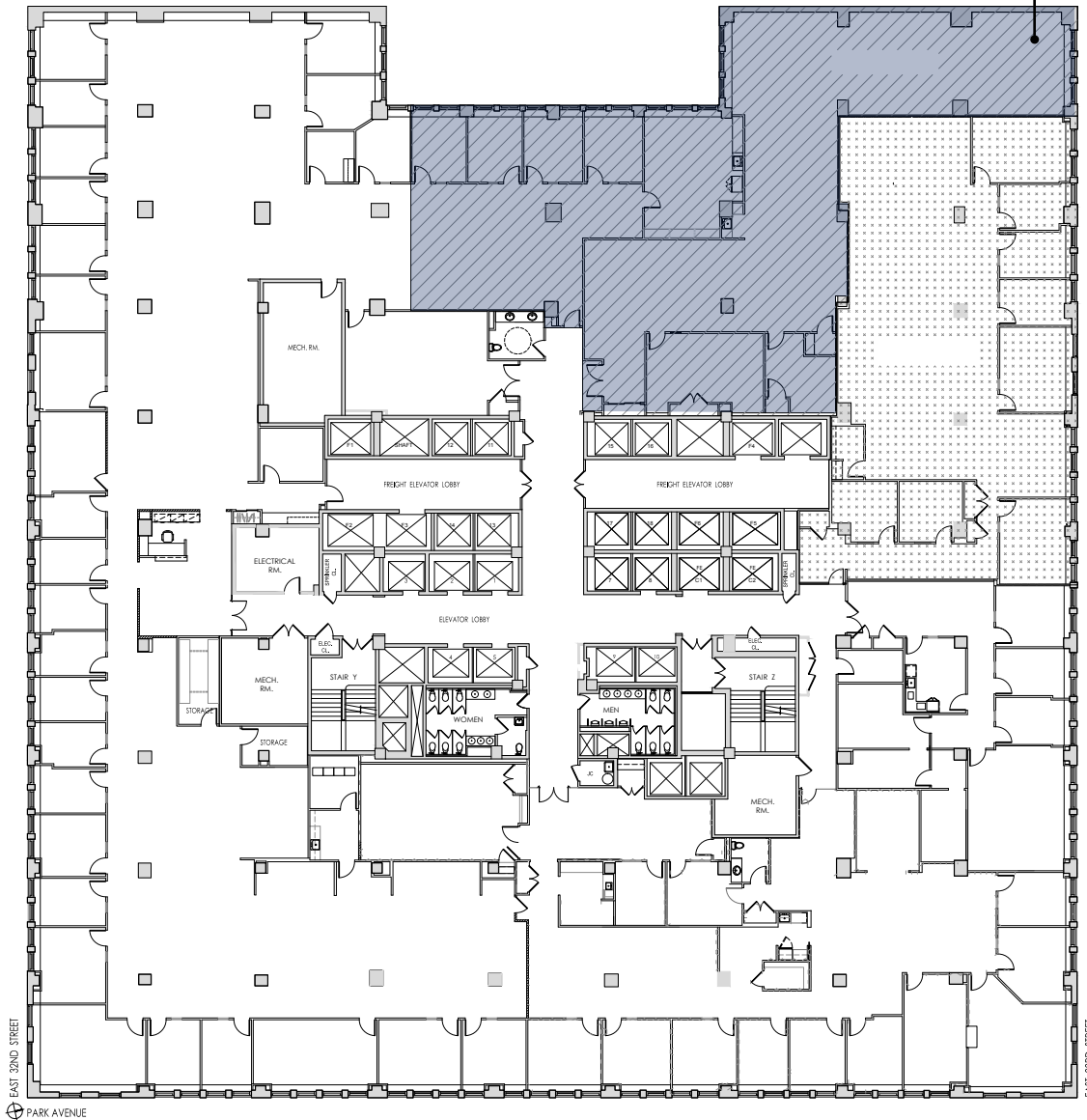
**Thomas P. Sullivan**  
212.687.4314 - Direct  
914.374.6098 - Mobile  
TSullivan@cresa.com

**Cresa**  
1633 Broadway  
22nd Floor  
New York, NY 10019

# 2 PARK AVENUE

## Partial 3rd | 8,376 RSF

- 4 Windowed Offices
- Conference Room
- Pantry
- Eat-In Kitchen
- Large Open Area



### For More Information, Please Contact

**Thomas P. Sullivan**  
 212.687.4314 - Direct  
 914.374.6098 - Mobile  
 TSullivan@cresa.com

**Cresa**  
 1633 Broadway  
 22nd Floor  
 New York, NY 10019