

# 256 WEST 38TH STREET

## Sublease Available



### Space Profile

Entire 5th Floor: 8,610 RSF  
Entire 6th Floor: 8,610 RSF  
**Total: 17,220 RSF**

### Premises

### Rental Rate

Upon Request

### Availability

Arranged

### Term

Through June 30, 2024

### Electric

Submetered

### Features

- Delivered “As Is” with FFE available
- Full Floors can be leased individually
- Located centrally between Penn Station, Port Authority, and Times Square
- Featuring the all new timber frames, Integrated technology and media walls, healthcare vignettes, custom order manufacturing and graphics



VIEW THE **360°** VIRTUAL TOUR



### For More Information, Please Contact

**Nicholas Markel**  
212.687.4501  
NMarkel@cresa.com

**Peter Sabesan**  
212.687.4518  
PSabesan@cresa.com

Even though obtained from sources deemed reliable, no warranty or representation, express or implied, is made as to the accuracy of the information herein, and it is subject to errors, omissions, change of price, rental or other conditions, withdrawal without notice, and to any special listing conditions imposed by our principals.





# 256 WEST 38TH STREET



## For More Information, Please Contact

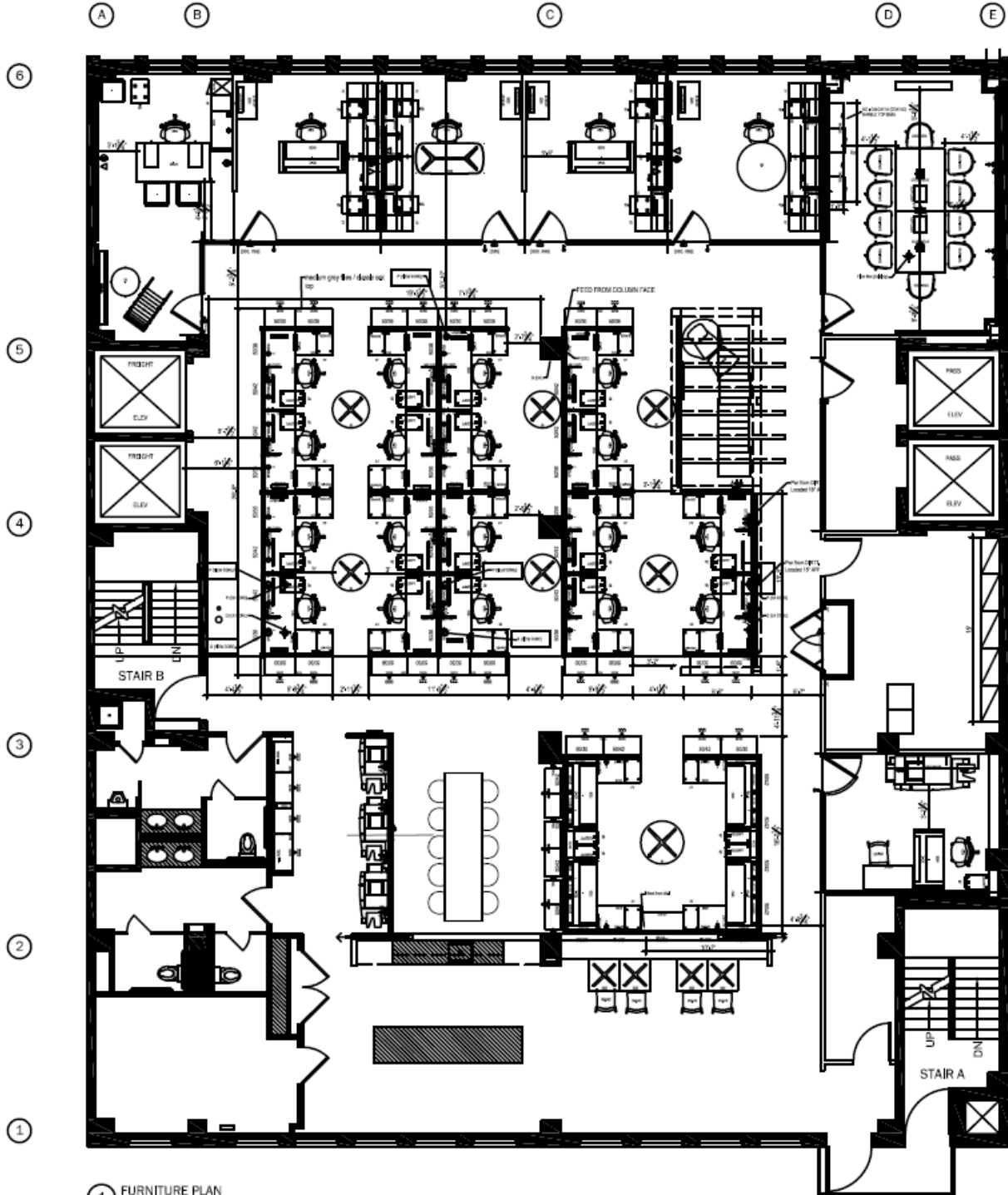
**Nicholas Markel**  
212.687.4501  
NMarkel@cresa.com

**Peter Sabesan**  
212.687.4518  
PSabesan@cresa.com

**Cresa**  
1633 Broadway  
22nd Floor  
New York, NY 10019

# 256 WEST 38TH STREET

Entire 5th Floor: 8,610 RSF



For More Information, Please Contact

Nicholas Markel  
212.687.4501  
NMarkel@cresa.com

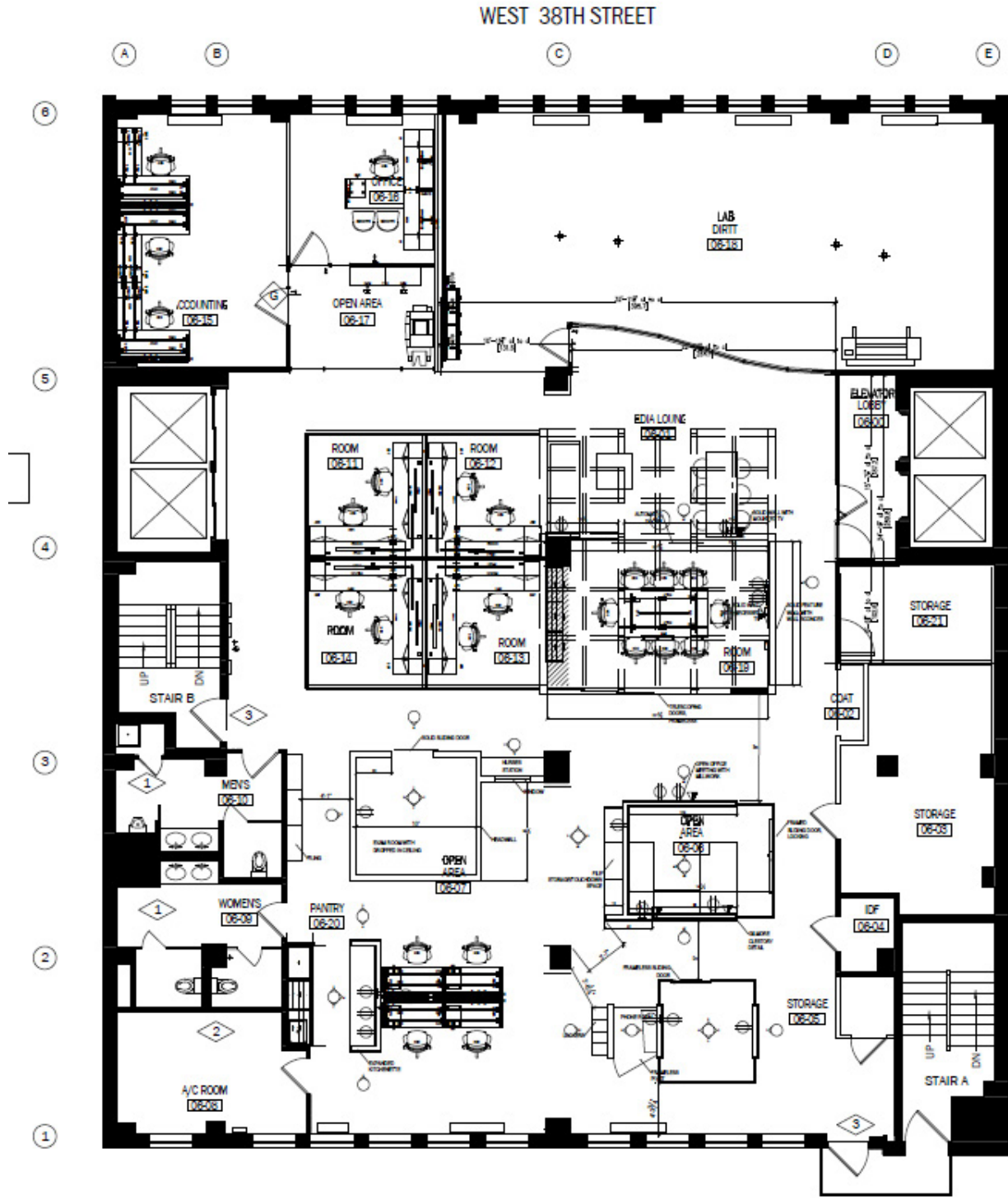
Peter Sabesan  
212.687.4518  
PSabesan@cresa.com

Cresa  
1633 Broadway  
22nd Floor  
New York, NY 10019



# 256 WEST 38TH STREET

Entire 6th Floor: 8,610 RSF



For More Information, Please Contact

Nicholas Markel  
212.687.4501  
NMarkel@cresa.com

Peter Sabesan  
212.687.4518  
PSabesan@cresa.com

Cresa  
1633 Broadway  
22nd Floor  
New York, NY 10019