

245 WEST 17TH STREET

Sublease Available

Space Profile

Premises	Entire 2nd Floor: 11,592 RSF
Possession	Immediate
Asking Rent	Upon Request
Term	2-3 Years

Features

- Full Floor Presence
- High End Finishes
- Plug and Play
- Open Layout With Benching for Approximately 80
- 4 – 8 Person Conference Rooms
- Café Style Kitchen
- 11' Open Ceilings



VIEW THE VIRTUAL TOUR **360°**



For More Information, Please Contact

Richard I. Selig
Managing Principal
212.687.4159
RSelig@cresa.com

Barry C. Spagna
Vice President
212.687.4294
BSpagna@cresa.com

Even though obtained from sources deemed reliable, no warranty or representation, express or implied, is made as to the accuracy of the information herein, and it is subject to errors, omissions, change of price, rental or other conditions, withdrawal without notice, and to any special listing conditions imposed by our principals.



1633 Broadway, 22nd Floor, New York, NY 10019



245 WEST 17TH STREET

Entire 2nd Floor: 11,592 RSF



For More Information, Please Contact

Richard I. Selig
Managing Principal
212.687.4159
RSelig@cresa.com

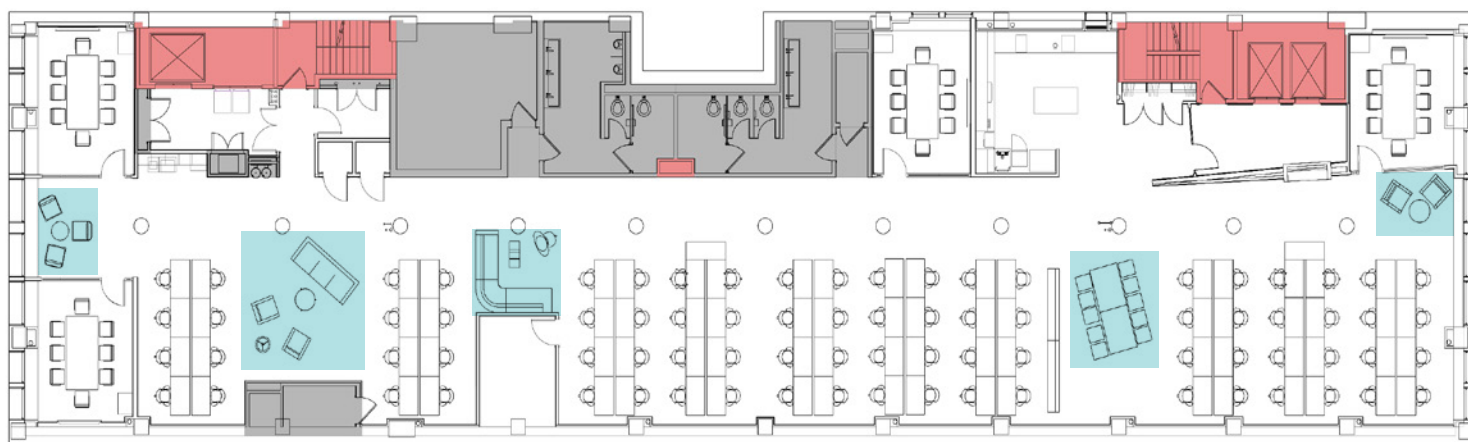
Barry C. Spagna
Vice President
212.687.4294
BSpagna@cresa.com

Cresa
1633 Broadway
22nd Floor
New York, NY 10019



245 WEST 17TH STREET

Entire 2nd Floor: 11,592 RSF



Collaboration/Lounge Areas
(Ancillary furniture not included)



For More Information, Please Contact

Richard I. Selig
Managing Principal
212.687.4159
RSelig@cresa.com

Barry C. Spagna
Vice President
212.687.4294
BSpagna@cresa.com

Cresa
1633 Broadway
22nd Floor
New York, NY 10019