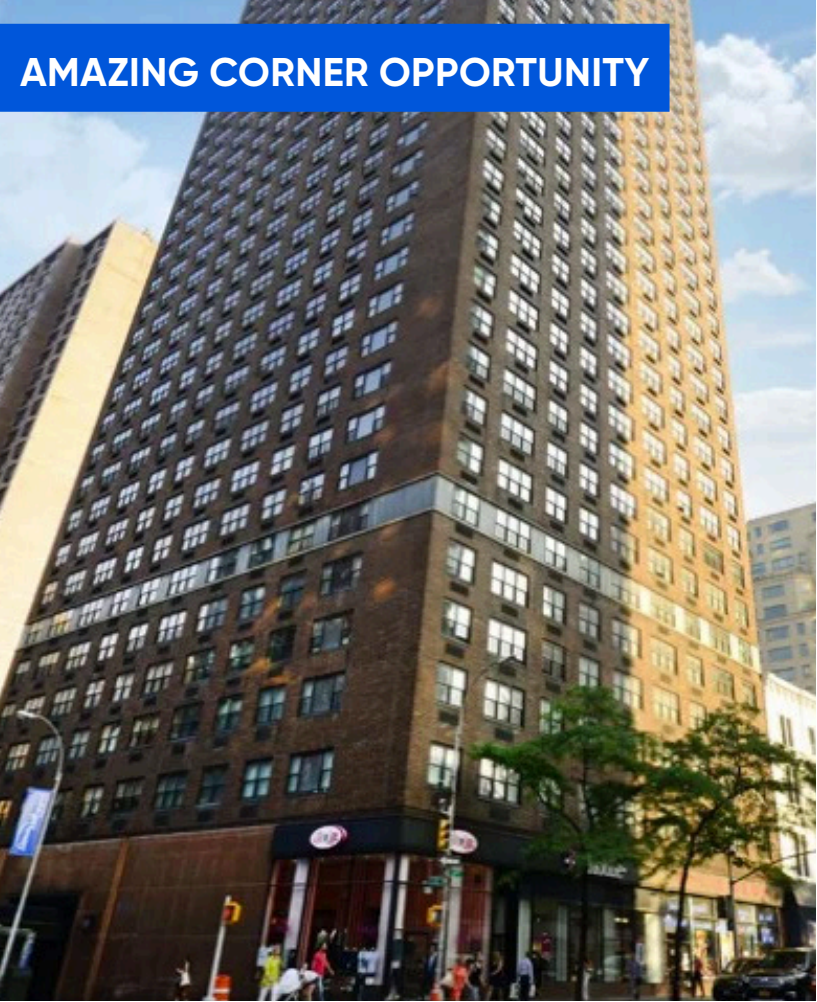


# 1243 THIRD AVENUE

## Retail Space Available

### AMAZING CORNER OPPORTUNITY



### Space Profile

<b>Premises</b>	Partial Ground Floor & Non-Selling Basement
<b>Size</b>	PG: 1,750 RSF LL: 1,770 RSF
<b>Possession</b>	Immediate
<b>Rental Rate</b>	Upon Request
<b>Term</b>	10 Years

### Features

- High Volume of Daily Traffic:  
14,000 on East 72nd Street  
26,000 on Third Avenue
- Frontage: 23' on Third Ave and 24' on 72nd
- Non-Selling Basement
- Strong Landlord
- Close to Transportation



### For More Information, Please Contact

**Michael Doetsch**  
Senior Vice President  
212.389.2364  
MDoetsch@cresa.com

**Leslie Keidan**  
Vice President  
212.687.4206  
LKeidan@cresa.com

Even though obtained from sources deemed reliable, no warranty or representation, express or implied, is made as to the accuracy of the information herein, and it is subject to errors, omissions, change of price, rental or other conditions, withdrawal without notice, and to any special listing conditions imposed by our principals.

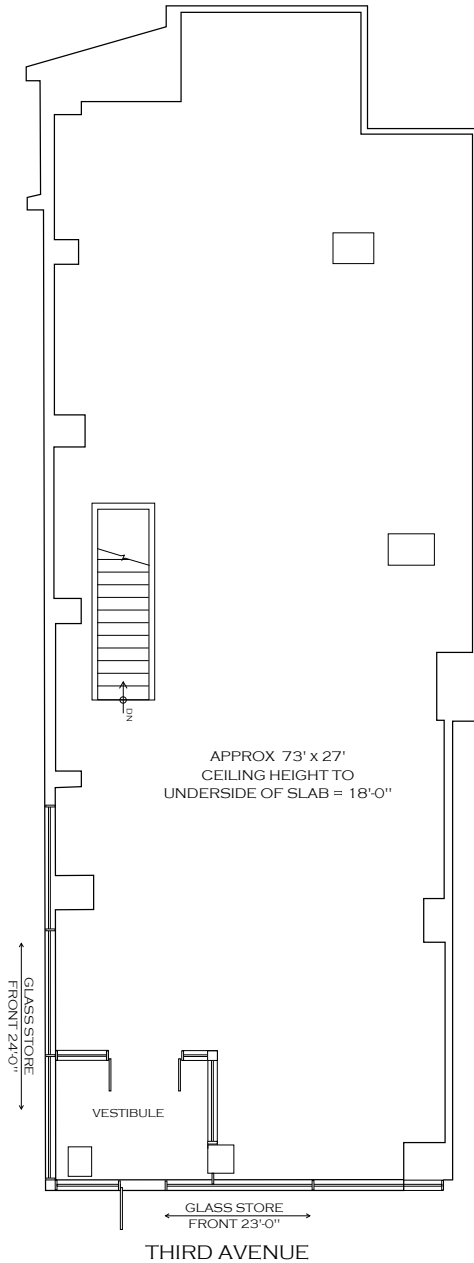


1633 Broadway, 22nd Floor, New York, NY 10019

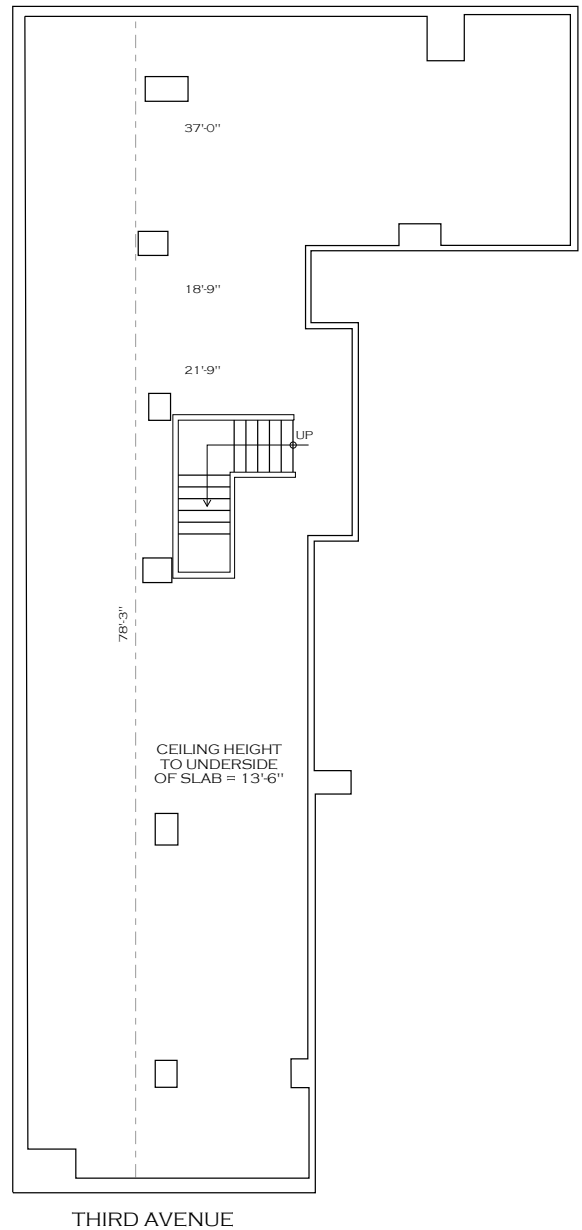


# 1243 THIRD AVENUE

## Partial Ground Floor | 1,750 RSF



## Non-Selling Basement | 1,770 RSF



### For More Information, Please Contact

**Michael Doetsch**  
Senior Vice President  
212.389.2364  
MDoetsch@cresa.com

**Leslie Keidan**  
Vice President  
212.687.4206  
LKeidan@cresa.com

**Cresa**  
1633 Broadway  
22nd Floor  
New York, NY 10019