

# 1215 2ND AVENUE

## Retail Space Available

SOUTHWEST CORNER OF  
64TH STREET



### Space Profile

|                    |                                            |
|--------------------|--------------------------------------------|
| <b>Premises</b>    | Partial Ground Floor                       |
| <b>Size</b>        | 2,817 RSF<br>(Space Can be Divided in Two) |
| <b>Possession</b>  | Immediate                                  |
| <b>Rental Rate</b> | Upon Request                               |

### Features

- Frontage: 23' on Second Avenue & 96' on 64th Street
- Ceiling height: 10' 6"
- Great Location and High Foot Traffic Area
- At the base of the Luxury Apartment Building, Regency Towers
- Several Nearby Subway Lines Including the F, N, Q, R, 4, 5, 6 & 2nd Avenue Subway Entrance
- Grab and Go/Food Tenant Permitted



### For More Information, Please Contact

**Michael Doetsch**  
Senior Vice President  
212.389.2364  
MDoetsch@cresa.com

**Leslie Keidan**  
Vice President  
212.687.4206  
LKeidan@cresa.com

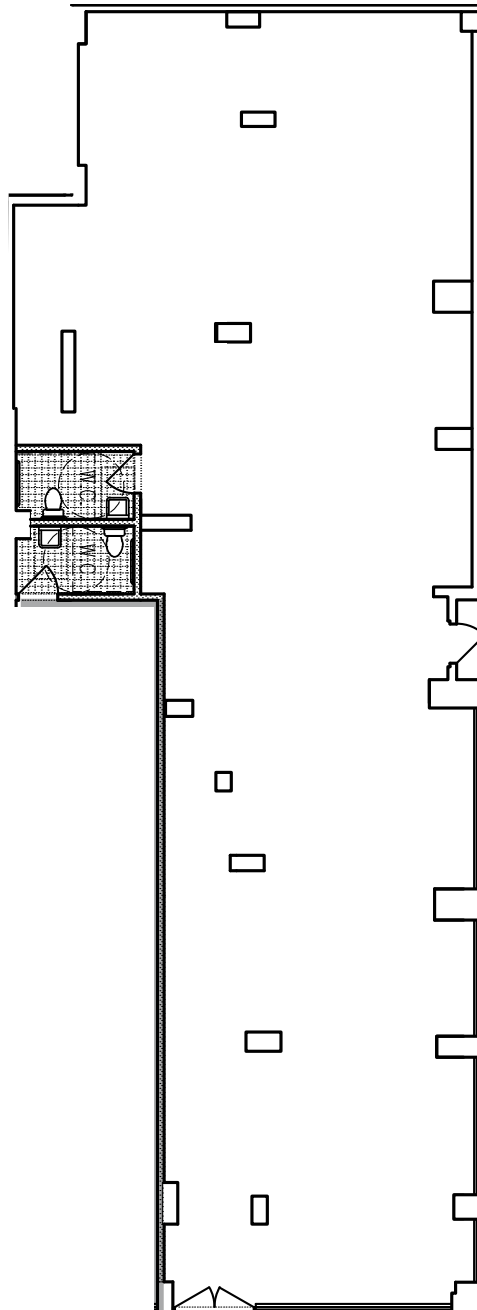
Even though obtained from sources deemed reliable, no warranty or representation, express or implied, is made as to the accuracy of the information herein, and it is subject to errors, omissions, change of price, rental or other conditions, withdrawal without notice, and to any special listing conditions imposed by our principals.



1633 Broadway, 22nd Floor, New York, NY 10019



# 1215 2ND AVENUE



## For More Information, Please Contact

**Michael Doetsch**  
Senior Vice President  
212.389.2364  
MDoetsch@cresa.com

**Leslie Keidan**  
Vice President  
212.687.4206  
LKeidan@cresa.com

**Cresa**  
1633 Broadway  
22nd Floor  
New York, NY 10019