

200 EAST 72ND STREET AKA 1247 3RD AVENUE

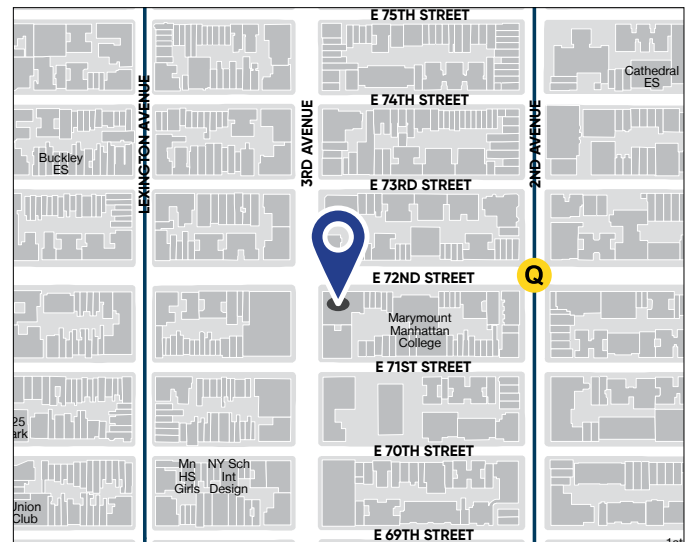
Retail Space Available

Space Profile

Premises	Ground Floor
Size	~1,505 RSF
Possession	Immediate
Rental Rate	Upon Request
Term	10 Years

Features

- High Volume of Daily Traffic:
14,000 on East 72nd Street
26,000 on Third Avenue
- Street Level Frontage: Approx 31' x 28'
- Former T-Mobile Space
- Strong Landlord
- Close to Transportation



For More Information, Please Contact

Michael Doetsch
Senior Vice President
212.389.2364
MDoetsch@cresa.com

Leslie Keidan
Vice President
212.687.4206
LKeidan@cresa.com

Even though obtained from sources deemed reliable, no warranty or representation, express or implied, is made as to the accuracy of the information herein, and it is subject to errors, omissions, change of price, rental or other conditions, withdrawal without notice, and to any special listing conditions imposed by our principals.



1633 Broadway, 22nd Floor, New York, NY 10019



200 EAST 72ND STREET AKA 1247 3RD AVENUE

Ground Floor | ~1,505 RSF



For More Information, Please Contact

Michael Doetsch
Senior Vice President
212.389.2364
MDoetsch@cresa.com

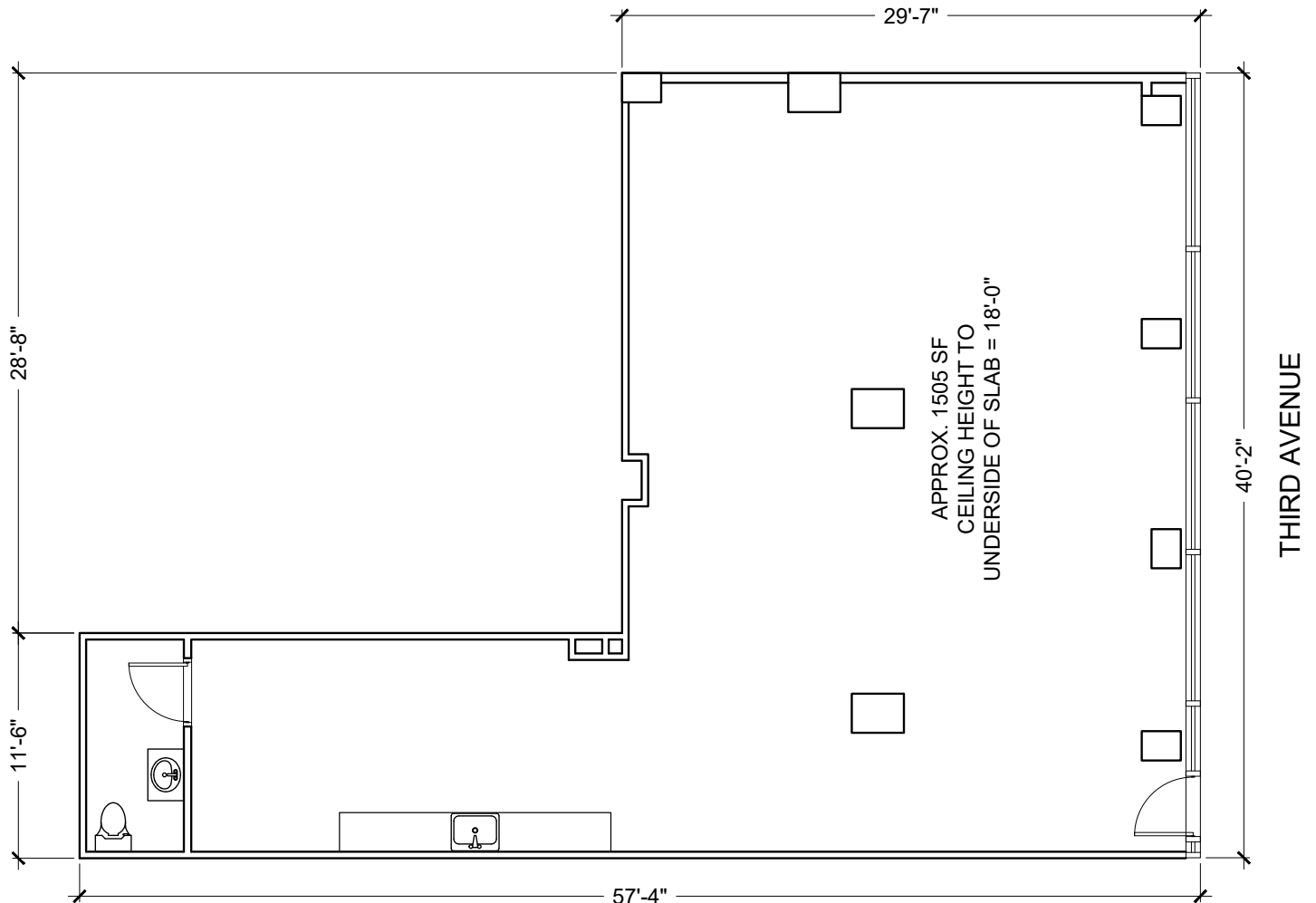
Leslie Keidan
Vice President
212.687.4206
LKeidan@cresa.com

Cresa
1633 Broadway
22nd Floor
New York, NY 10019



200 EAST 72ND STREET AKA 1247 3RD AVENUE

Ground Floor | ~1,505 RSF



For More Information, Please Contact

Michael Doetsch
Senior Vice President
212.389.2364
MDoetsch@cresa.com

Leslie Keidan
Vice President
212.687.4206
LKeidan@cresa.com

Cresa
1633 Broadway
22nd Floor
New York, NY 10019