

A tall, modern skyscraper with a stepped, tiered design, featuring a grid of windows and a prominent glass facade on the right side. The building is viewed from a low angle, showing a bridge railing in the foreground and a traffic light on the right.

Sublease Available

| | |
|---------------------|-------------------|
| Premises | Partial 9th Floor |
| Size | 13,550 RSF |
| Rental Rate | Upon Request |
| Term | May 30, 2028 |
| Availability | Q2 2021 |

- Glass Double Door Entry
- Second Means of Ingress/Egress
- 3 Phone Booths
- Large Conference Room Seats 25 People and an Additional Conference Room Seats 8 People
- Open Workstations with Bench Seating for 85 People
- 5 Private Windowed Offices with Wood Framed Glass Walls
- High Drop Ceilings with Modern Lighting
- Game Room
- Large Kitchen/Pantry
- Natural Light with Partial Grand Central Terminal Views



Thomas P. Sullivan
212.687.4314 - Direct
914.374.6098 - Cell
TSullivan@cresa.com



1633 Broadway, 22nd Floor, New York, NY 10019





99 PARK AVENUE



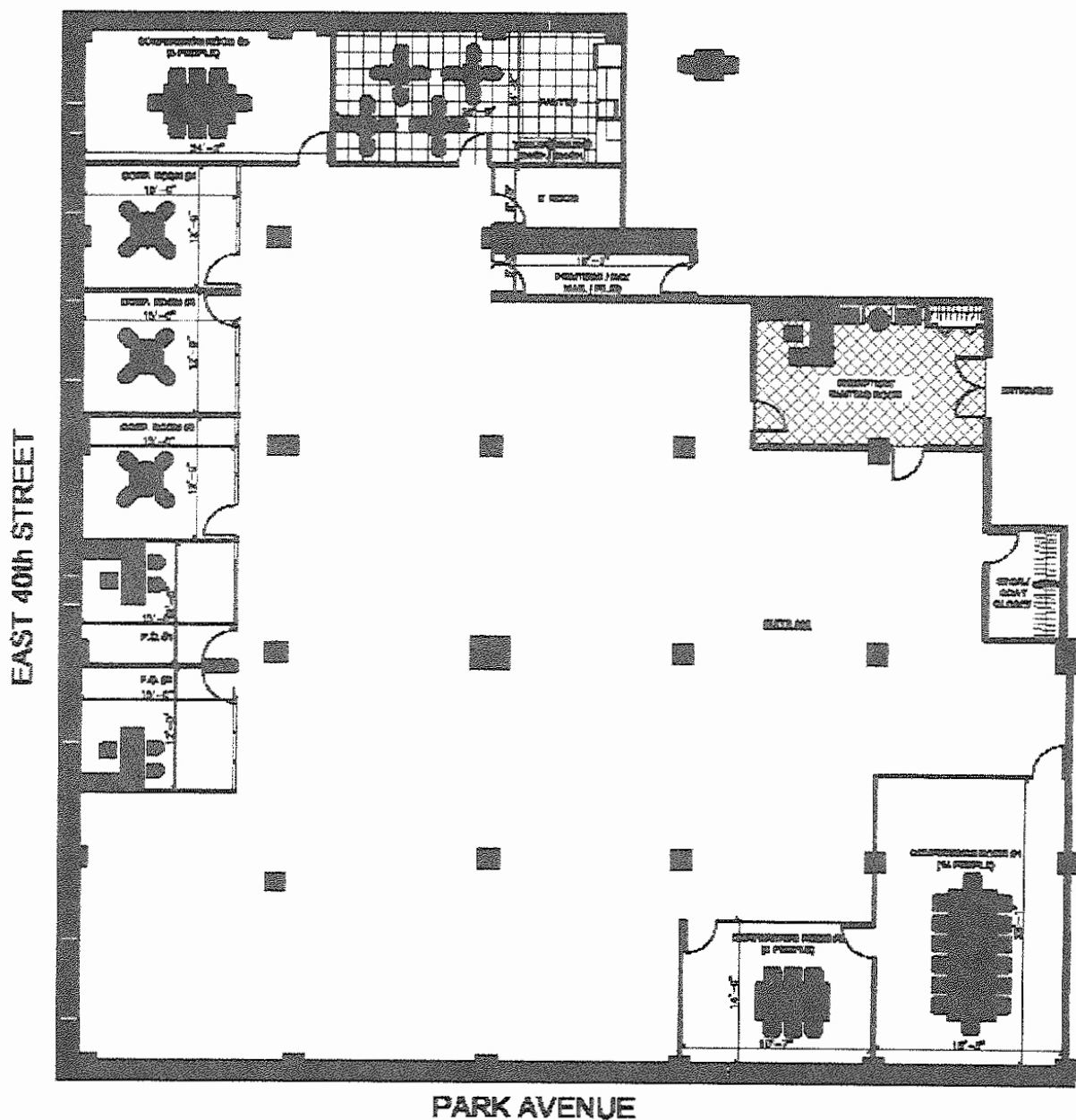
For More Information, please contact

Thomas P. Sullivan
212.687.4314 - direct
914.374.6098 - Cell
TSullivan@cresa.com

Cresa
1633 Broadway
22nd Floor
New York, NY 10019



99 PARK AVENUE



For More Information, please contact

Thomas P. Sullivan
212.687.4314 - direct
914.374.6098 - Cell
TSullivan@cresa.com

Cresa
1633 Broadway
22nd Floor
New York, NY 10019