



cresa

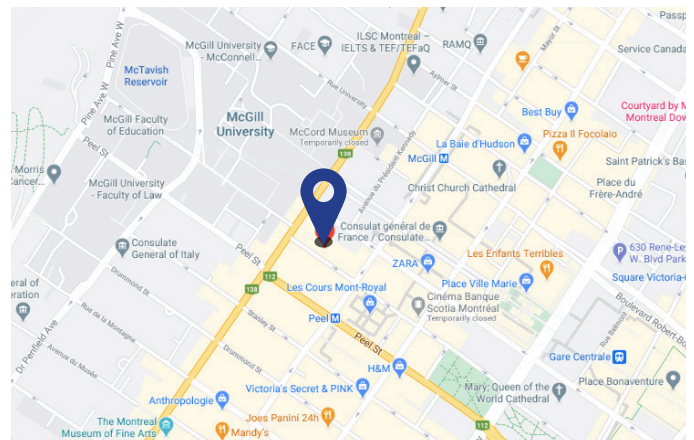
New Sublease Available

1002 Sherbrooke West
Montreal, QC

Space Profile:

Building Class:	A
Rentable SF:	17,171 SF (12,505 SF on the 16th Floor and 4,666 SF on the 15th Floor)
Availability:	30 days
Lease Expiry:	October 31st, 2023
Base Rent:	Negotiable
Additional Rent:	\$22.69/SF (2020)
Electricity:	Included
Cleaning:	Included

Map



Features:

- Premises are located on the entire 16th and a portion of the 15th floor with an internal staircase connecting both floors.
- Newly renovated office space in the downtown core.
- Close proximity to Peel metro and future McGill College REM station.
- Furniture can be included, to be discussed.

For more information:

Bruce A. Cowper
Managing Principal
Chartered Real Estate Broker
514.319.1911 x1
bcowper@cresa.com

Laurent Abergel
Advisor
Commercial Real Estate Broker
514.319.1911 x2
labergel@cresa.com



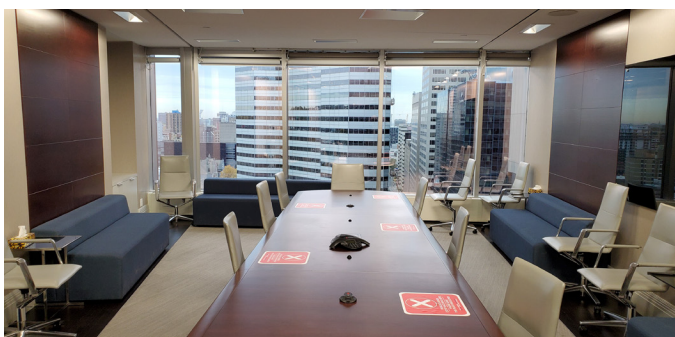
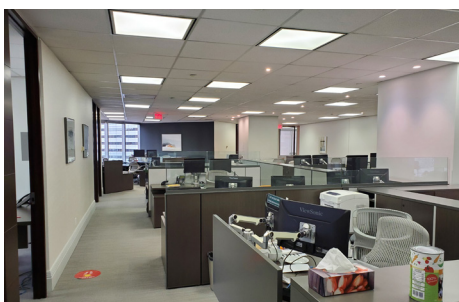
Schedule a visit: Contact a Cresa Advisor to tour this unique sublease opportunity





1002 Sherbrooke West Montreal, QC

16th Floor, Suite 1600 - 12,505 SF



Cresa
Commercial Real Estate Agency
2000 McGill College
6th Floor
Montreal, Quebec, H3A 3H3
514 319-1911



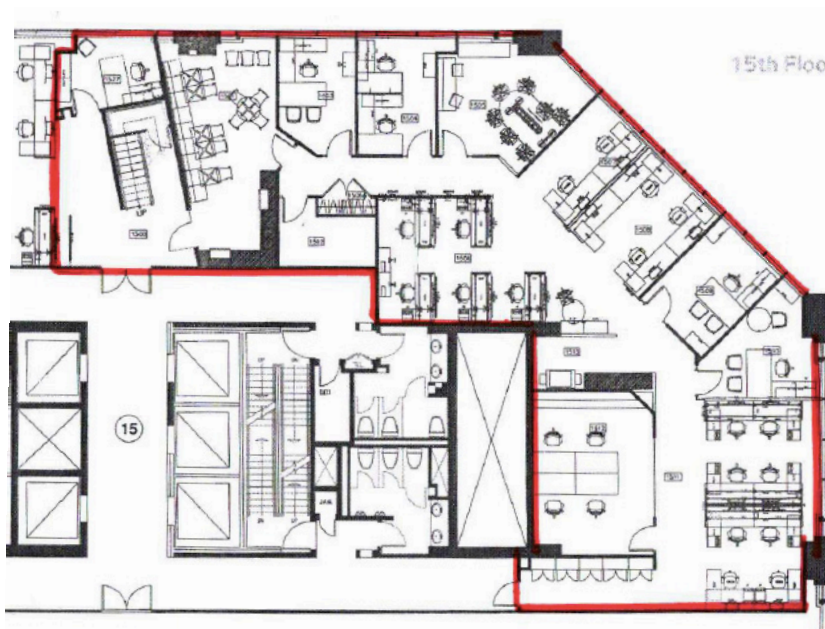
Cresa is the world's largest occupier-only commercial real estate firm. In representing occupiers exclusively — no landlords, no developers — we provide unbiased, conflict-free advice. Our integrated services cover every aspect of a real estate transaction from site selection and financing to project management and relocation services.

The information contained in this document, including images, opinions, assumptions and estimates (the Information) has not been reviewed by Cresa, and Cresa does not indicate, warrant, or warrant the suitability, accuracy and completeness of the Information. Cresa does not accept and assumes no responsibility or liability, direct or indirect, for the Information or references that the recipient will make. The recipient of the Information must take the measures he considers necessary to verify the Information before using it for reference. The Information may change and all of the properties described by the Information may be withdrawn from the market at any time without notice and without creating any obligation on the part of Cresa vis-à-vis the recipient.



1002 Sherbrooke West Montreal, QC

15th Floor, Suite 1500 - 4,666 SF



Cresa
Commercial Real Estate Agency
2000 McGill College
6th Floor
Montreal, Quebec, H3A 3H3
514 319-1911



Cresa is the world's largest occupier-only commercial real estate firm. In representing occupiers exclusively — no landlords, no developers — we provide unbiased, conflict-free advice. Our integrated services cover every aspect of a real estate transaction from site selection and financing to project management and relocation services.

The information contained in this document, including images, opinions, assumptions and estimates (the Information) has not been reviewed by Cresa, and Cresa does not indicate, warrant, or warrant the suitability, accuracy and completeness of the Information. Cresa does not accept and assumes no responsibility or liability, direct or indirect, for the Information or references that the recipient will make. The recipient of the Information must take the measures he considers necessary to verify the Information before using it for reference. The Information may change and all of the properties described by the Information may be withdrawn from the market at any time without notice and without creating any obligation on the part of Cresa vis-à-vis the recipient.