

# Sublease

## 701 Brickell

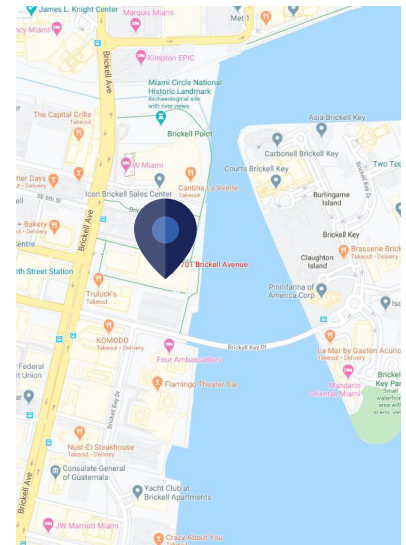
701 Brickell Avenue  
Miami, FL 33131

### Space & Building Profile

Premises	21st floor
RSF	2,691 SF
Rental Rate	\$57.00/SF
Term	12/31/2024
Building Class	A
Submarket	Brickell
Built	1985
Furniture	Negotiable
Parking	1.92/1,000 SF 1,300 covered at \$125/mo Reserved at \$180/mo

### Features

- Brickell Avenue's largest stand-alone tower in heart of business community, on waterfront and with upscale amenities
- 38-foot, floor-to-ceiling windows in lobby
- 24-hour state-of-the-art security and onsite management
- Direct access to downtown, airport, I-95 and unobstructed views of Biscayne Bay



### Contact



**Zachary Talbot**  
954.376.0235 mobile  
ztalbot@cresa.com





**701 Brickell**

701 Brickell Avenue



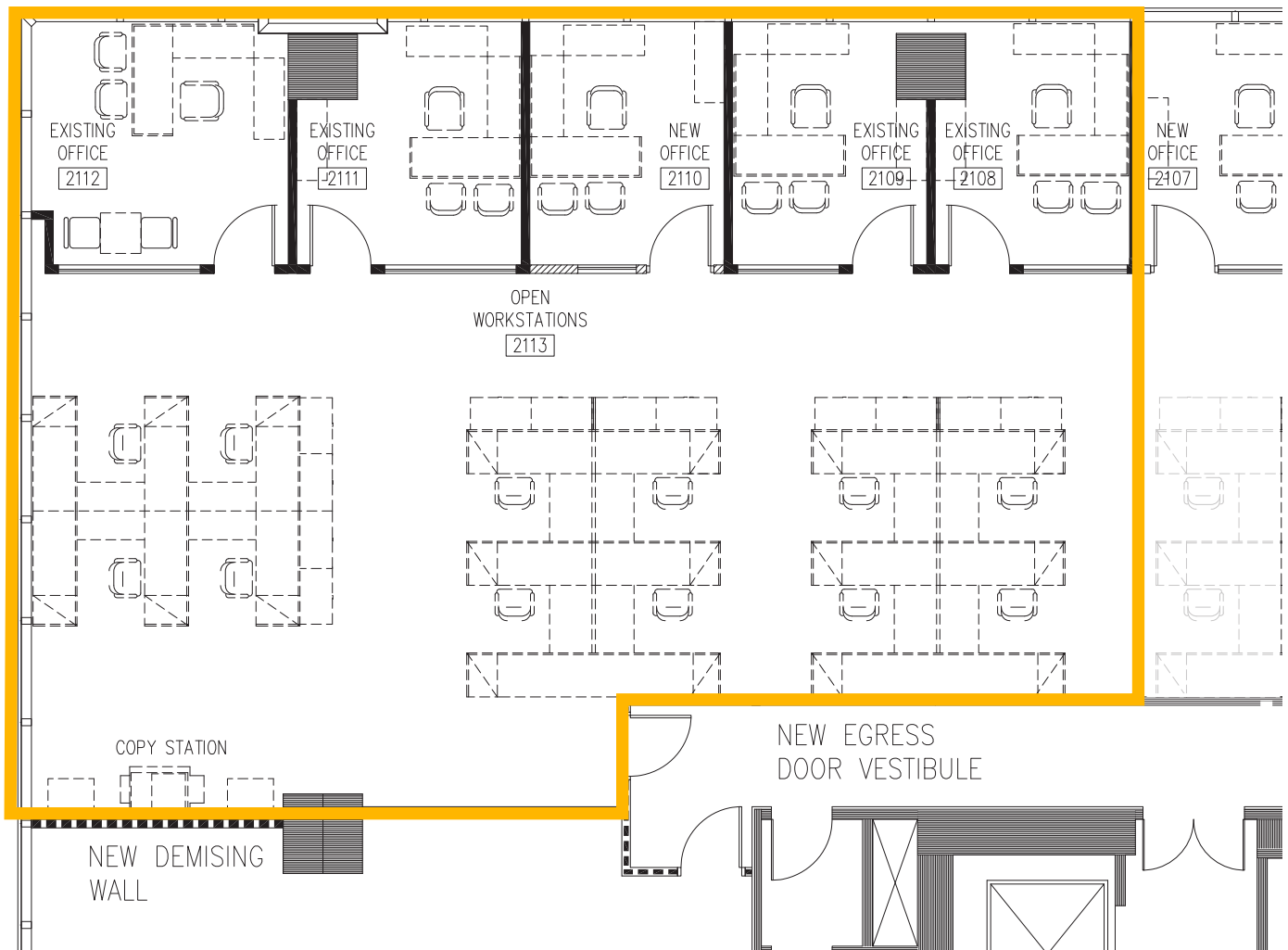
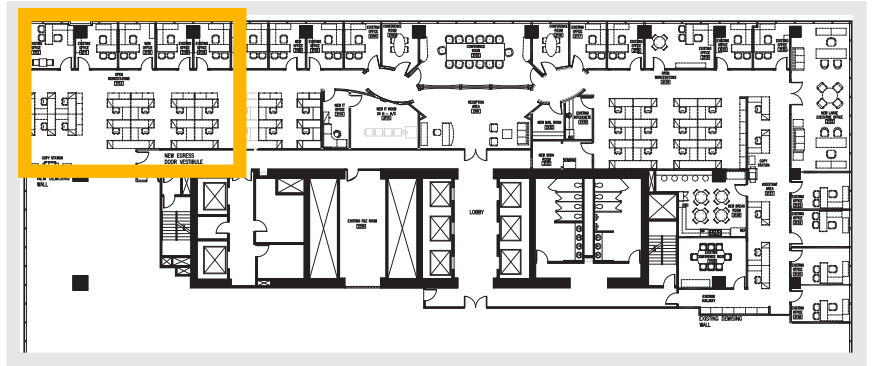
**cresa** ::

Cresa © 2020. All rights reserved. The information contained in this document has been obtained from sources believed reliable. While Cresa does not doubt its accuracy, Cresa has not verified it and makes no guarantee, warranty, or representation about it. It is your responsibility to independently confirm its accuracy and completeness. Any projections, opinions, assumptions or estimates used are for example only and do not represent the current or future performance of the property. The value of this transaction to you depends on tax and other factors which should be evaluated by your tax, financial and legal advisors. You and your advisors should conduct a careful, independent investigation of the property to determine to your satisfaction the suitability of the property for your needs.



# Sublease

21st floor: 2,691 SF



cresa

Cresa © 2020. All rights reserved. The information contained in this document has been obtained from sources believed reliable. While Cresa does not doubt its accuracy, Cresa has not verified it and makes no guarantee, warranty, or representation about it. It is your responsibility to independently confirm its accuracy and completeness. Any projections, opinions, assumptions or estimates used are for example only and do not represent the current or future performance of the property. The value of this transaction to you depends on tax and other factors which should be evaluated by your tax, financial and legal advisors. You and your advisors should conduct a careful, independent investigation of the property to determine to your satisfaction the suitability of the property for your needs.