

# Architectural Plug & Play Creative Office



**Heritage Square**  
6121 Hollis St  
Emeryville, CA

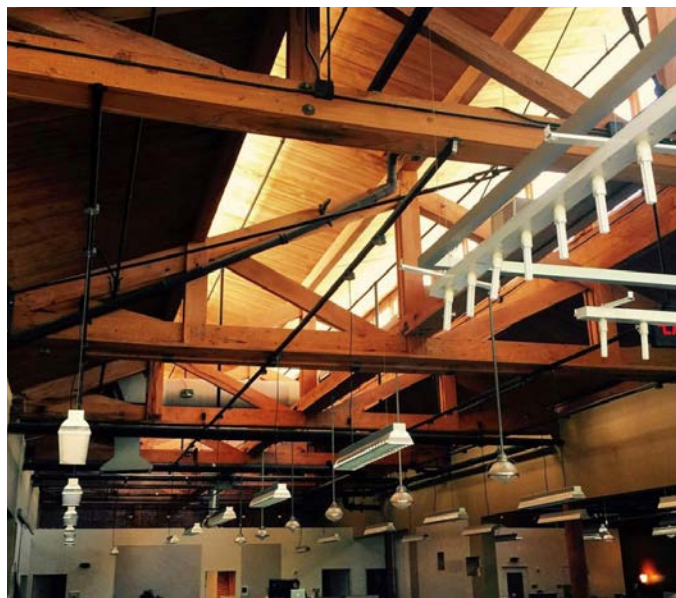
**Sublease Available**

## Space Profile

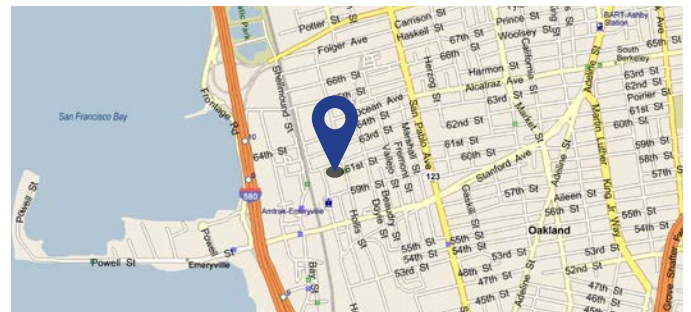
<b>Premises</b>	13,988 SF (Suite 400)
<b>Rental Rate</b>	Undisclosed
<b>Availability</b>	Now
<b>Term</b>	Through December 31, 2023
<b>Parking Ratio</b>	3/1000

## Features

- Over \$150/SF in TI improvements
- Skylights providing abundance of natural light
- 24-hour security
- FF&E included
- CAT6e cabling/fiber bandwidth installed
- Shuttle service to BART and walking distance to Emeryville Public Market



## Map



## For More Information

**Greg Lovett**  
310.943.5160  
glovett@cresa.com  
BRE# 01205970

**Davorin Kristo**  
310.943.5144  
dkristo@cresa.com  
BRE# 02065933

11726 San Vicente Blvd., Suite 500, Los Angeles, CA 90049



Even though obtained from sources deemed reliable, no warranty or representation, express or implied, is made as to the accuracy of the information herein, and it is subject to errors, omissions, change of price, rental or other conditions, withdrawal without notice, and to any special listing conditions imposed by our principals.

Suite 400 - 13,988 SF



**For More Information**

**Greg Lovett**  
310.943.5160  
glovett@cresa.com  
BRE# 01205970

**Davorin Kristo**  
310.943.5144  
dkristo@cresa.com  
BRE# 02065933