



The Village at Rolling Hills Estates
600 Deep Valley Dr
Rolling Hills Estates, CA 90274

Lease Available

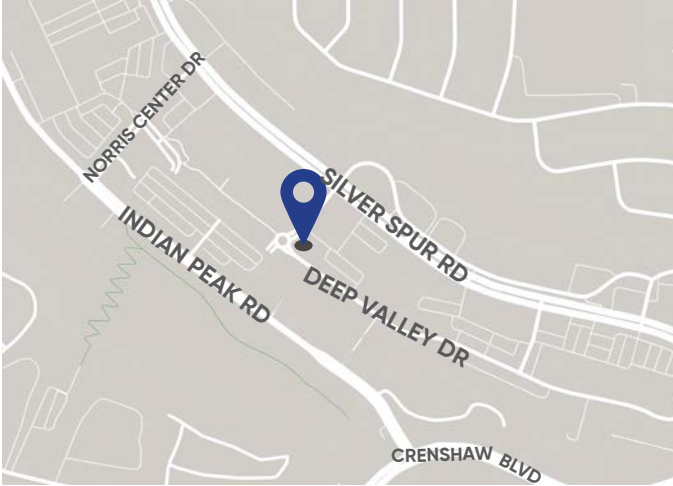
Space Profile

Premises	988 SF
Rental Rate	Negotiable
Availability	Immediately
Term	Flexible
Parking	7 spaces per 1,000 SF at no charge

Features

- Highly efficient, office/retail space – ready to go
- Over-standard parking
- Central Peninsula Center location
- Great for office, retail, medical or education tenants
- Private restrooms within the space

Map



For More Information

Christian M. Riegel
310.943.5113 direct
310.490.7814 cell
criegel@cresa.com
BRE# 01030733

11726 San Vicente Blvd., Suite 500, Los Angeles, CA 90049

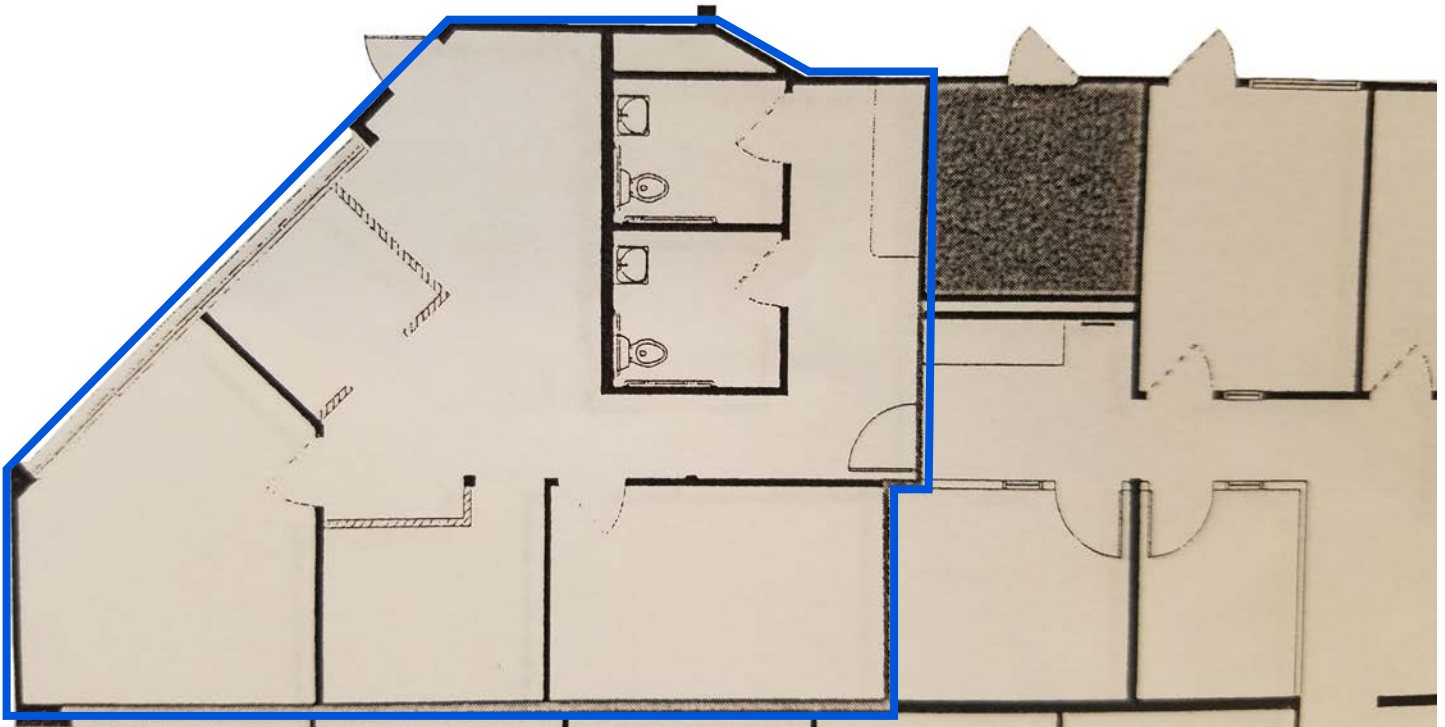


Even though obtained from sources deemed reliable, no warranty or representation, express or implied, is made as to the accuracy of the information herein, and it is subject to errors, omissions, change of price, rental or other conditions, withdrawal without notice, and to any special listing conditions imposed by our principals.



600 Deep Valley Dr
Rolling Hills Estates, CA

Floorplan - 988 SF



For More Information

Christian M. Riegel
310.943.5113 direct
310.490.7814 cell
criegel@cresa.com
BRE# 01030733

Interior Photos



For More Information

Christian M. Riegel
310.943.5113 direct
310.490.7814 cell
criegel@cresa.com
BRE# 01030733