



**Culver Point**  
**200 Corporate Pointe**  
**Culver City, CA 90230**

**Sublease**  
**Available**

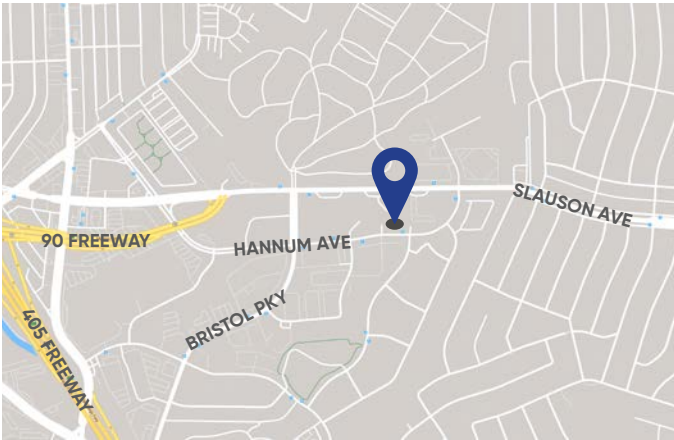
**Space Profile**

<b>Premises</b>	3,402 SF (Suite 100)
<b>Rental Rate</b>	\$4.00 FSG
<b>Availability</b>	Immediately
<b>Term</b>	Through February 10, 2021
<b>Parking</b>	3.5/1000 \$150 Reserved \$100 Unreserved

**Features**

- Concrete floor and exposed ceilings
- Double door entry from building lobby
- Open space with kitchen area, conference room and storage
- Wired and ready for use

**Map**



**For More Information**

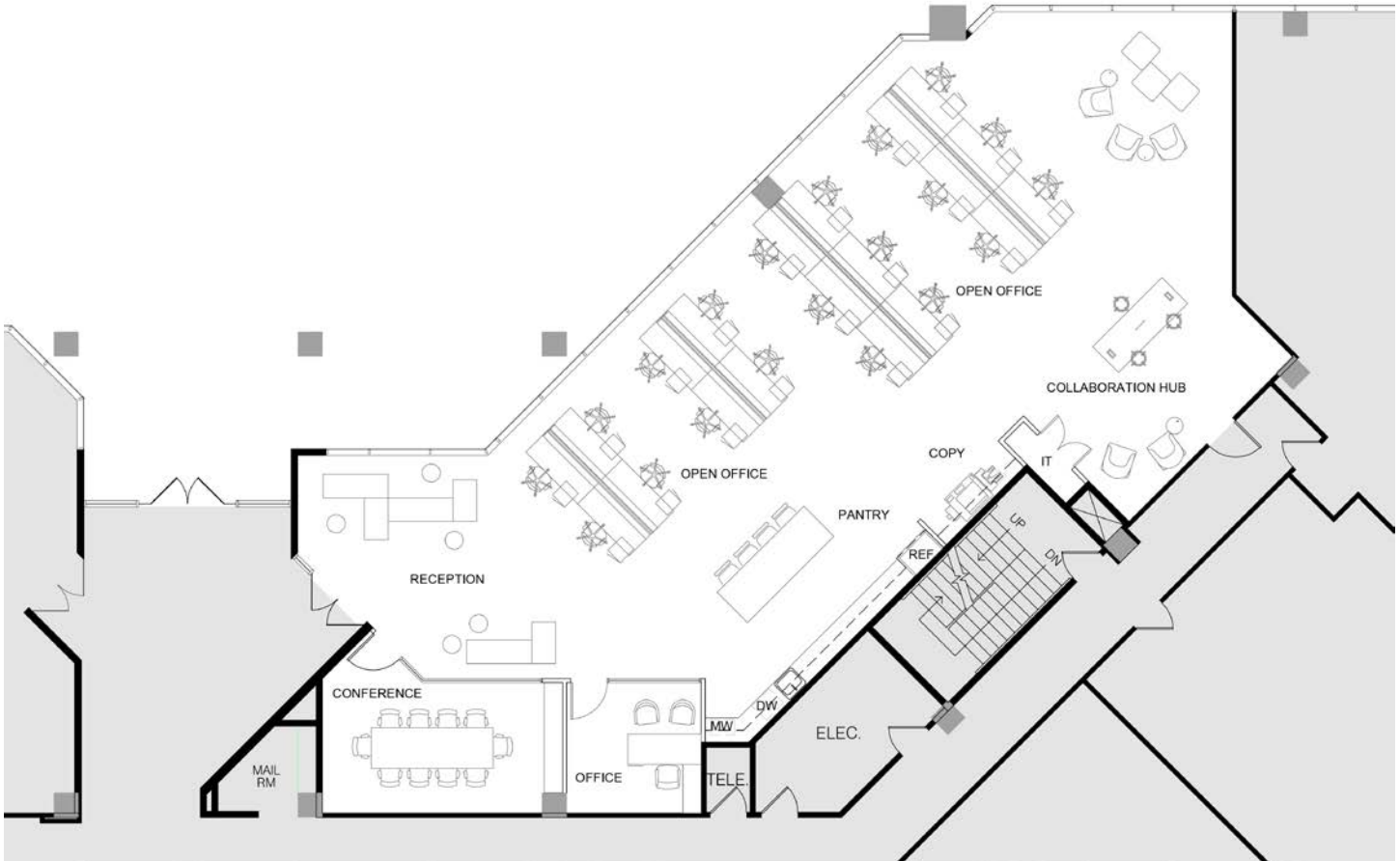
**Justin Hale**  
310.943.5149  
jhale@cresa.com  
BRE# 01962228

11726 San Vicente Blvd., Suite 500, Los Angeles, CA 90049



Even though obtained from sources deemed reliable, no warranty or representation, express or implied, is made as to the accuracy of the information herein, and it is subject to errors, omissions, change of price, rental or other conditions, withdrawal without notice, and to any special listing conditions imposed by our principals.

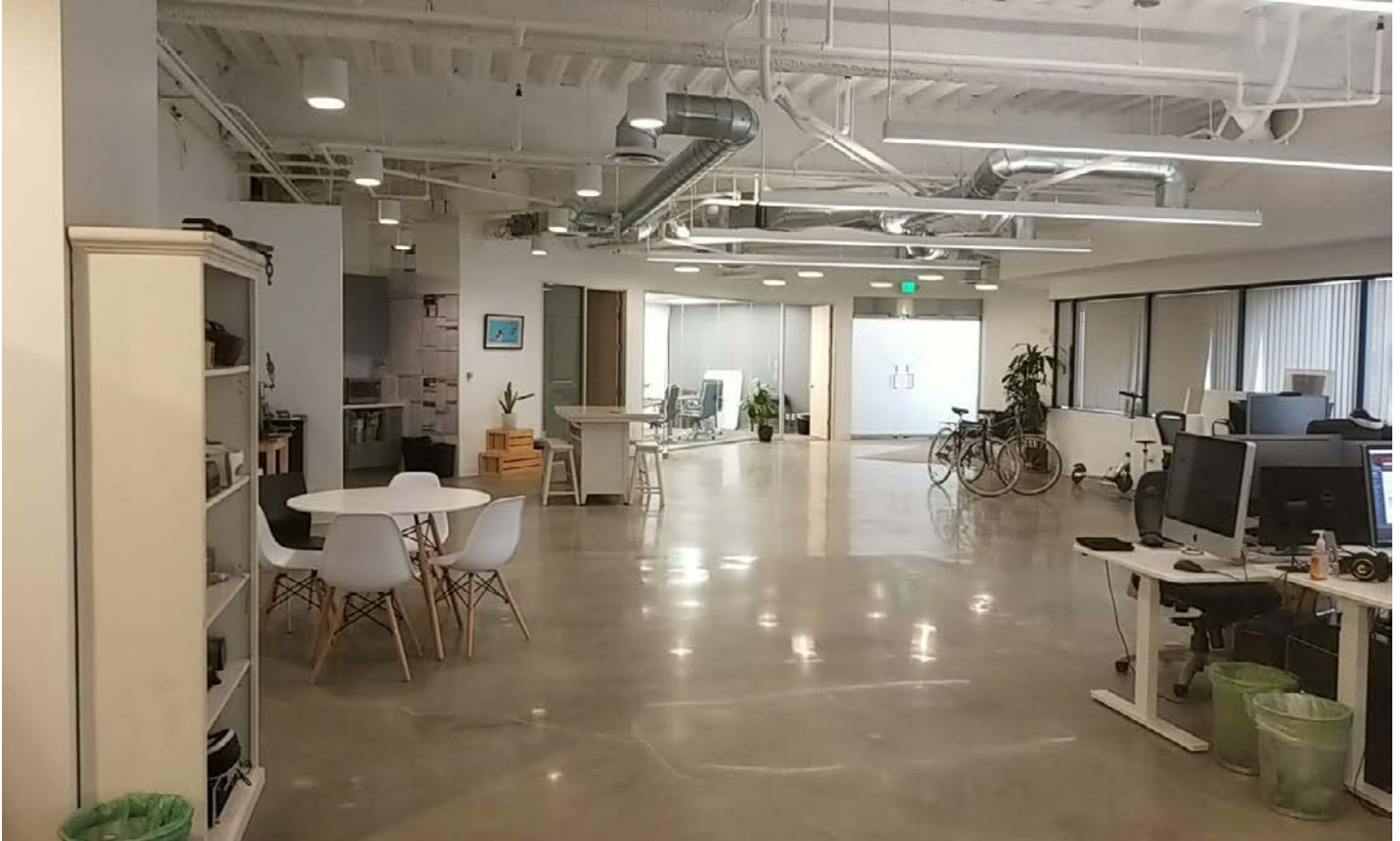
Suite 100 - 3,402 SF



**For More Information**

**Justin Hale**  
310.943.5149  
jhale@cresa.com  
BRE# 01962228

Interior Photos



For More Information

**Justin Hale**  
310.943.5149  
jhale@cresa.com  
BRE# 01962228