

Sublease

Two full-floor subleases in Westwood

10960 Wilshire Blvd
Los Angeles, CA 90024

Space Profile:

Premises	23rd & 24th Floors (can be individually subleased)
Size/RSF	51,972 RSF 23rd Floor: 25,986 RSF 24th Floor: 25,986 RSF
Rental Rate	\$4.40 FSG
Availability	Immediately
Term	Thru April 26, 2026
Parking	4/1000, \$340 Reserved & \$240 Unreserved

Features:

- Plug and Play furnished sublease space
- Interconnecting stair
- 24th floor penthouse with 14' ceilings

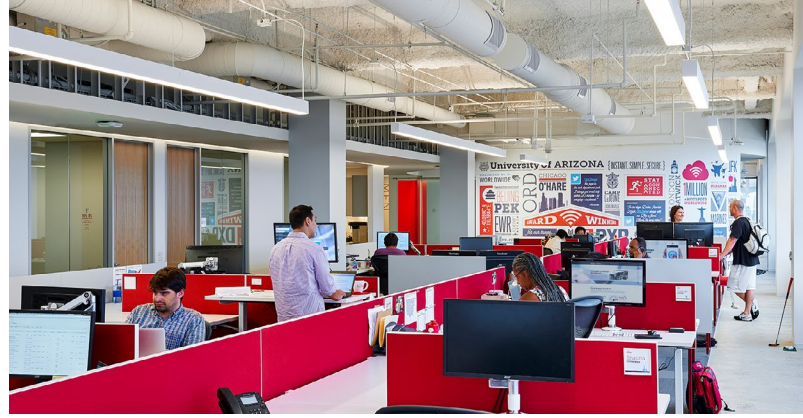


Contact:

Matthew Miller
mmiller@cresa.com
BRE# 00910525

Rollins Stallworth
775.527.0318
rollins@t3advisors.com
BRE# 02025378

T3ADVISORS
cresa



10960 Wilshire Blvd

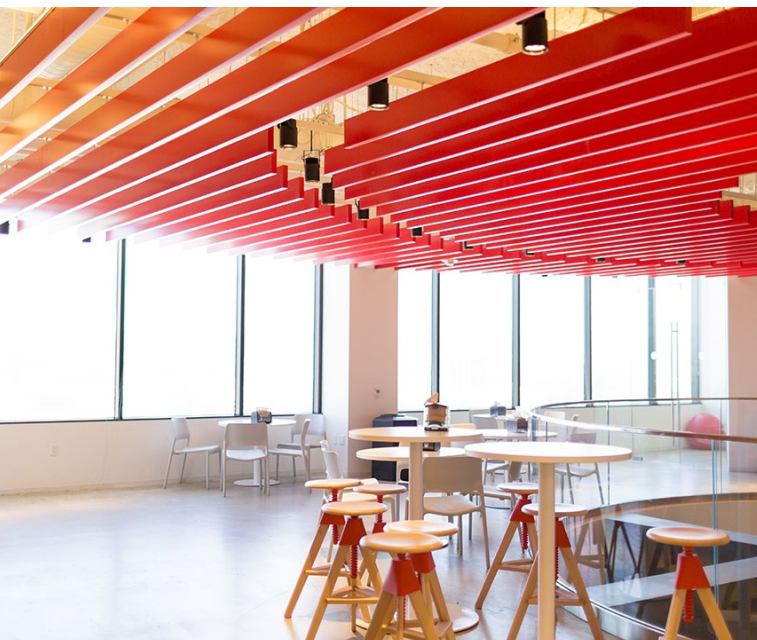
Los Angeles, CA 90024



Contact:

Matthew Miller
mmiller@cresa.com
BRE# 00910525

Rollins Stallworth
775.527.0318
rollins@t3advisors.com
BRE# 02025378



**VIEW THE
VIRTUAL TOUR**



10960 Wilshire Blvd

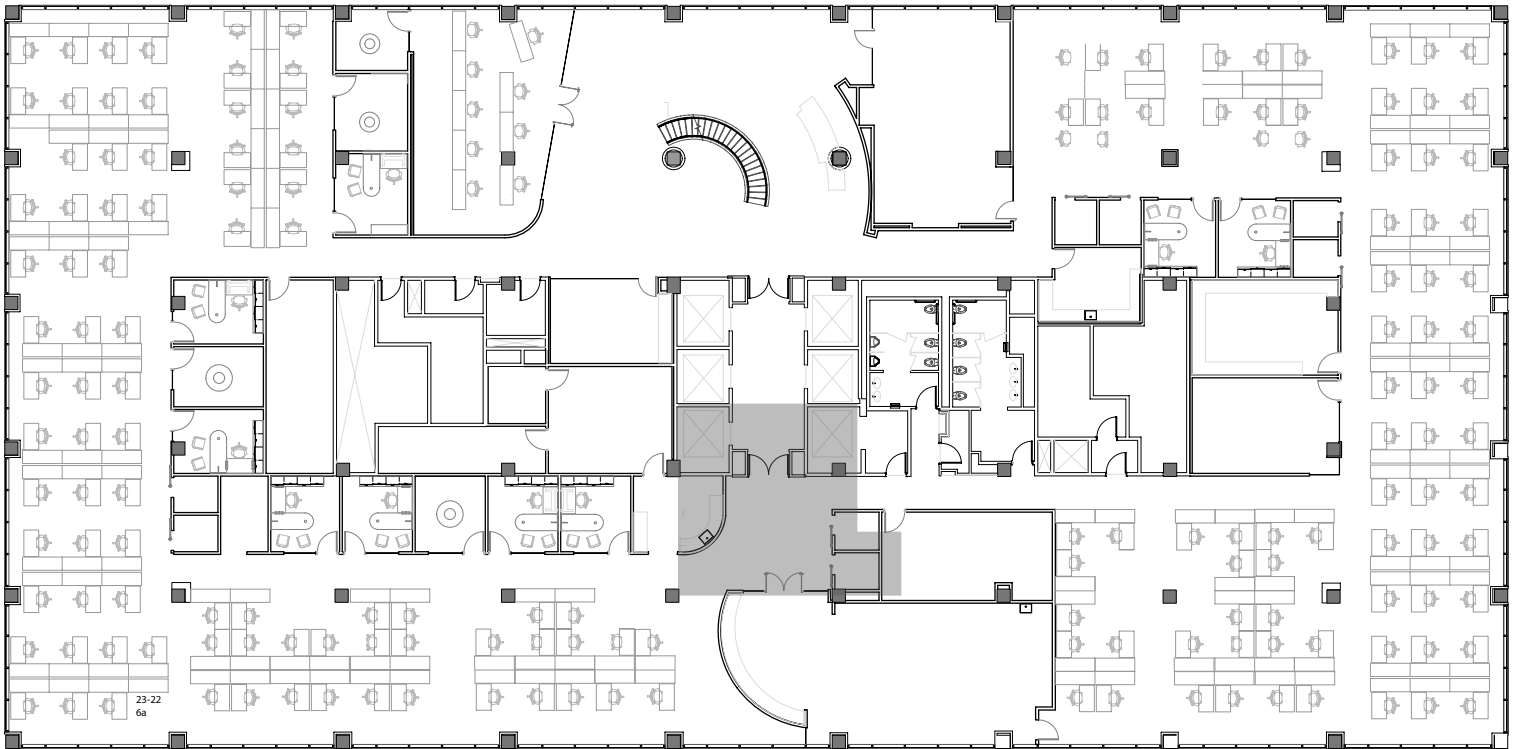
Los Angeles, CA 90024



**VIEW THE
VIRTUAL TOUR**



23rd Floor



24th Floor

