

Signage Opportunity 888 W. 6th Street Los Angeles, CA 90017

Sublease Available



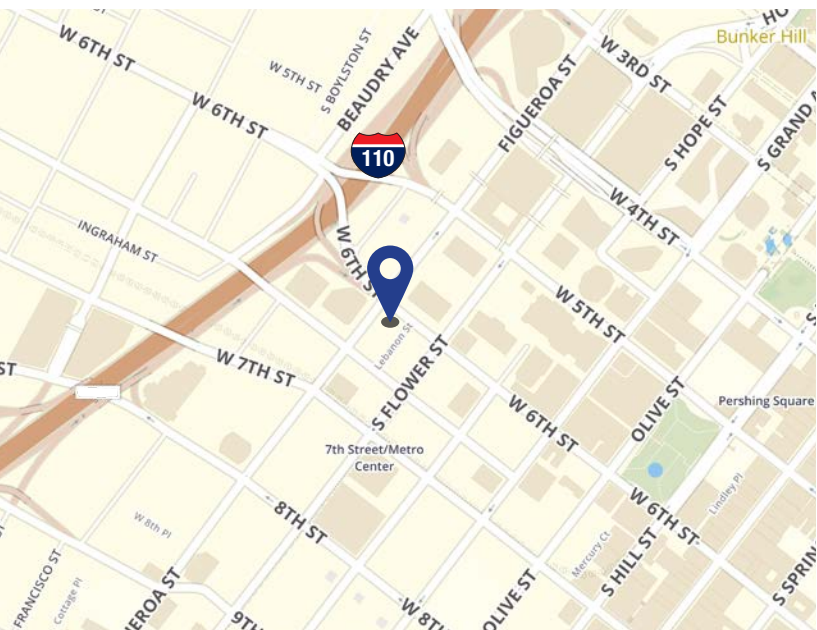
Space Profile

Premises	14,045 RSF (Entire 2nd Floor)
Rental Rate	\$2.58 PSF, FSG, per month with 3% annual increases
Availability	Within 90 Days
Term	Through September 30, 2022 (extended term negotiable)
Parking	21 unreserved spaces 4 reserved spaces At prevailing rates
Transferable Signage!	Prominent building eyebrow and monument signage available

Features

- High ceilings; functional layout; lots of glass
- Move-in condition
- Two exterior balconies
- Ideal space for banks, insurance, law and other professional firms
- Central Downtown location
- Furniture may be available

Map



For More Information

James Travers
213.683.1500
jtravers@cresa.com
BRE# 00478795

Dennis Smith
213.430.2463
desmith@cresa.com
BRE# 01078536

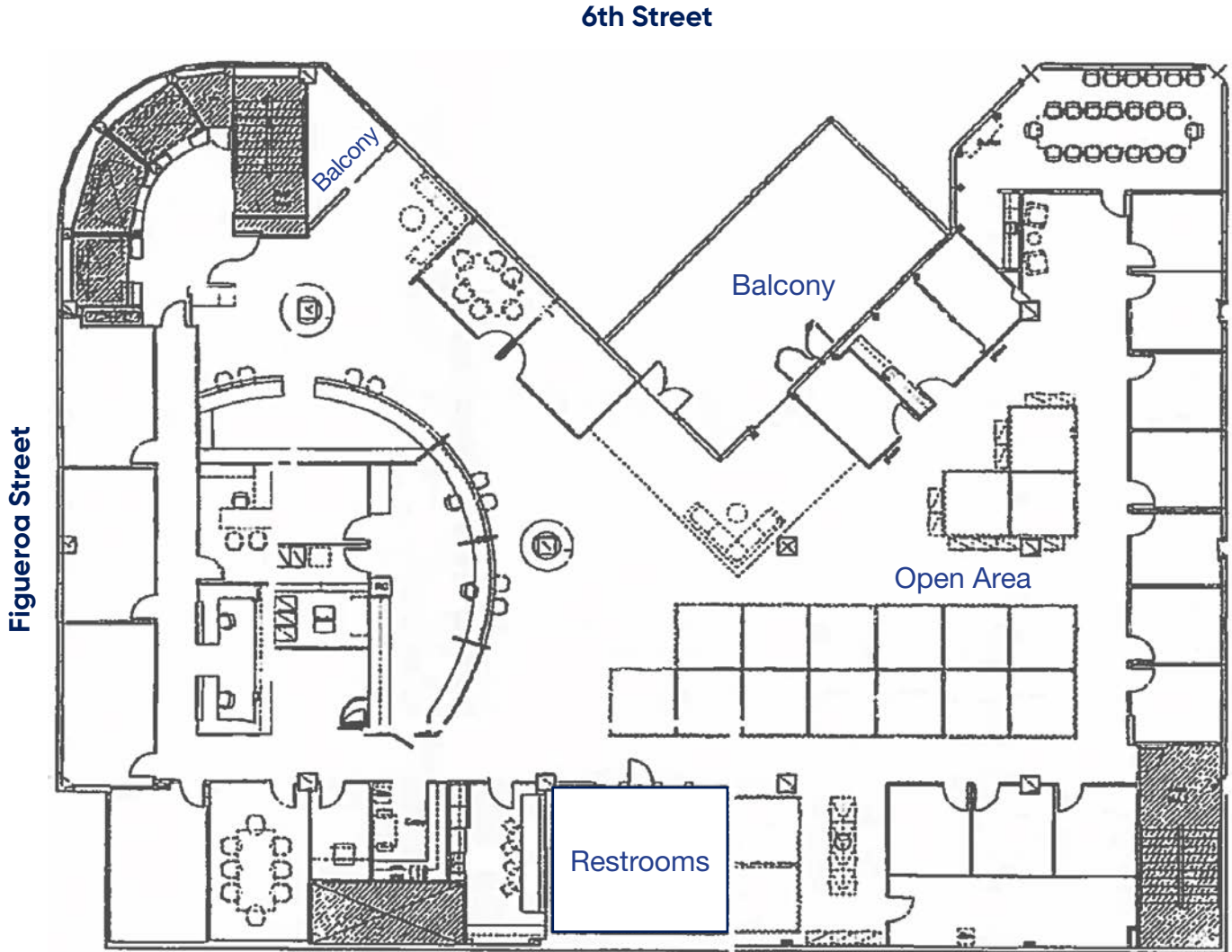
Blake Martin
213.430.2452
bmartin@cresa.com
BRE# 02080666

Even though obtained from sources deemed reliable, no warranty or representation, express or implied, is made as to the accuracy of the information herein, and it is subject to errors, omissions, change of price, rental or other conditions, withdrawal without notice, and to any special listing conditions imposed by our principals.



550 South Hope Street, Suite 2600, Los Angeles, CA 90071

Entire 2nd Floor - 14,045 RSF



For More Information

James Travers
213.683.1500
jtravers@cresa.com
BRE# 00478795

Dennis Smith
213.430.2463
desmith@cresa.com
BRE# 01078536

Blake Martin
213.430.2452
bmartin@cresa.com
BRE# 02080666



888 W. 6th Street
Los Angeles, CA 90017

Entire 2nd Floor - 14,045 RSF



For More Information

James Travers
213.683.1500
jtravers@cresa.com
BRE# 00478795

Dennis Smith
213.430.2463
desmith@cresa.com
BRE# 01078536

Blake Martin
213.430.2452
bmartin@cresa.com
BRE# 02080666



888 W. 6th Street
Los Angeles, CA 90017

Entire 2nd Floor - 14,045 RSF



For More Information

James Travers
213.683.1500
jtravers@cresa.com
BRE# 00478795

Dennis Smith
213.430.2463
desmith@cresa.com
BRE# 01078536

Blake Martin
213.430.2452
bmartin@cresa.com
BRE# 02080666