

811 Wilshire Boulevard
Los Angeles, CA 90017

Sublease
Available

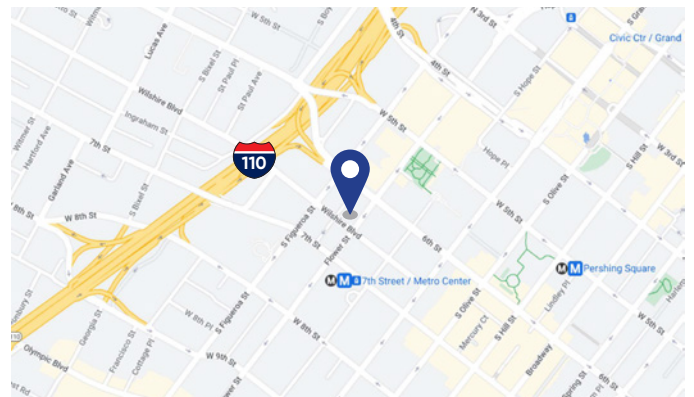
Space Profile

Premises	4,311 RSF (Suites 1810 & 1820)
Rental Rate	\$1.75 FSG
Term	Through April 30, 2025
Furniture	Negotiable
Availability	Immediate

Features

- Efficient corner suite.
- 8-9 exterior offices, 1-2 conference rooms, reception, kitchen, and 9 workstations.
- 24-hour manned security on-site.
- Takami Sushi & Robata rooftop restaurant on-site.
- Convenient freeway access.
- Close proximity to retail amenities such as the Bloc, 7th & Fig, and Restaurant Row.

Map



For More Information

James Robbins
213.430.2446 direct
818.517.0296 mobile
james.robbs@cresa.com
BRE# 01944738

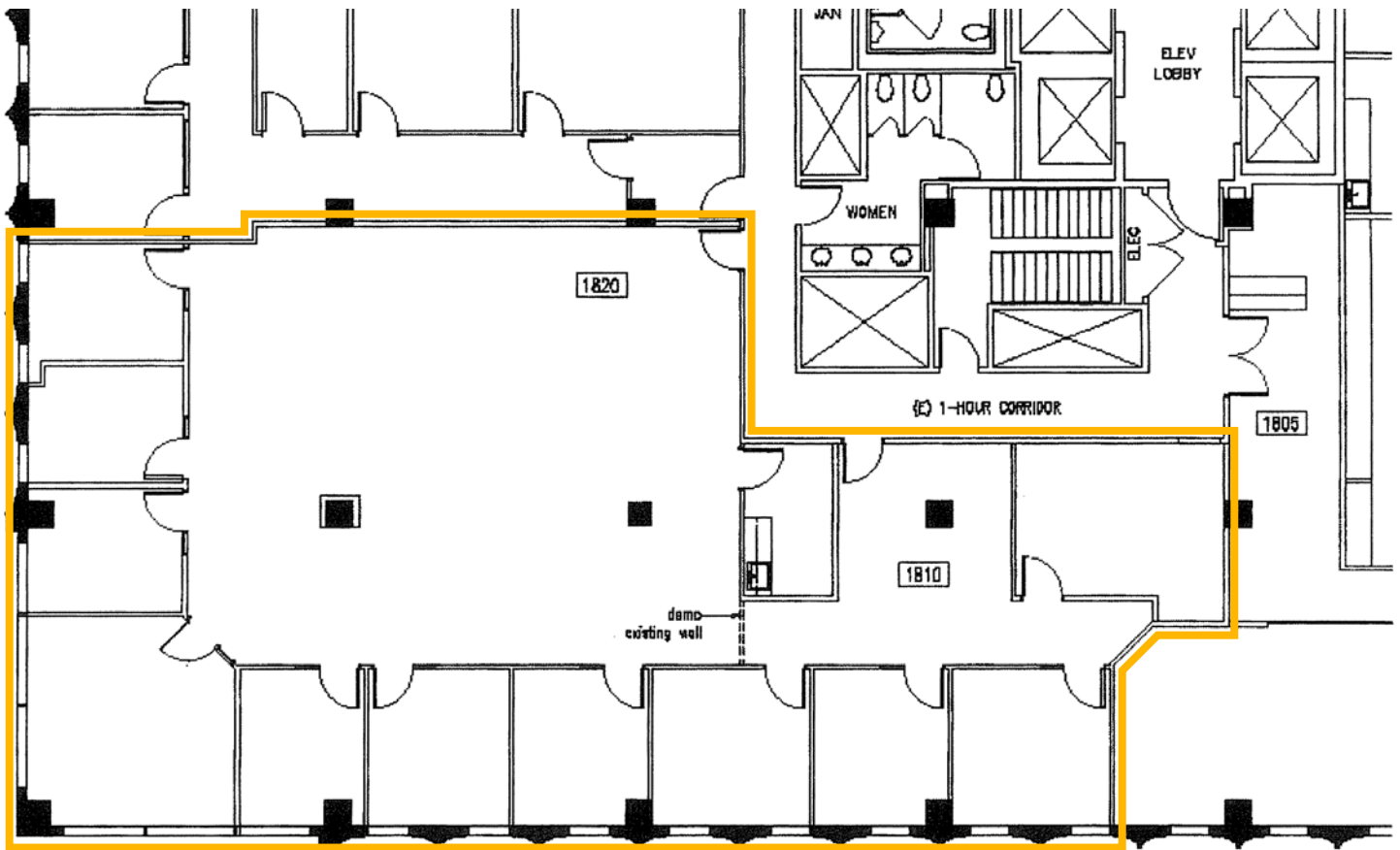
Even though obtained from sources deemed reliable, no warranty or representation, express or implied, is made as to the accuracy of the information herein, and it is subject to errors, omissions, change of price, rental or other conditions, withdrawal without notice, and to any special listing conditions imposed by our principals.



555 South Flower Street, Suite 4650, Los Angeles, CA 90071



Suite 1810 & 1820 - 4,311 SF



For More Information

James Robbins

213.430.2446 direct

818.517.0296 mobile

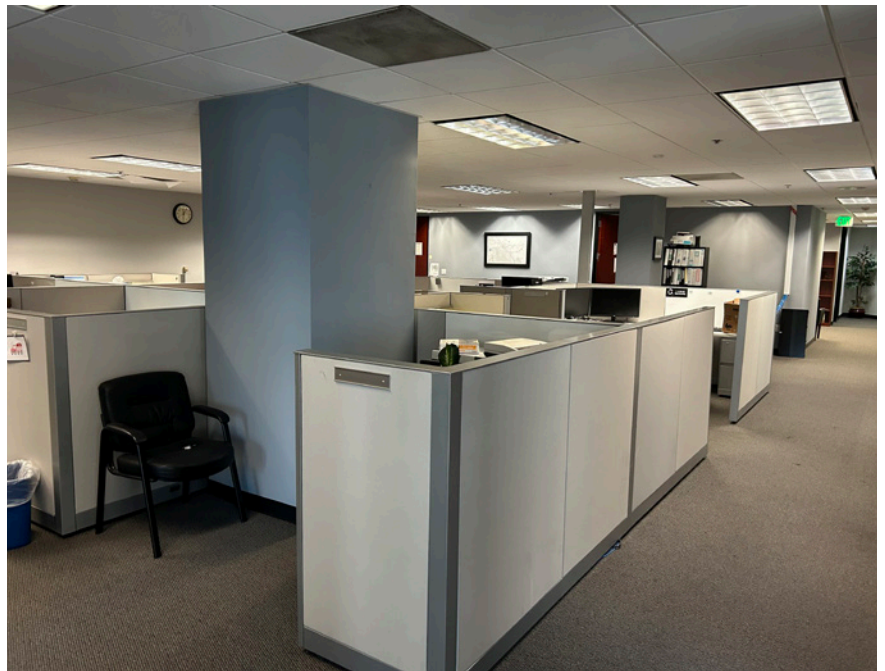
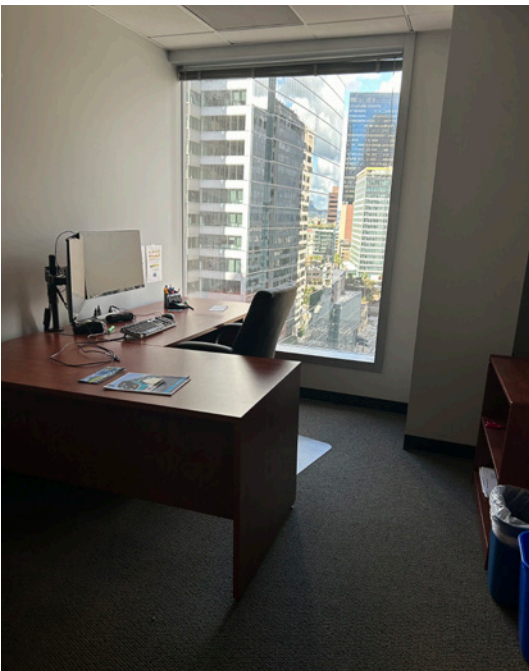
james.robbs@cresa.com

BRE# 01944738



811 Wilshire Boulevard
Los Angeles, CA 90017

Interior Photos



For More Information

James Robbins

213.430.2446 direct

818.517.0296 mobile

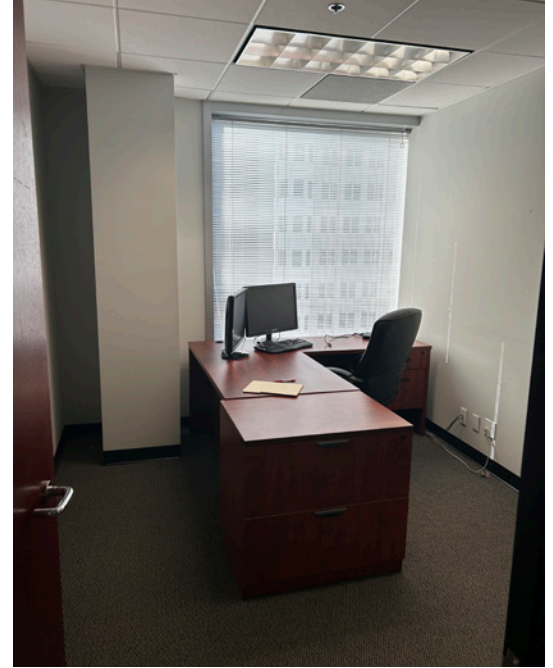
james.robbs@cresa.com

BRE# 01944738



811 Wilshire Boulevard
Los Angeles, CA 90017

Interior Photos



For More Information

James Robbins

213.430.2446 direct

818.517.0296 mobile

james.robbs@cresa.com

BRE# 01944738