

Highly Improved Plug & Play Sublease

\$50 AMEX Gift card for all tours! *

**Lincoln Technology Center
3601 Calle Tecate
Camarillo, CA 93012**

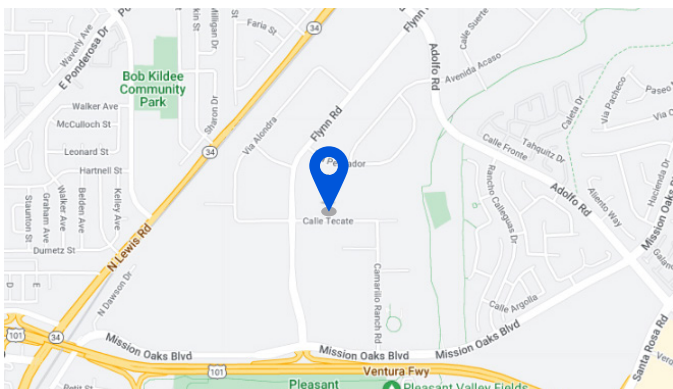
**Sublease
Available**

Space Profile

Premises	41,952 square feet total, easily divisible to deliver either 17,243 sf (Suite 201) , or 24,709 sf (Suite 200)
Rental Rate	\$1.35 PSF, FSG
Availability	Suite 200 (60 Days Notice) Suite 201 (Immediately)
Term	Through November 30, 2025 Longer term may be available
Parking	4/1,000 SF at no charge

*** Must be accompanied by tenant prospect, before 6/30/23**

Map



Features

- Creative/open plan office space, ideal for telemarketing/ call center operations
- Extensive window line
- Newly built improvements
- New furniture, fixtures and equipment available throughout
- Training rooms and yoga wellness rooms
- Approximately 23 private offices for both suites
- 239 workstations for both suites
- 2 computer monitors at every workstation
- Huddle room with whiteboard
- TV monitors throughout the space
- Mail rooms
- Beautiful executive conference rooms
- Extra-large custom employee dining lounges
- Nursing rooms
- Highly improved men's and women's restrooms
- Convenient 101 Freeway access
- Access to many retail amenities

For More Information

Mark Rauch
818.943.2959 mobile
mrauch@cresa.com
BRE# 01019455

David G. Kutzer
213.430.2444 direct
dkutzer@cresa.com
BRE# 01101412

555 South Flower Street, Suite 4650, Los Angeles, CA 90071



Even though obtained from sources deemed reliable, no warranty or representation, express or implied, is made as to the accuracy of the information herein, and it is subject to errors, omissions, change of price, rental or other conditions, withdrawal without notice, and to any special listing conditions imposed by our principals.



A hand-drawn floor plan of a police station layout. The plan includes various rooms and stations, with a legend indicating: A = ADMIN, C = Client Service, and CC = Call Center.

Legend:
A = ADMIN
C = Client Service
CC = Call Center

Rooms and Stations:

- Top Left:** Stations 101-110, 111-112, 113, 114, 115, 116, 117, 118, 119, 120, 121, 122, 123, 124, 125, 126, 127, 128, 129, 130, 131, 132, 133, 134, 135, 136, 137, 138, 139, 140, 141, 142, 143, 144, 145, 146, 147, 148, 149, 150, 151, 152, 153, 154, 155, 156, 157, 158, 159, 160, 161, 162, 163, 164, 165, 166, 167, 168, 169, 170, 171, 172, 173, 174, 175, 176, 177, 178, 179, 180, 181, 182, 183, 184, 185, 186, 187, 188, 189, 190, 191, 192, 193, 194, 195, 196, 197, 198, 199, 200, 201, 202, 203, 204, 205, 206, 207, 208, 209, 210, 211, 212, 213, 214, 215, 216, 217, 218, 219, 220, 221, 222, 223, 224, 225, 226, 227, 228, 229, 230, 231, 232, 233, 234, 235, 236, 237, 238, 239, 240, 241, 242, 243, 244, 245, 246, 247, 248, 249, 250, 251, 252, 253, 254, 255, 256, 257, 258, 259, 260, 261, 262, 263, 264, 265, 266, 267, 268, 269, 270, 271, 272, 273, 274, 275, 276, 277, 278, 279, 280, 281, 282, 283, 284, 285, 286, 287, 288, 289, 290, 291, 292, 293, 294, 295, 296, 297, 298, 299, 300, 301, 302, 303, 304, 305, 306, 307, 308, 309, 310, 311, 312, 313, 314, 315, 316, 317, 318, 319, 320, 321, 322, 323, 324, 325, 326, 327, 328, 329, 330, 331, 332, 333, 334, 335, 336, 337, 338, 339, 340, 341, 342, 343, 344, 345, 346, 347, 348, 349, 350, 351, 352, 353, 354, 355, 356, 357, 358, 359, 360, 361, 362, 363, 364, 365, 366, 367, 368, 369, 370, 371, 372, 373, 374, 375, 376, 377, 378, 379, 380, 381, 382, 383, 384, 385, 386, 387, 388, 389, 390, 391, 392, 393, 394, 395, 396, 397, 398, 399, 400, 401, 402, 403, 404, 405, 406, 407, 408, 409, 410, 411, 412, 413, 414, 415, 416, 417, 418, 419, 420, 421, 422, 423, 424, 425, 426, 427, 428, 429, 430, 431, 432, 433, 434, 435, 436, 437, 438, 439, 440, 441, 442, 443, 444, 445, 446, 447, 448, 449, 450, 451, 452, 453, 454, 455, 456, 457, 458, 459, 460, 461, 462, 463, 464, 465, 466, 467, 468, 469, 470, 471, 472, 473, 474, 475, 476, 477, 478, 479, 480, 481, 482, 483, 484, 485, 486, 487, 488, 489, 490, 491, 492, 493, 494, 495, 496, 497, 498, 499, 500, 501, 502, 503, 504, 505, 506, 507, 508, 509, 510, 511, 512, 513, 514, 515, 516, 517, 518, 519, 520, 521, 522, 523, 524, 525, 526, 527, 528, 529, 530, 531, 532, 533, 534, 535, 536, 537, 538, 539, 540, 541, 542, 543, 544, 545, 546, 547, 548, 549, 550, 551, 552, 553, 554, 555, 556, 557, 558, 559, 560, 561, 562, 563, 564, 565, 566, 567, 568, 569, 570, 571, 572, 573, 574, 575, 576, 577, 578, 579, 580, 581, 582, 583, 584, 585, 586, 587, 588, 589, 590, 591, 592, 593, 594, 595, 596, 597, 598, 599, 600, 601, 602, 603, 604, 605, 606, 607, 608, 609, 610, 611, 612, 613, 614, 615, 616, 617, 618, 619, 620, 621, 622, 623, 624, 625, 626, 627, 628, 629, 630, 631, 632, 633, 634, 635, 636, 637, 638, 639, 640, 641, 642, 643, 644, 645, 646, 647, 648, 649, 650, 651, 652, 653, 654, 655, 656, 657, 658, 659, 660, 661, 662, 663, 664, 665, 666, 667, 668, 669, 670, 671, 672, 673, 674, 675, 676, 677, 678, 679, 680, 681, 682, 683, 684, 685, 686, 687, 688, 689, 690, 691, 692, 693, 694, 695, 696, 697, 698, 699, 700, 701, 702, 703, 704, 705, 706, 707, 708, 709, 710, 711, 712, 713, 714, 715, 716, 717, 718, 719, 720, 721, 722, 723, 724, 725, 726, 727, 728, 729, 730, 731, 732, 733, 734, 735, 736, 737, 738, 739, 740, 741, 742, 743, 744, 745, 746, 747, 748, 749, 750, 751, 752, 753, 754, 755, 756, 757, 758, 759, 760, 761, 762, 763, 764, 765, 766, 767, 768, 769, 770, 771, 772, 773, 774, 775, 776, 777, 778, 779, 780, 781, 782, 783, 784, 785, 786, 787, 788, 789, 790, 791, 792, 793, 794, 795, 796, 797, 798, 799, 800, 801, 802, 803, 804, 805, 806, 807, 808, 809, 810, 811, 812, 813, 814, 815, 816, 817, 818, 819, 820, 821, 822, 823, 824, 825, 826, 827, 828, 829, 830, 831, 832, 833, 834, 835, 836, 837, 838, 839, 840, 841, 842, 843, 844, 845, 846, 847, 848, 849, 850, 851, 852, 853, 854, 855, 856, 857, 858, 859, 860, 861, 862, 863, 864, 865, 866, 867, 868, 869, 870, 871, 872, 873, 874, 875, 876, 877, 878, 879, 880, 881, 882, 883, 884, 885, 886, 887, 888, 889, 890, 891, 892, 893, 894, 895, 896, 897, 898, 899, 900, 901, 902, 903,

David G. Kutzer
213.430.2444 direct
dkutzer@cresa.com
BRE# 01101412

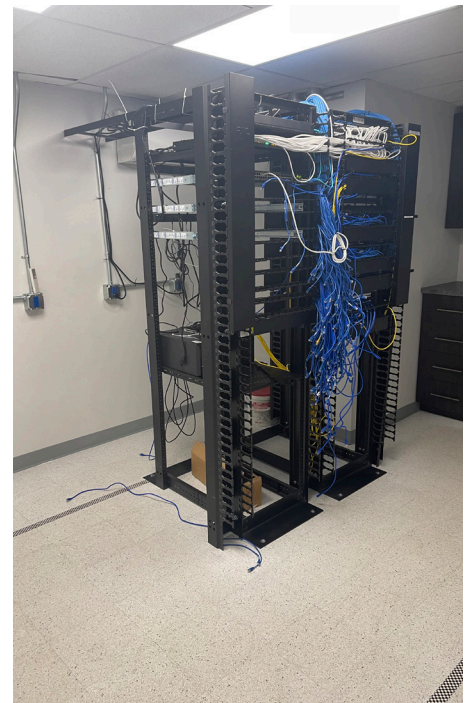
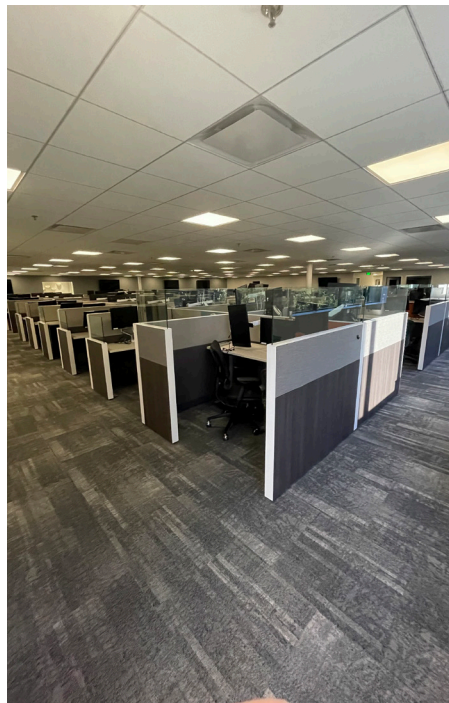
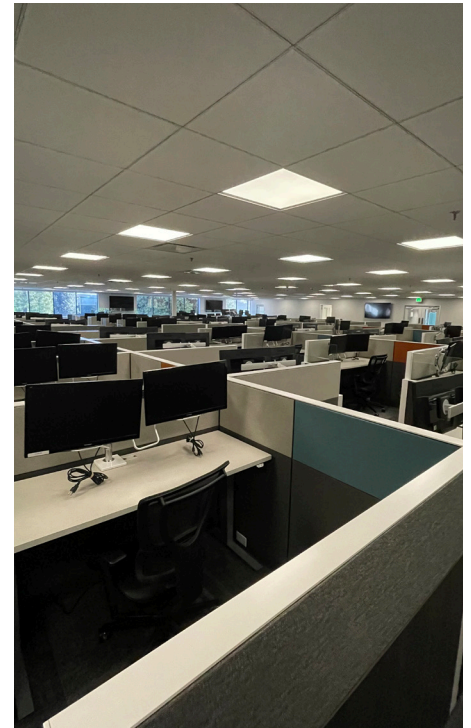


The floor plan shows a large building with a central corridor system. On the left side, there are several classrooms and a large hall. The top right corner features a library and a computer lab. The bottom right corner contains a music room, a drama room, and a sports hall. A canteen is located at the bottom center. The plan includes numerous smaller rooms, restrooms, and storage areas. The layout is designed to facilitate movement between different functional areas of the school.

David G. Kutzer
213.430.2444 direct
dkutzer@cresa.com
BRE# 01101412



3601 Calle Tecate
Camarillo, CA 93012



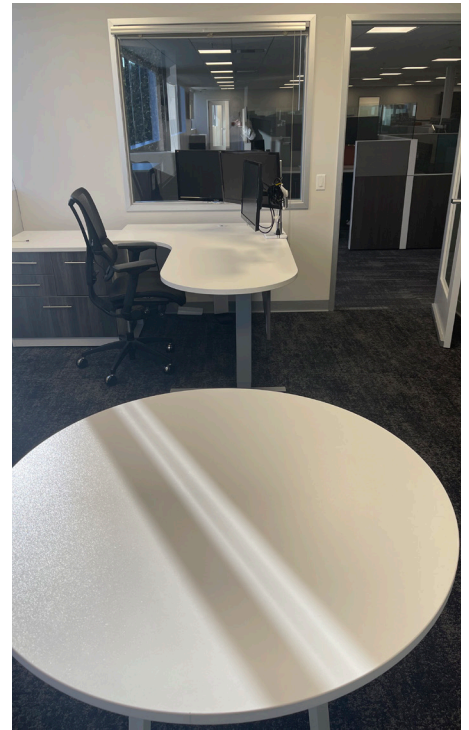
For More Information

Mark Rauch
818.943.2959 mobile
mrauch@cresa.com
BRE# 01019455

David G. Kutzer
213.430.2444 direct
dkutzer@cresa.com
BRE# 01101412



3601 Calle Tecate
Camarillo, CA 93012



For More Information

Mark Rauch
818.943.2959 mobile
mrauch@cresa.com
BRE# 01019455

David G. Kutzer
213.430.2444 direct
dkutzer@cresa.com
BRE# 01101412