



Industrial Sale Offering

3217 S Garfield Ave & 6611 Bandini Blvd Commerce, CA



For Additional Information Please Contact:

James Friedrich
Cresa
C: (310) 694-2376
E: jfriedrich@cresa.com
BRE#: 01919846

Griffin Farriss
Cresa
C: (561) 676-2601
E: gfarriss@cresa.com
BRE#: 01939767

Property Overview



Property Highlights

Location

The property is located in a high identity corner of Garfield and Bandini with access to the I-5 Freeway only a couple of blocks away.

Scale

At 160,537 SF, this is one of the larger industrial availabilities to hit the market for sale in the Central Los Angeles Submarket this year presenting an investor or owner-user a rare opportunity to acquire an industrial asset over 100,000 SF in infill Los Angeles County.

Lease Expirations/Flexibility

With almost all of the leases/subleases set to expire in the near future, the property provides significant flexibility to a Buyer to re-tenant, redevelop, or occupy the property.

Yard Area

The buildings positioning on the parcel provides secured yard areas or covered outdoor storage on all four sides of the building.

Loading

Property has dock high loading making it suitable for distribution.

Rail

The Property has existing rail infrastructure.

The information contained in this document has been obtained from sources believed reliable. While Cresa does not doubt its accuracy, Cresa has not verified it and makes no guarantee, warranty, or representation about it. It is your responsibility to independently confirm its accuracy and completeness.

Property Information

Building Specs.

Address

3217 S Garfield Ave & 6611 Bandini Blvd

Year Built

1953

Building Area

160,537 SF

Land Area

7.47 Acres (325,393 SF)

Clear Height

16'-18'

Office Space

Approx. 17,000 SF 2-Story Main Office

Docks

14 Positions

Drive-Ins

10 Doors

Sprinklers

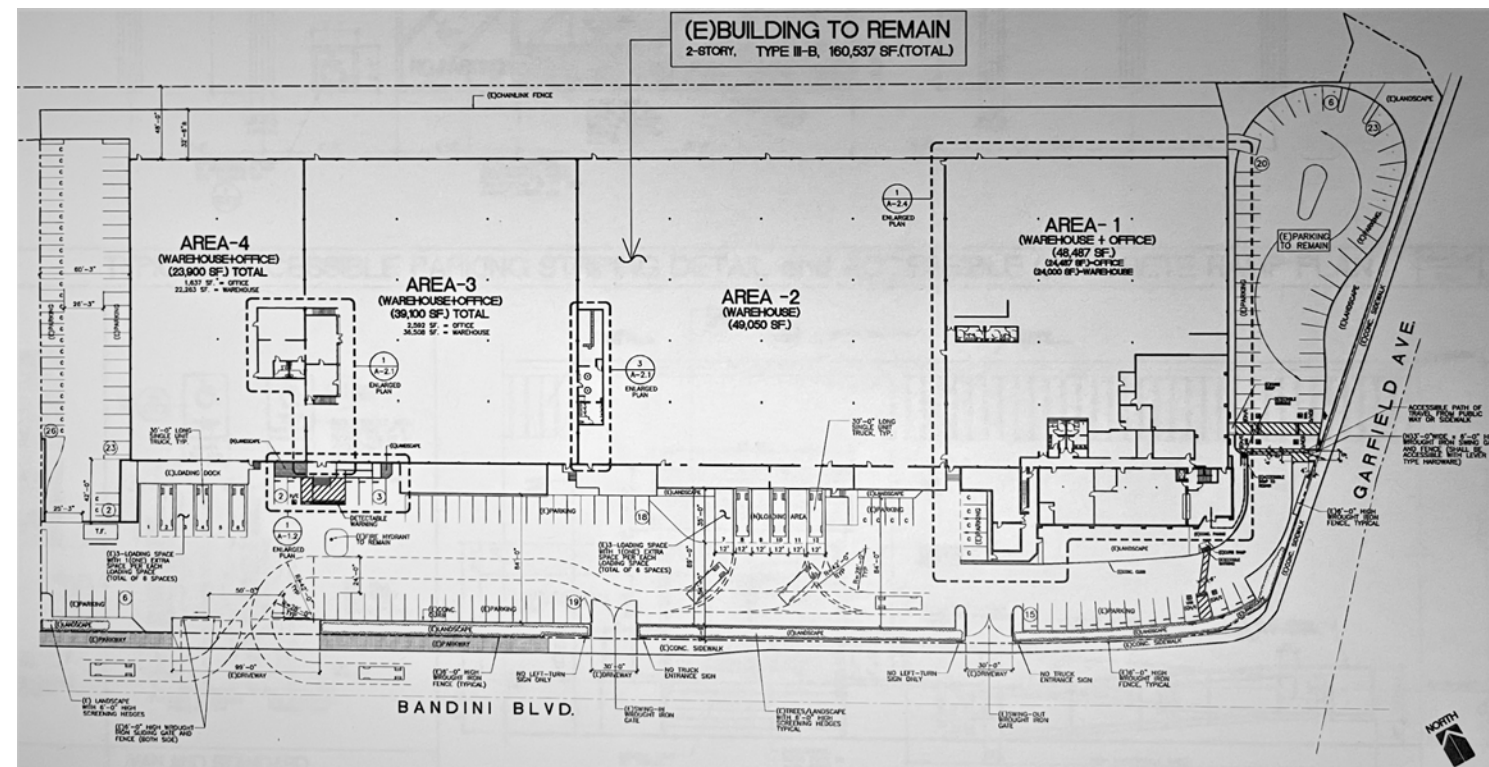
Fully Sprinklered

Power

8,000 Amps

Parking Ratio

223 Stalls



The information contained in this document has been obtained from sources believed reliable. While Cresa does not doubt its accuracy, Cresa has not verified it and makes no guarantee, warranty, or representation about it. It is your responsibility to independently confirm its accuracy and completeness.