

Warner Center Tower 6 21700 Oxnard Street Woodland Hills, CA 91367

Sublease Available

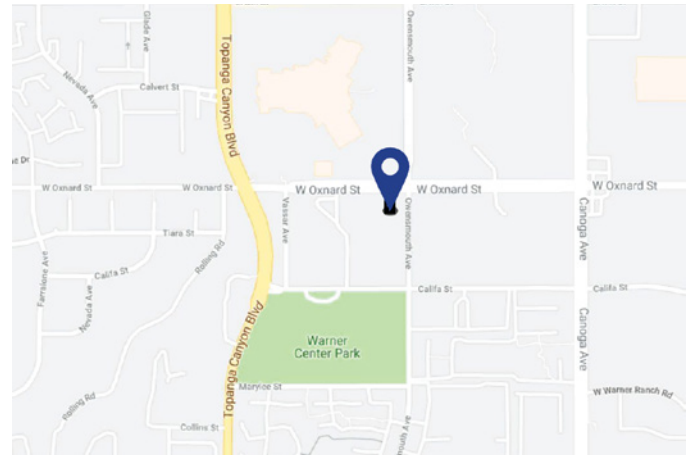
Space Profile

Premises	2,971 SF (Suite 460)
Rental Rate	Negotiable
Availability	Immediate
Term	Through October 2021
Parking	3/1,000 SF \$125 Reserved \$75 Unreserved

Features

- Open to subleasing single offices
- Plug and Play Sublease
- Near many area amenities including restaurants hotels and banking
- Close proximity to 101 Freeway
- Onsite dry cleaner, restaurants and health club

Map



For More Information

Mark Rauch
213.430.2469 direct
mrauch@cresa.com
BRE# 01019455

Even though obtained from sources deemed reliable, no warranty or representation, express or implied, is made as to the accuracy of the information herein, and it is subject to errors, omissions, change of price, rental or other conditions, withdrawal without notice, and to any special listing conditions imposed by our principals.



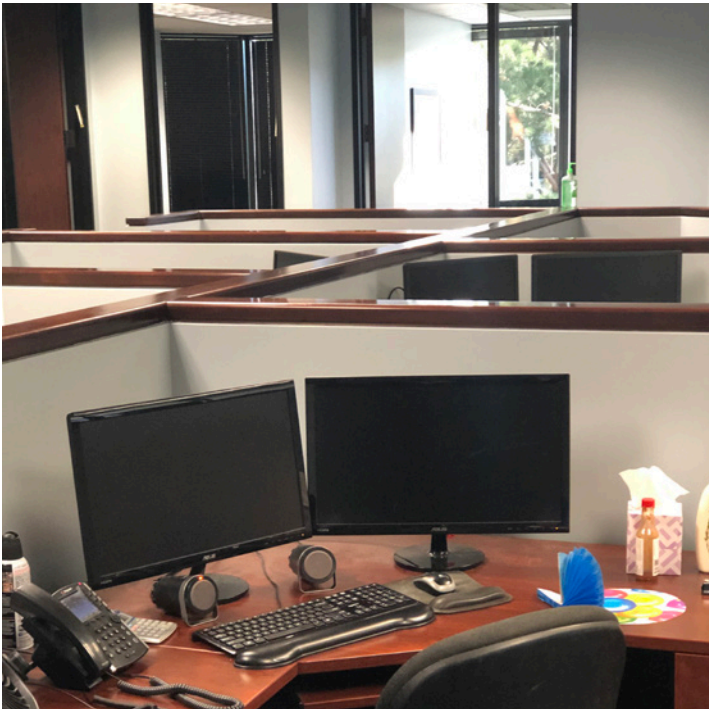
515 South Flower Street, Suite 3000, Los Angeles, CA 90071





21700 Oxnard Street
Woodland Hills, CA 91367

Suite 460 - 2,971 SF



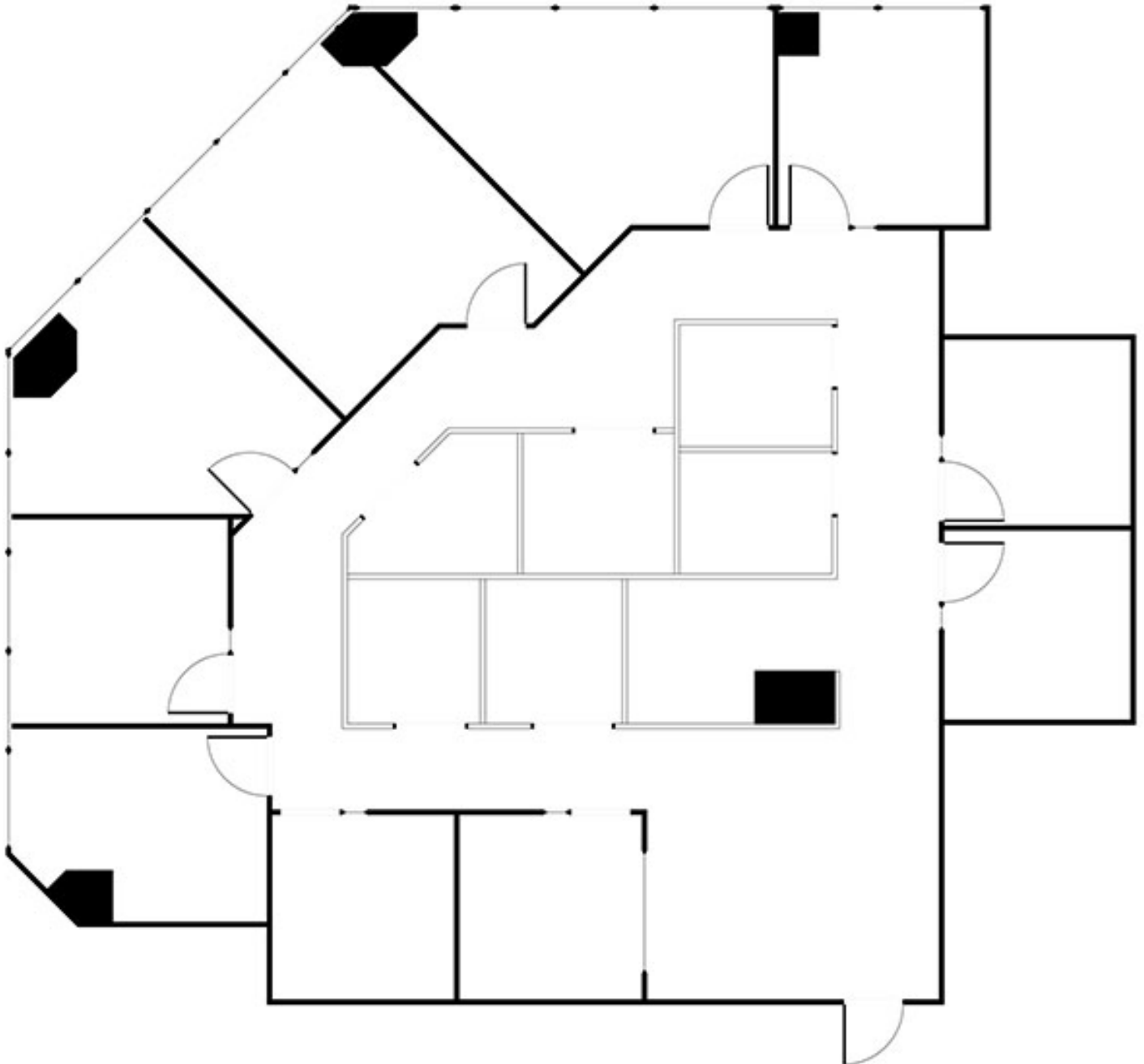
For More Information

Mark Rauch
213.430.2469 direct
mrauch@cresa.com
BRE# 01019455



21700 Oxnard Street
Woodland Hills, CA 91367

Suite 460 - 2,971 SF



For More Information

Mark Rauch
213.430.2469 direct
mrauch@cresa.com
BRE# 01019455