

Anderson Towers 1900 Avenue of the Stars Los Angeles, CA

Sublease Available

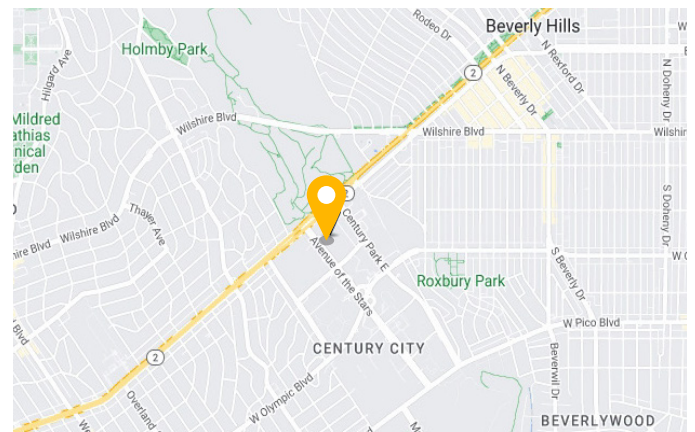
Space Profile

Premises	1,811 SF (Suite 330)
Rental Rate	Negotiable
Availability	Immediate
Term	Through April 30, 2024
Parking	3/1000 at prevailing rates

Features

- Efficient, plug and play professional space featuring a large conference room and two private offices on the window line
- The building and project is current undergoing a multimillion dollar renovation of the building lobby and common areas, including five acres of beautifully manicured outdoor spaces/lawns offering office-work lifestyle unsurpassed in Century City.

Map



For More Information

David Kutzer
213.819.4691
dkutzer@cresa.com
BRE# 01101412

Arielle Hebein
213.430.2455
ahebein@cresa.com
BRE# 02213827

Even though obtained from sources deemed reliable, no warranty or representation, express or implied, is made as to the accuracy of the information herein, and it is subject to errors, omissions, change of price, rental or other conditions, withdrawal without notice, and to any special listing conditions imposed by our principals.



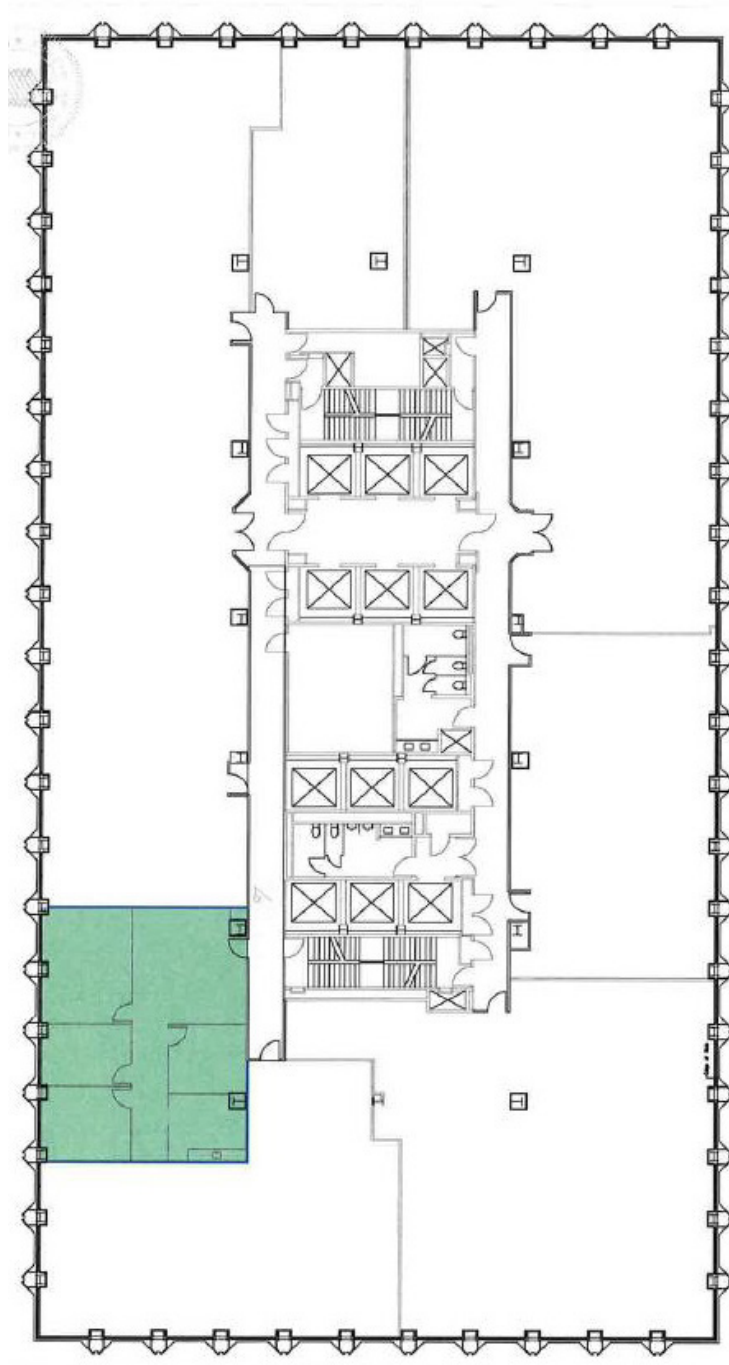
555 South Flower Street, Suite 4650, Los Angeles, CA 90071





**1900 Avenue of the Stars
Los Angeles, CA 90067**

Suite 330 - 1,811 SF



For More Information

David Kutzer
213.819.4691
dkutzer@cresa.com
BRE# 01101412

Arielle Hebein
213.430.2455
ahebein@cresa.com
BRE# 02213827



1900 Avenue of the Stars
Los Angeles, CA 90067

Interior Photos



For More Information

David Kutzer
213.819.4691
dkutzer@cresa.com
BRE# 01101412

Arielle Hebein
213.430.2455
ahebein@cresa.com
BRE# 02213827