



**1444 9th Street
Santa Monica, CA 90401**

**Sublease
Available**

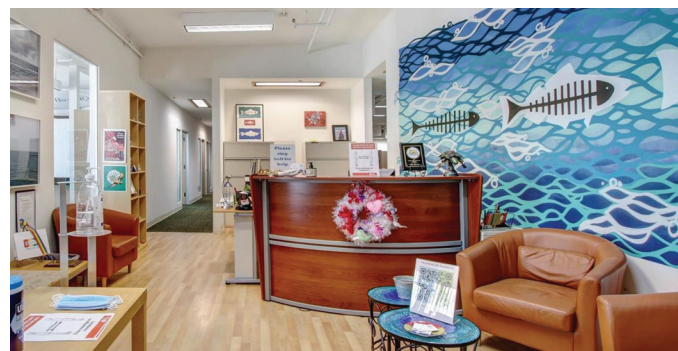
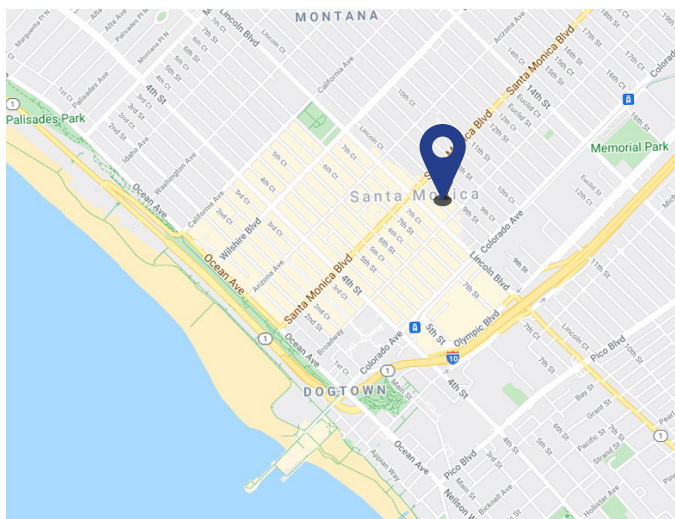
Space Profile

Premises	7,951 SF (2nd Floor)
Rental Rate	Withheld
Availability	Immediate
Term	Through April 30, 2026
Parking	22 reserved parking spaces

Features

- 15 offices, 21 workstations and 1 conference room
- Furniture negotiable
- Large private patio space
- 500 sf of ground floor storage available
- 6 blocks from 3rd Street Promenade
- 2 blocks from Colorado Blvd & Lincoln Blvd Bus Stop
- Subterranean parking
- 8 blocks from Downtown Santa Monica Expo Line

Map



For More Information

James Robbins
213.430.2446 direct
818.517.0296 mobile
james.robbs@cresa.com
BRE# 01944738

Brett Polan
213.341.4433 direct
916.995.1610 mobile
bpolan@cresa.com
BRE# 02098425

515 South Flower Street, Suite 3000, Los Angeles, CA 90071

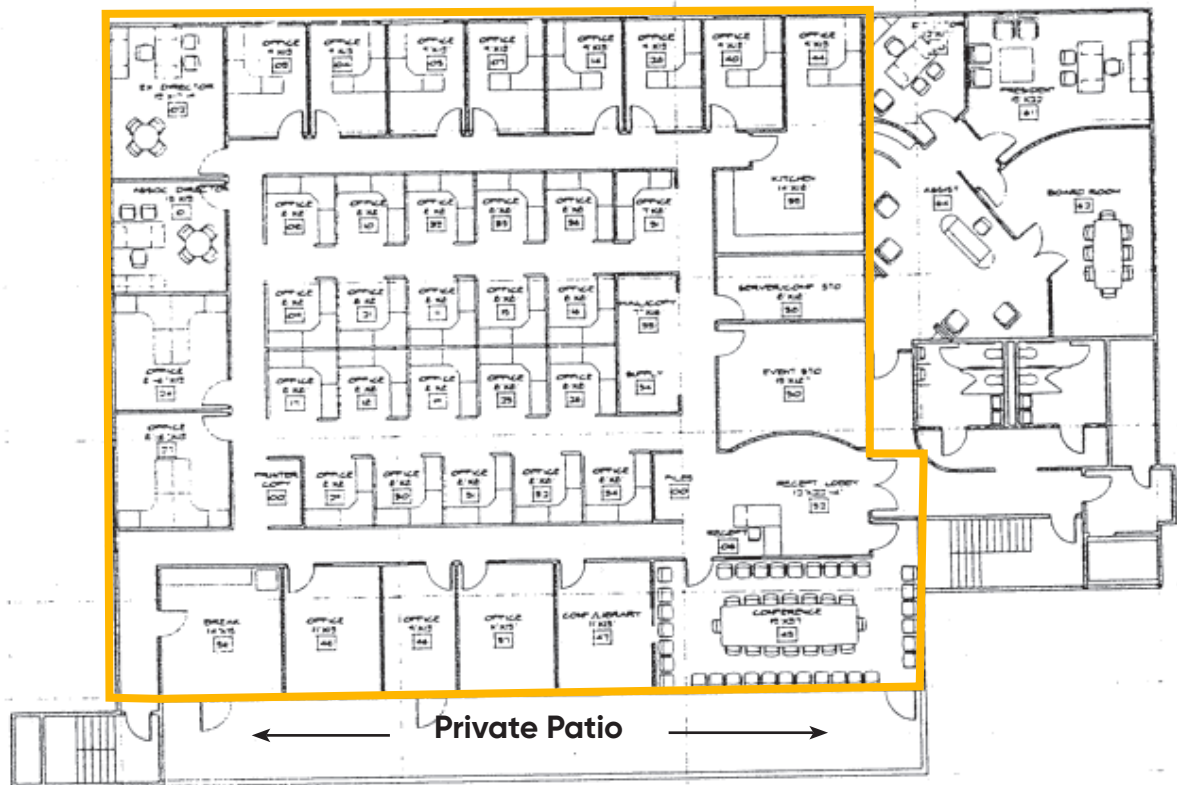


Even though obtained from sources deemed reliable, no warranty or representation, express or implied, is made as to the accuracy of the information herein, and it is subject to errors, omissions, change of price, rental or other conditions, withdrawal without notice, and to any special listing conditions imposed by our principals.



1444 9th Street
Santa Monica, CA 90401

2nd Floor - 7,951 SF



For More Information

James Robbins

213.430.2446 direct
818.517.0296 mobile
james.robbs@cresa.com
BRE# 01944738

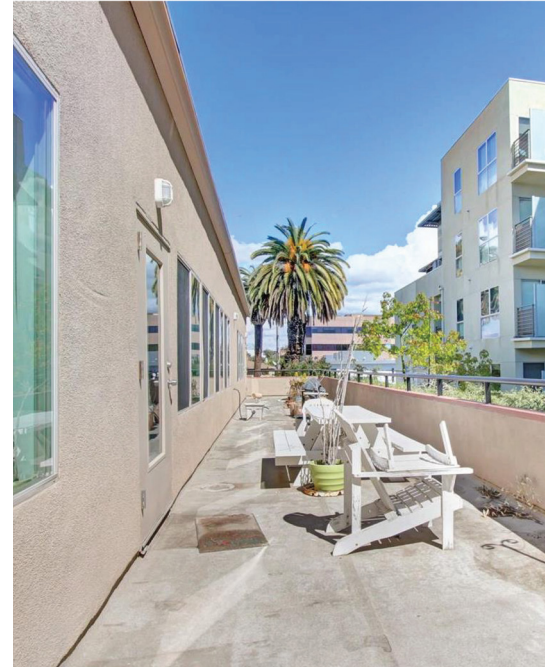
Brett Polan

213.341.4433 direct
916.995.1610 mobile
bpolan@cresa.com
BRE# 02098425



1444 9th Street
Santa Monica, CA 90401

Interior Photos



For More Information

James Robbins

213.430.2446 direct
818.517.0296 mobile
james.robbs@cresa.com
BRE# 01944738

Brett Polan

213.341.4433 direct
916.995.1610 mobile
bpolan@cresa.com
BRE# 02098425



1444 9th Street
Santa Monica, CA 90401

Interior Photos



For More Information

James Robbins

213.430.2446 direct
818.517.0296 mobile
james.robbsins@cresa.com
BRE# 01944738

Brett Polan

213.341.4433 direct
916.995.1610 mobile
bpolan@cresa.com
BRE# 02098425