



# Warehouse Available

10843 New Jersey St  
Redlands, CA

## Space Profile

<b>Premises</b>	30,000-70,000 SF
<b>Asking Rent</b>	Please Inquire
<b>Occupancy</b>	30 Days
<b>Term</b>	1-Year Maximum
<b>Ceiling Height</b>	36'
<b>Year Built</b>	2022
<b>Loading Docks</b>	3-4
<b>Grade Level</b>	1-2
<b>Sprinklers</b>	ESFR

## Features

- **Short Term Sublease:** Sublandlord seeking sublease terms of 1-year or less.
- **Dead Storage Preferred:** Sublandlord's ideal subtenant will be a dead storage user. Sublandlord may consider providing a small individual office to a subtenant.
- **New Construction:** Newly constructed Class A facility.
- **Loading:** Dock High and Grade Level loading available.
- **Restrooms:** Restrooms are potentially available.

## For More Information

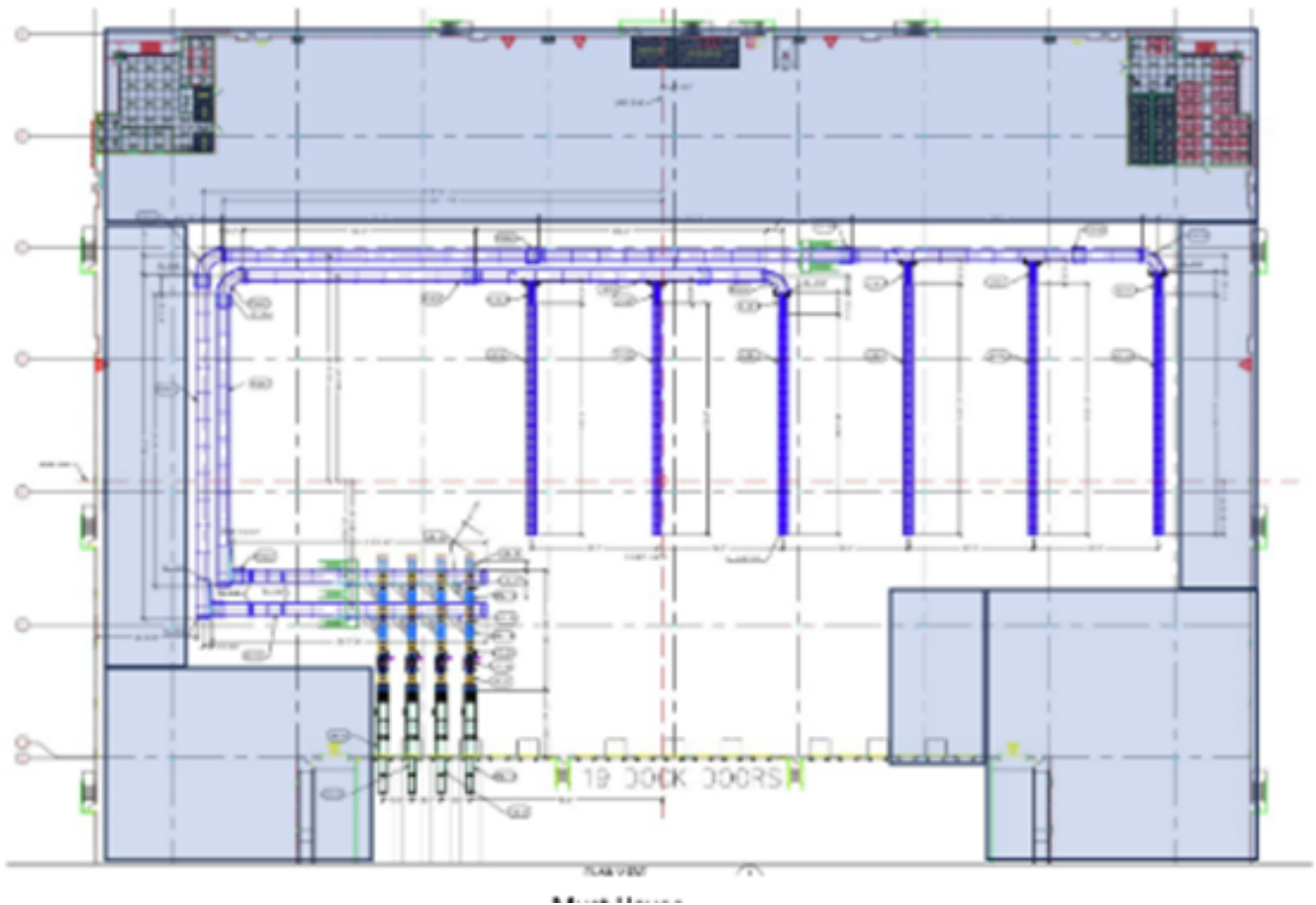
**Cresa**  
555 S Flower Street  
Suite 4650  
Los Angeles, CA 90071  
cresa.com

**James Friedrich**  
310.694.2376 mobile  
jfriedrich@cresa.com  
BRE# 01919846

**Mason Jandro**  
951.833.1804 mobile  
mjandro@cresa.com  
BRE# 02085317

Even though obtained from sources deemed reliable, no warranty or representation, express or implied, is made as to the accuracy of the information herein, and it is subject to errors, omissions, change of price, rental or other conditions, withdrawal without notice, and to any special listing conditions imposed by our principals.





**For More Information**

**Cresa**  
555 S Flower Street  
Suite 4650  
Los Angeles, CA 90071  
cresa.com

**James Friedrich**  
310.694.2376 mobile  
jfriedrich@cresa.com  
BRE# 01919846

**Mason Jandro**  
951.833.1804 mobile  
mjandro@cresa.com  
BRE# 02085317