



# Museum Medical Tower

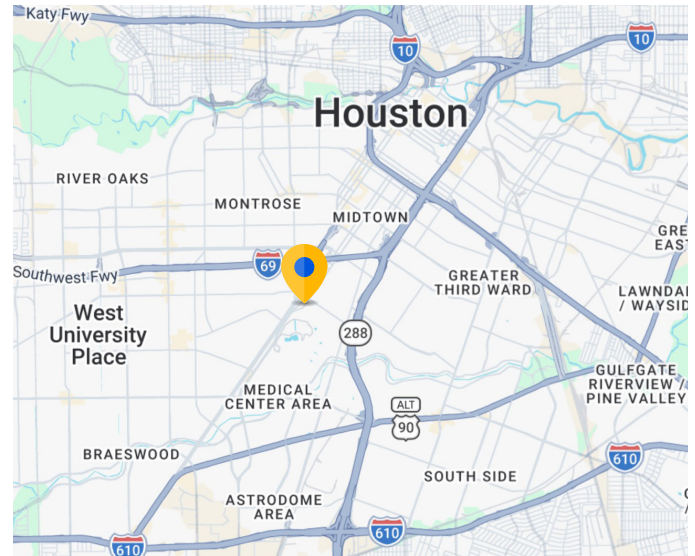
1213 Hermann Dr | Houston, TX, 77004

## Snapshot

Premises:	Suite 350: 1,909 RSF
Sublease Term:	Expires December 31, 2026
Asking Rent:	Negotiable
Estimated OpEx:	Full Service Gross

## Features

- » Move-in ready condition; Former spec suite
- » 4-5 exam rooms; private office; private restroom; break room
- » Upgraded finishes & lighting throughout
- » Tunnel connectivity to HCA Houston-Healthcare Medical Center
- » Walkable to Hermann Park, Hotel Zaza, MFAH, HMNS, & Light Rail
- » Attached parking garage
- » Building is serviced by Lunchdrop



**Cresa**  
 777 Post Oak Blvd  
 Suite 360  
 Houston, TX 77056

[cresa.com/houston](http://cresa.com/houston)



**Margaret Ann Cook**  
 Senior Vice President  
 713.275.3797  
[macook@cresa.com](mailto:macook@cresa.com)



**Emily Howard-Wilson**  
 Principal  
 713.275.3808  
[ehwilson@cresa.com](mailto:ehwilson@cresa.com)

# Sublease

# Museum Medical Tower

1213 Hermann Dr | Houston, TX 77004

Suite 350: 1,909 RSF



## For More Information

Margaret Ann Cook  
713.275.3797 | macook@cresa.com

Emily Howard-Wilson  
713.275.3808 | ehwilson@cresa.com

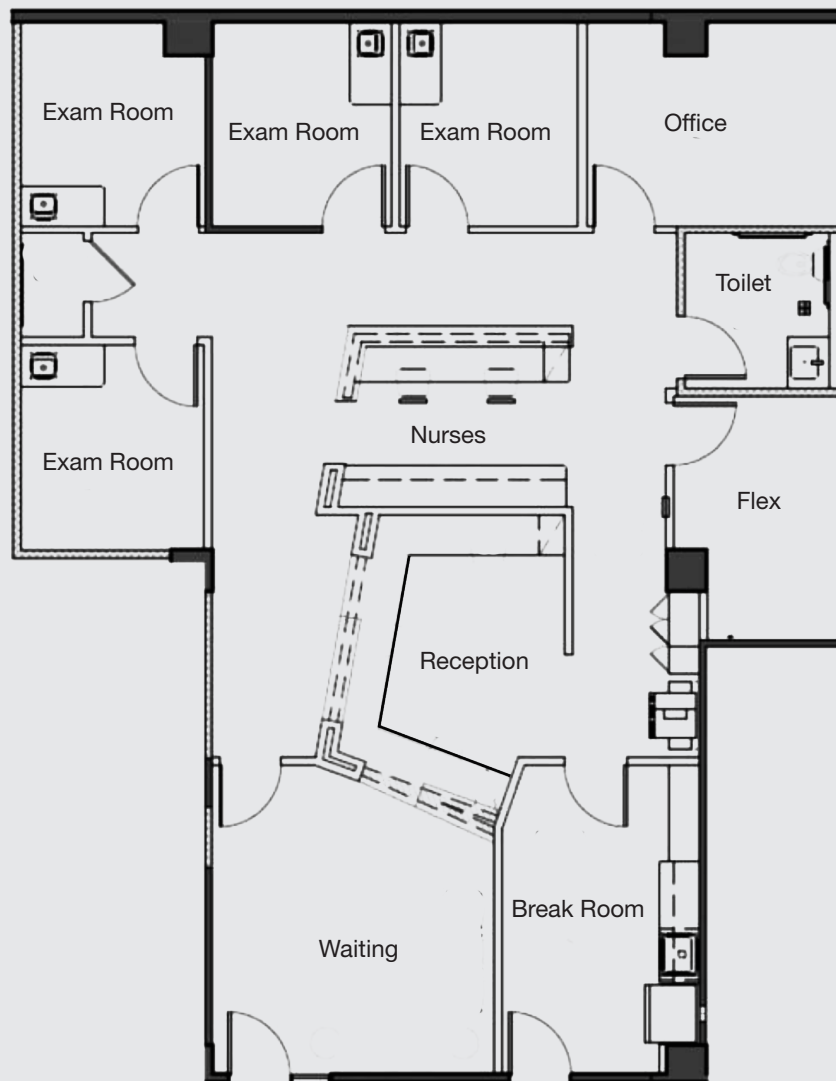


# Sublease

# Museum Medical Tower

1213 Hermann Dr | Houston, TX 77004

Suite 350: 1,909 RSF



## For More Information

Margaret Ann Cook  
713.275.3797 | [macook@cresa.com](mailto:macook@cresa.com)

Emily Howard-Wilson  
713.275.3808 | [ehwilson@cresa.com](mailto:ehwilson@cresa.com)



