

Liberty Place Professional Centre

3,606 sf Available for Sublease



VIEW THE
VIRTUAL TOUR **360**

Photo credit: CoStar Group

Byron Wakeling
780.993.2367
bwakeling@cresa.com

cresa

Liberty Place Professional Centre



Space Profile

Address:	111 Broadway Boulevard
Sublandlord:	Celtic Management
Subpremises:	Suite 216: 3,606 sf Additional main floor storage and office space available. Contact listing agents for details.
Availability:	Negotiable
Term Expiry:	Expires January 31, 2027
Net Rental Rate:	Negotiable
T.I.A.:	As is
Op. Costs & Taxes:	\$10.00 per sf (est. 2025)
Parking:	Surface - scramble

Features & Amenities

- Suite is in excellent condition with high-end improvements throughout
- Office intensive layout makes suite ideal for accounting firms, insurance, law office and other professional user groups
- Furniture is negotiable

Suite 216
3,606 sf

10 perimeter offices

2 interior offices

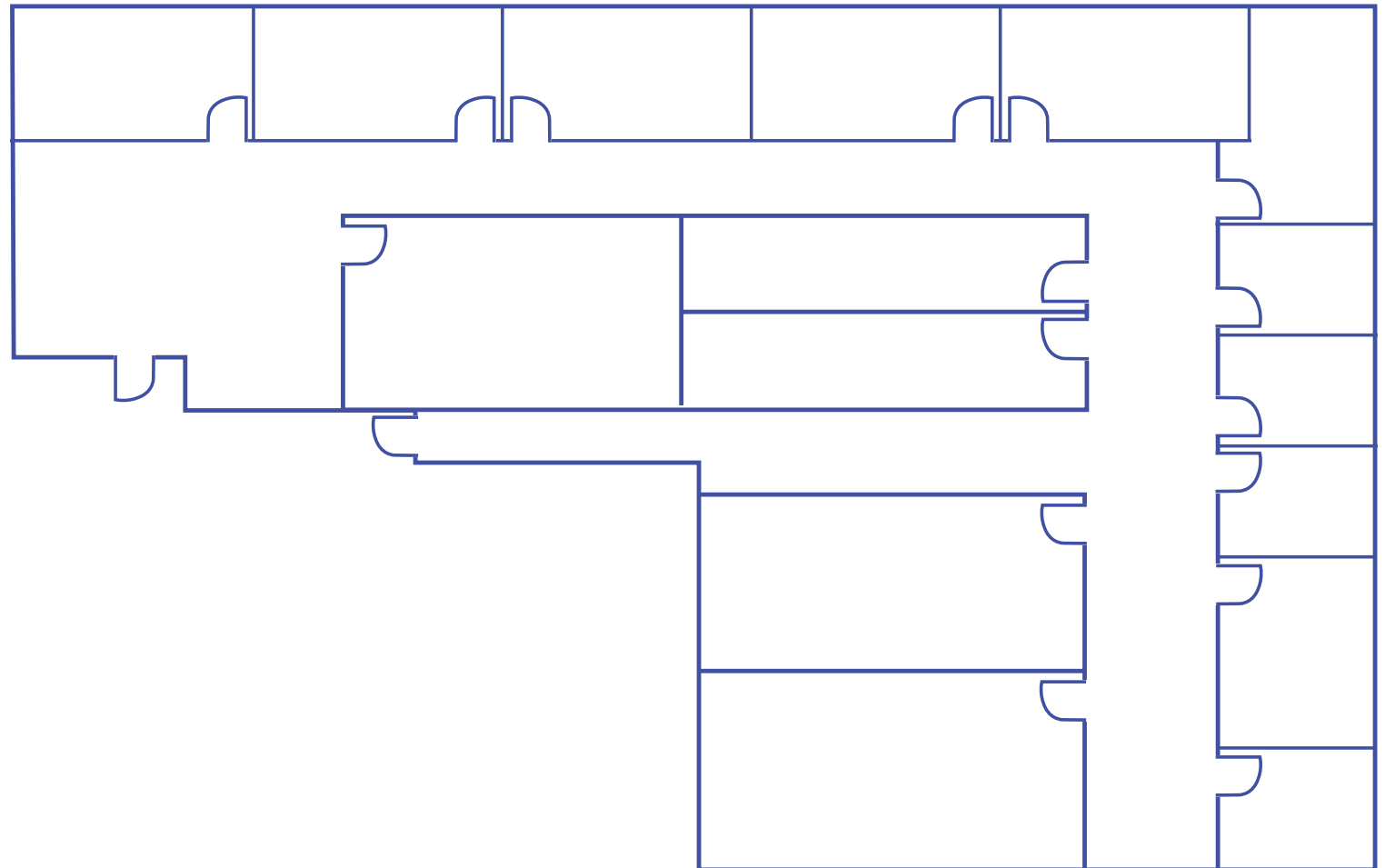
Reception/waiting area

Boardroom

Storage room

Filing room

Kitchen



Liberty Place Professional Centre

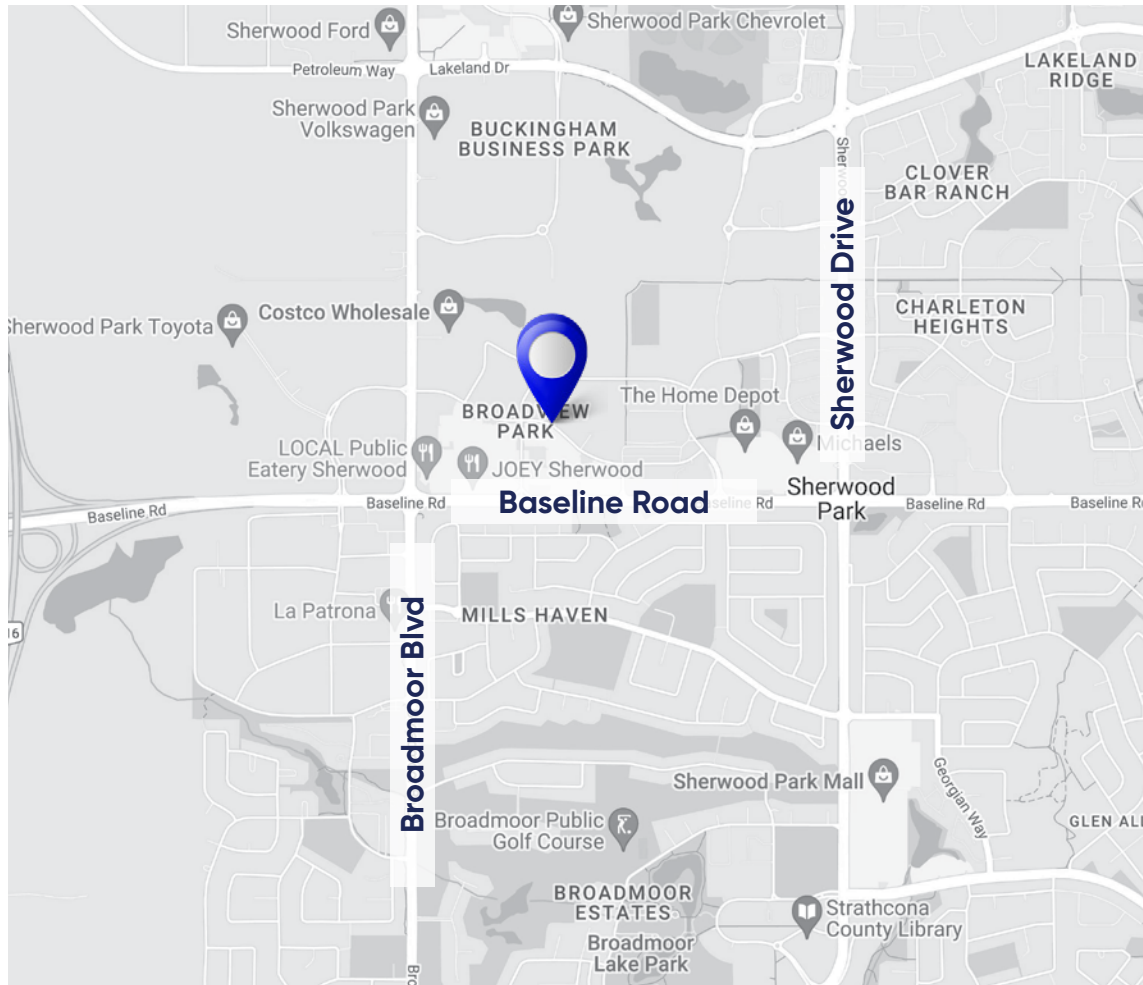
Fully furnished office suite for sublease in Sherwood Park

This modern, well-built out space is ideally suited for professional user groups looking for a high quality office to house their business. Perimeter offices are spacious and flooded with natural lighting. The suite also features ample storage and filing areas and high quality finishes in the kitchen

The building is conveniently located near Baseline Road giving convenient access to downtown Edmonton and Anthony Henday Drive. Several amenities are within the immediate area.



Liberty Place Professional Centre



Agent Information

Byron Wakeling
780.993.2367
bwakeling@cresa.com

Cresa

10020 - 101A Avenue, Suite 1980 | Edmonton, AB T5J 3G2 | 780.900.8781 cresa.com

Even though obtained from sources deemed reliable, no warranty or representation, express or implied, is made as to the accuracy of the information herein, and it is subject to errors, omissions, change of price, rental or other conditions, withdrawal without notice, and to any special listing conditions imposed by our principals.

