

FOR SALE

Modern, developed office space

PRICE REDUCTION:
\$599,000



Lakeside Business Park
2333 - 90b Street SW

1,619 sf of office space in Ellerslie Industrial Business Park

Contact:

Byron Wakeling

780.993.2367

bwakeling@cresa.com

Dan Budman

587.338.3338

dbudman@cresa.com

Nicholas Farnden

780.938.7343

nfarnden@cresa.com

cresa 

LAKESIDE BUSINESS PARK

Property Profile

Address: #201, 5333 - 90b Street SW

Year of Completion: 2012

Legal Description: Condominium Plan 1524418 Unit 12

Rentable Area: 1,619 sf

Asking Price: ~~\$645,000 or \$398.39 per sf~~
PRICE REDUCTION
\$599,000 OR \$369.98 per sf

2024 Property Taxes: \$11,193.88

Condo Fees: \$591.73 per month

Land Use: EIB - Ellerslie Industrial Business

Parking: Scramble

Access: Second Floor Walk up

Property Information

Enjoy a combination of open concept and private functional offices ideally suited for small businesses that require a mix of office and open area.

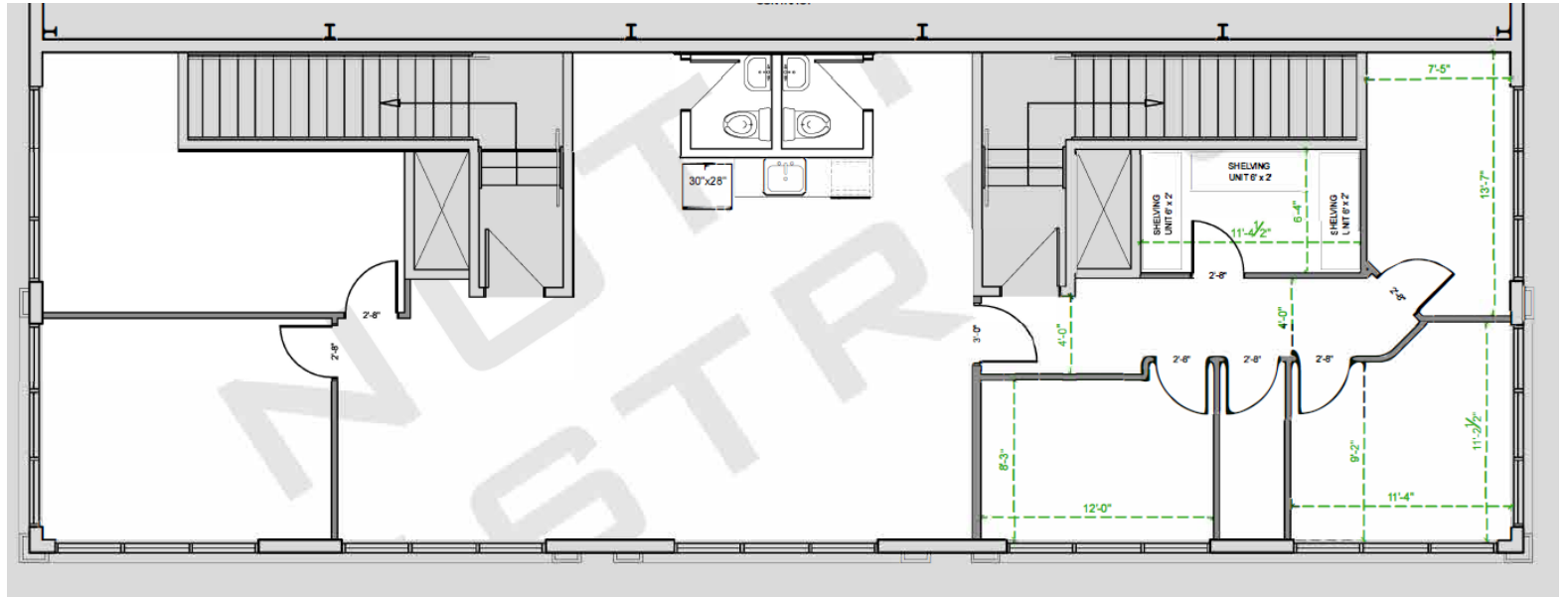
This bright and airy office space has four private offices, a meeting room, storage room with an open concept work area and kitchen.

Unimpeded views of the Summerside Lake make this a great office environment with floor to ceiling windows allowing for natural light and serene views.



Suite 201:
1,619 sf

Hybrid office that is open concept with private functional offices



LAKESIDE BUSINESS PARK



Drive times to major arteries in the area

Situated in the Ellerslie Business Park, the suite is the perfect combination of business meets community with lake views, easy access to South Edmonton and surrounding amenities.

Within a 10 minute drive time to Calgary Trail via Ellerslie Road and Parsons Road SW.

Contact

Byron Wakeling

780.993.2367

bwakeling@cresa.com

Dan Budman

587.338.3338

dbudman@cresa.com

Nicholas Farnden

780.938.7343

nfarnden@cresa.com

10020 - 101A Avenue NW, Suite 1980 | Edmonton, AB T5J 3G2 | 780.900.8781 cresa.com

Even though obtained from sources deemed reliable, no warranty or representation, express or implied, is made as to the accuracy of the information herein, and it is subject to errors, omissions, change of price, rental or other conditions, withdrawal without notice, and to any special listing conditions imposed by our principals.

cresa