



804 Heinz Ave

BERKELEY, CA 94710

Space Profile

Square Footage	35,000 SF
Premises	1st & 2nd Floor
Rental Rate	Contact Broker
Availability	Immediately
Sublease Term	Thru 4/30/2033 (Flexible)

Features

- Located in the Heart of Berkeley's Life Science Hub
- Mix of Office and Labs
- 350KW Generator
- High End Commercial Kitchen
- Extensive Lab Utility Infrastructure
- Fitness Center Onsite
- Walking Distance to Emery-Go-Round and Berkeley Bowl West

For more information:

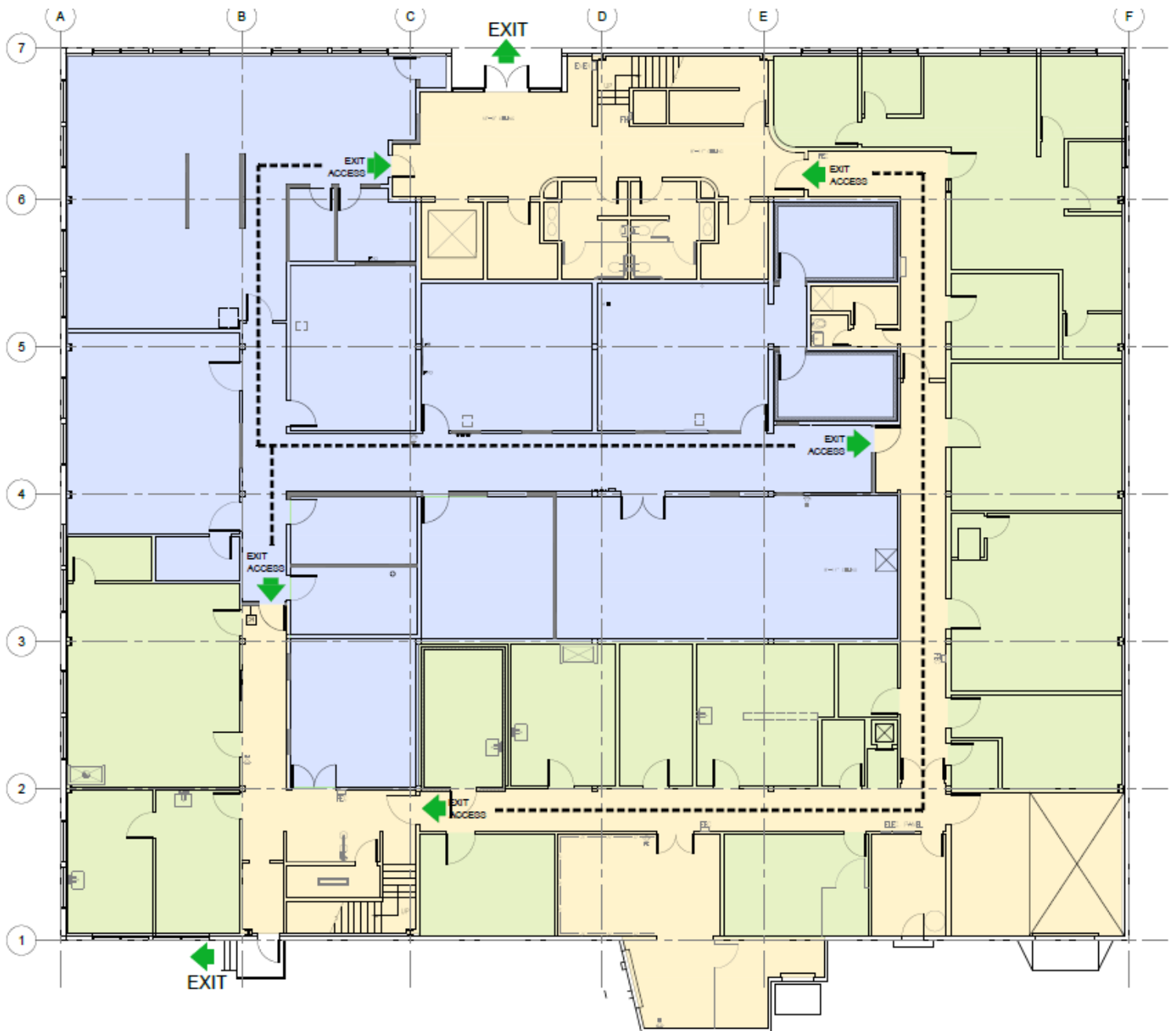
Stephen Carlson
scarlson@cresa.com
510.381.9901

Erik Carlson
ecarlson@cresa.com
425.736.9662



FLOOR PLAN

804 Heinz Ave | 1st Floor | 17,500 SF



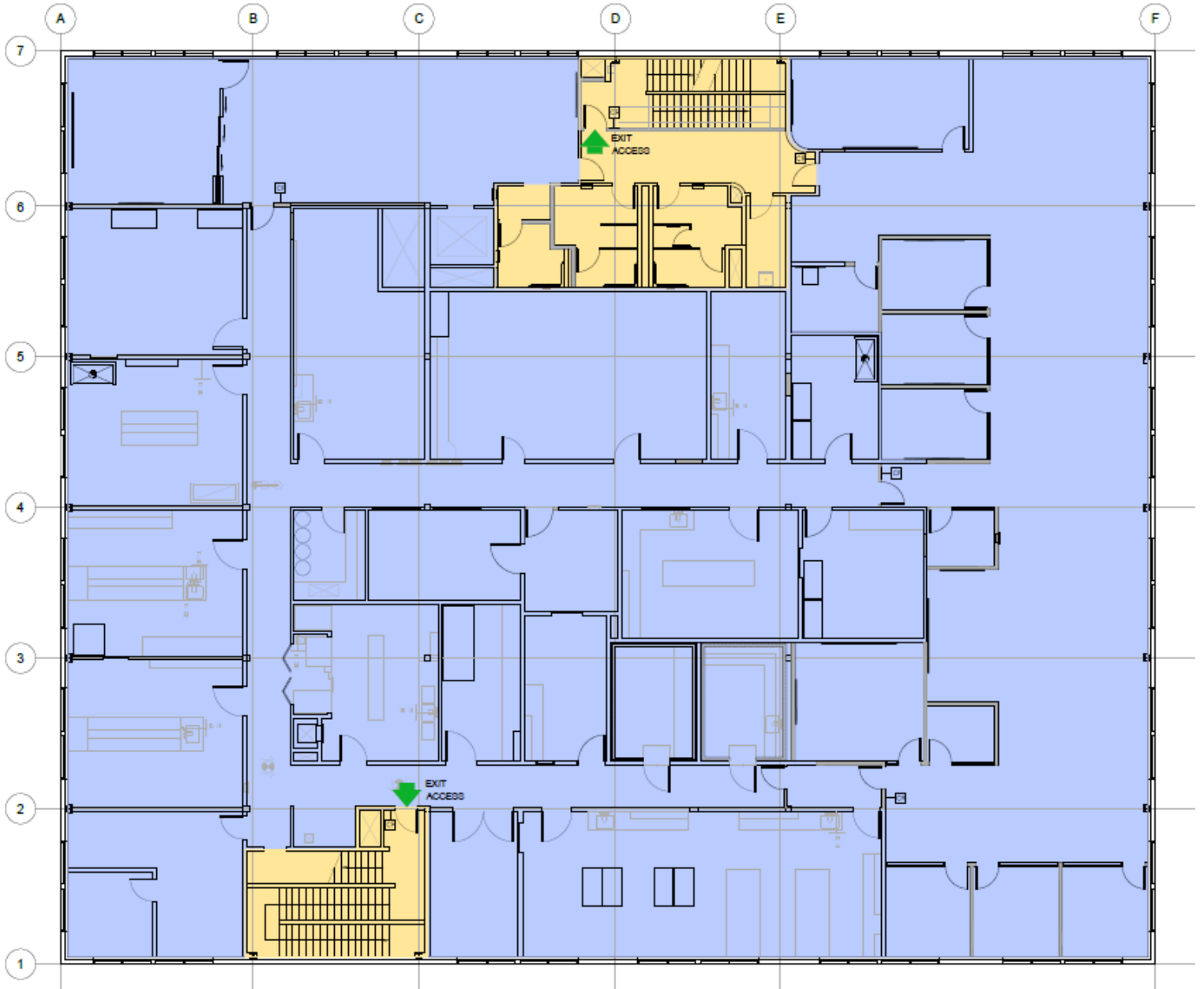
For more information:

Stephen Carlson
scarlson@cresa.com
510.381.9901

Erik Carlson
ecarlson@cresa.com
425.736.9662

FLOOR PLAN

804 Heinz Ave | 2nd Floor | 17,500 SF



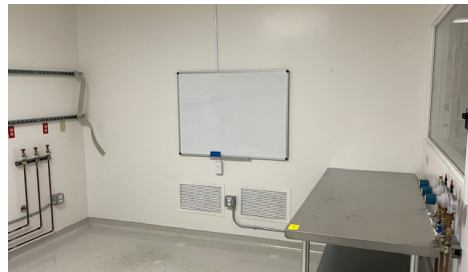
For more information:

Stephen Carlson
scarlson@cresa.com
510.381.9901

Erik Carlson
ecarlson@cresa.com
425.736.9662

PHOTOS

804 Heinz Ave | 1st & 2nd Floor | 35,000 SF



For more information:

Stephen Carlson
scarlson@cresa.com
510.381.9901

Erik Carlson
ecarlson@cresa.com
425.736.9662