

Sublease

Marina Village

1010 & 1020 Atlantic Avenue
Alameda, CA

Space Profile:

- Can be leased together or separately

1010 Atlantic Avenue Laboratory and offices

RSF	22,303
Rental Rate	Call for quote
Availability	120 days
Term	Through 1/31/2023

1020 Atlantic Avenue Offices only

RSF	8,492
Rental Rate	Call for quote
Availability	Immediately
Term	Through 1/31/2023

Property Features:

- Abundant free parking
- Fitness center
- BART shuttle
- Minutes to Downtown Oakland
- Steps away from future ferry terminal

Contact:

Matt Elmquist
510.851.2004
melmquist@cresa.com
BRE# 01230052

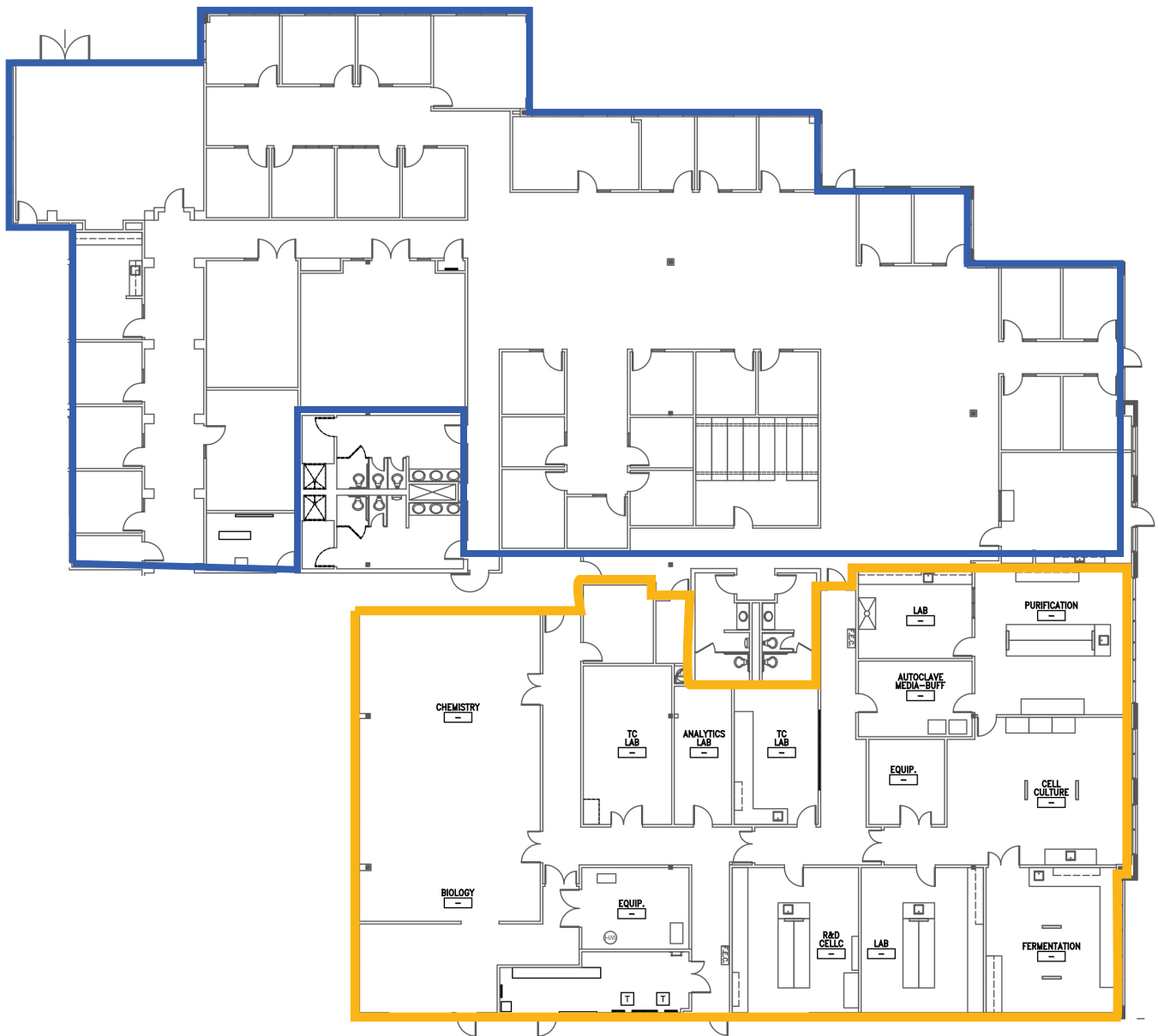
Dane Hooks
415.394.1022
dhooks@cresa.com
BRE# 01900402



Cresa © 2019. All rights reserved. The information contained in this document has been obtained from sources believed reliable. While Cresa does not doubt its accuracy, Cresa has not verified it and makes no guarantee, warranty, or representation about it. It is your responsibility to independently confirm its accuracy and completeness. Any projections, opinions, assumptions or estimates used are for example only and do not represent the current or future performance of the property. The value of this transaction to you depends on tax and other factors which should be evaluated by your tax, financial and legal advisors. You and your advisors should conduct a careful, independent investigation of the property to determine to your satisfaction the suitability of the property for your needs.

1010 Atlantic Avenue

Alameda, CA



1010 Atlantic Avenue | 22,303 RSF

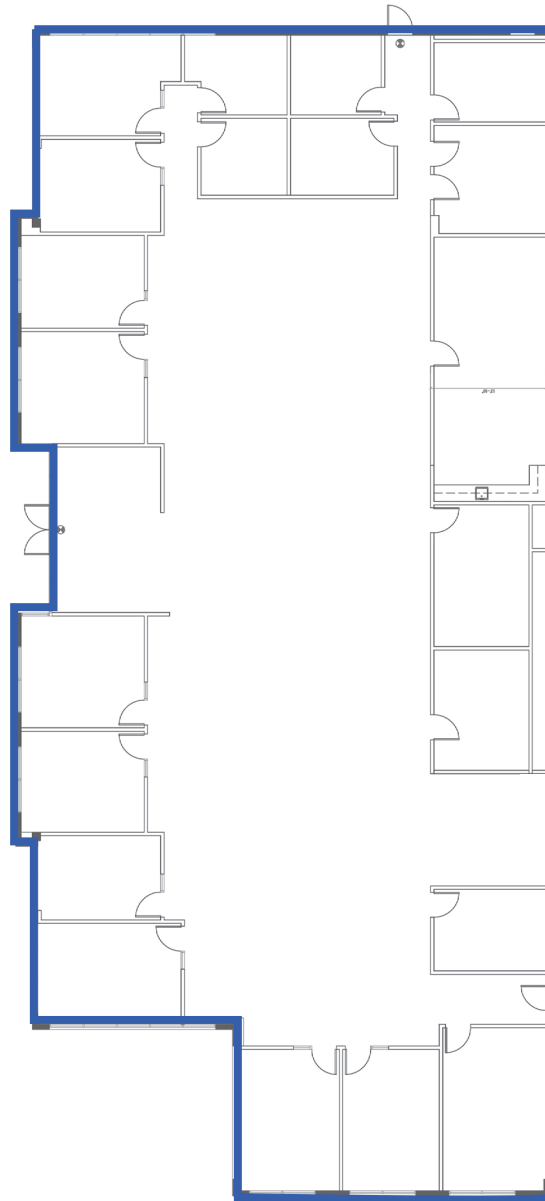
- Lab
- Office



Cresa © 2019. All rights reserved. The information contained in this document has been obtained from sources believed reliable. While Cresa does not doubt its accuracy, Cresa has not verified it and makes no guarantee, warranty, or representation about it. It is your responsibility to independently confirm its accuracy and completeness. Any projections, opinions, assumptions or estimates used are for example only and do not represent the current or future performance of the property. The value of this transaction to you depends on tax and other factors which should be evaluated by your tax, financial and legal advisors. You and your advisors should conduct a careful, independent investigation of the property to determine to your satisfaction the suitability of the property for your needs.

1020 Atlantic Avenue

Alameda, CA



1020 Atlantic Avenue | 8,492 RSF

☐ Office



Cresa © 2019. All rights reserved. The information contained in this document has been obtained from sources believed reliable. While Cresa does not doubt its accuracy, Cresa has not verified it and makes no guarantee, warranty, or representation about it. It is your responsibility to independently confirm its accuracy and completeness. Any projections, opinions, assumptions or estimates used are for example only and do not represent the current or future performance of the property. The value of this transaction to you depends on tax and other factors which should be evaluated by your tax, financial and legal advisors. You and your advisors should conduct a careful, independent investigation of the property to determine to your satisfaction the suitability of the property for your needs.