

# SUBLEASE

# 555 17th STREET

Denver, CO 80202



## Space Profile:

<b>Premises</b>	15th Floor (Divisible) 9,500 - 19,895 SF
<b>Lease Term</b>	Through Nov 30, 2031 (shorter terms considered)
<b>Lease Rate</b>	Negotiable
<b>FF&amp;E</b>	New Furniture, Fixtures, Equipment, Audio & Visual Available

## Features:

- Brand new Plug-N-Play Opportunity
- Full floor space
- On-site fitness center with showers & lockers
- Newly remodeled lobby
- Adjacent to Grand Hyatt Hotel
- Attached parking garage
- On-site conferencing facilities
- Tenant Lounge
- Snarf's & FedEx Office

**cresa** ::::

FOR MORE INFORMATION

**Rick Door**

303.548.1671 | [rdoor@cresa.com](mailto:rdoor@cresa.com)

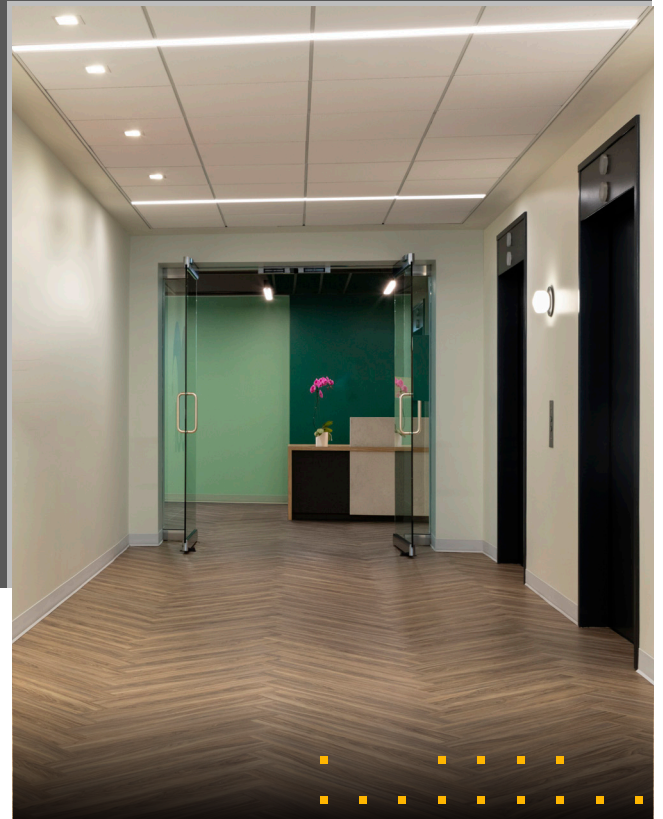
**Scott Churchley**

303.579.0311 | [schurchley@cresa.com](mailto:schurchley@cresa.com)

SUBLEASE

555 17th STREET

Denver, CO 80202



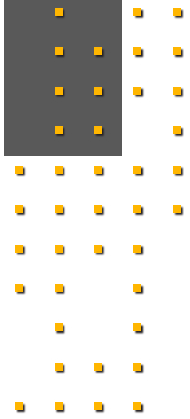
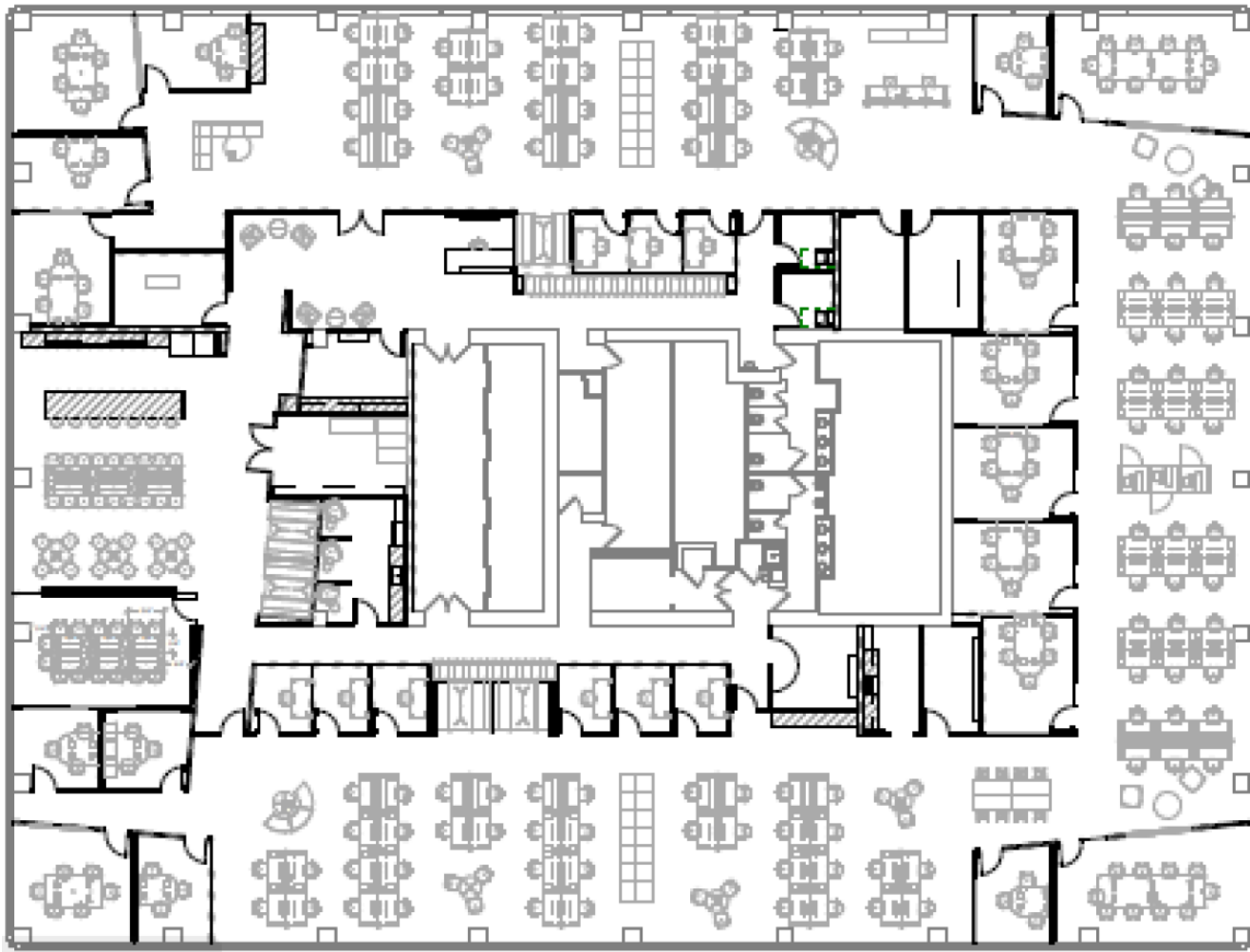
cresa

# SUBLEASE



# 555 17th STREET

Denver, CO 80202



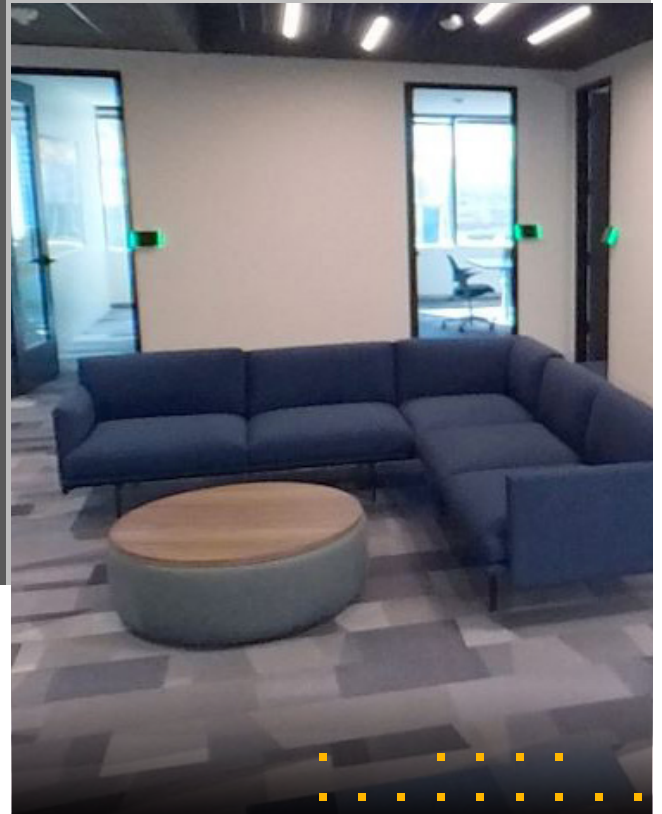
## 15th Floor | 19,895 Total RSF:

- 74 Existing Workstations with Room for up to 106
- 2 Large Conference Rooms
- 3 Medium Conference Rooms
- 9 Closed Huddle Rooms
- 9 Open Huddle Rooms
- Multiple Soft Seating Areas
- Café/Tenant Lounge
- 2nd Kitchen
- Mother's Room
- Reception
- "War Room"
- Private Phone Booths

**SUBLEASE**

**555 17th STREET**

Denver, CO 80202



**cresa**

FOR MORE INFORMATION

**Rick Door**

303.548.1671 | [rdoor@cresa.com](mailto:rdoor@cresa.com)

**Scott Churchley**

303.579.0311 | [schurchley@cresa.com](mailto:schurchley@cresa.com)